

Daily Summary for Amman Stock Exchange

VALUE TRADED (JD)

	2021	2022	NET CHANGE	CHANGE (%)
Daily	13,040,548	4,023,392	-9,017,156	-69.15%
Cumulative (1/8-31/8)	137,653,379	294,567,024	156,913,645	113.99%
Cumulative (2/1-31/8)	1,391,071,282	1,446,304,951	55,233,669	3.97%

NO. OF SHARES TRADED

	2021	2022	NET CHANGE	CHANGE (%)
Daily	7,065,279	2,670,441	-4,394,838	-62.20%
Cumulative (1/8-31/8)	102,462,938	134,212,717	31,749,779	30.99%
Cumulative (2/1-31/8)	1,092,319,236	812,128,223	-280,191,013	-25.65%

NO. OF TRANSACTIONS

	2021	2022	NET CHANGE	CHANGE (%)
Daily	3,408	2,050	-1,358	-39.85%
Cumulative (1/8-31/8)	62,244	76,351	14,107	22.66%
Cumulative (2/1-31/8)	544,020	529,943	-14,077	-2.59%

SOME FINANCIAL RATIOS FOR THE ASE (31/8/2022)

SECTOR	P/E	P/BV	DIVIDEND YIELD (%)	TURNOVER (%)
FINANCIAL	14.343	0.868	4.786	0.034
SERVICES	19.169	1.457	3.972	0.069
INDUSTRY	12.540	2.865	3.999	0.054
OVERALL	13.719	1.299	4.433	0.043

STOCK PRICE INDEX WEIGHTED BY FREE FLOAT MARKET CAPITALIZATION (1999=1000)

	TUESDAY 30/08/2022	WEDNESDAY 31/08/2022	% CHANGE	
			DAY BEFORE	YTD
GENERAL	2555.9	2547.0	-0.35%	20.22%
FINANCIAL	2679.5	2673.4	-0.22%	2.65%
SERVICES	1822.5	1807.7	-0.81%	36.18%
INDUSTRY	5701.8	5683.0	-0.33%	55.02%

STOCK PRICE INDEX WEIGHTED BY FREE FLOAT MARKET CAPITALIZATION ASE20 (2014=1000)

	1373.8	1369.1	-0.34%	27.43%
--	--------	--------	--------	--------

Total Return Index ASETR (2021=1074)

	1460.5	1455.4	-0.34%	35.47%
--	--------	--------	--------	--------

STOCK PRICE INDEX WEIGHTED BY MARKET CAPITALIZATION (1991=1000)

	TUESDAY 30/08/2022	WEDNESDAY 31/08/2022	% CHANGE	
			DAY BEFORE	YTD
GENERAL	4932.9	4913.2	-0.40%	22.67%
BANKS	6714.8	6692.0	-0.34%	1.91%
INSURANCE	1302.3	1304.3	0.15%	-1.81%
SERVICES	823.1	819.9	-0.39%	4.80%
INDUSTRY	7733.8	7697.4	-0.47%	63.76%

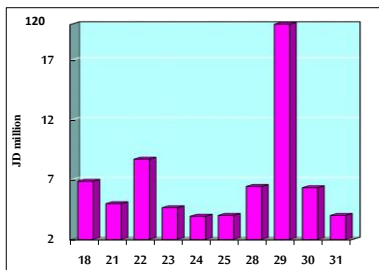
STOCK PRICE MARKET INDEX WEIGHTED BY FREE FLOAT MARKET CAP. (2012=1000)

	TUESDAY 30/08/2022	WEDNESDAY 31/08/2022	% CHANGE	
			DAY BEFORE	YTD
FIRST MARKET	1435.4	1430.2	-0.36%	24.92%
SECOND MARKET	809.1	808.1	-0.12%	-13.71%

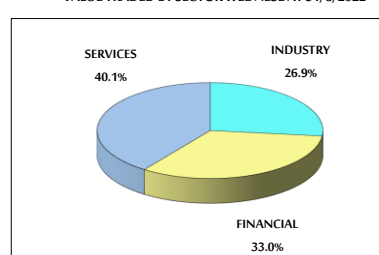
MARKET CAPITALIZATION (JD)

	18,895,388,332	18,819,693,495	-0.40%	21.45%
--	----------------	----------------	--------	--------

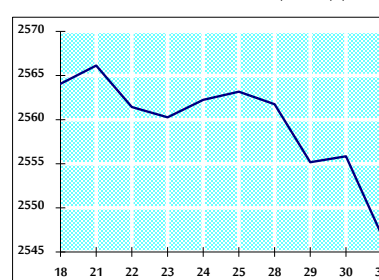
VALUE TRADED FROM 18/8 TO 31/8/2022



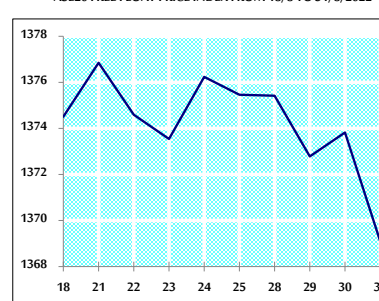
VALUE TRADED BY SECTOR WEDNESDAY 31/8/2022



GENERAL FREE FLOAT PRICE INDEX FROM 18/8 TO 31/8/2022



ASE20 FREE FLOAT PRICE INDEX FROM 18/8 TO 31/8/2022



GENERAL PRICE INDEX FROM 18/8 TO 31/8/2022

