

## Daily Summary for Amman Stock Exchange

### VALUE TRADED (JD)

	2021	2022	NET CHANGE	CHANGE (%)
Daily	8,330,488	4,426,748	-3,903,740	-46.86%
Cumulative (1/9-1/9)	8,330,488	4,426,748	-3,903,740	-46.86%
Cumulative (2/1-1/9)	1,399,401,770	1,450,731,699	51,329,929	3.67%

### NO. OF SHARES TRADED

	2021	2022	NET CHANGE	CHANGE (%)
Daily	4,829,982	2,849,426	-1,980,556	-41.01%
Cumulative (1/9-1/9)	4,829,982	2,849,426	-1,980,556	-41.01%
Cumulative (2/1-1/9)	1,097,149,218	814,977,649	-282,171,569	-25.72%

### NO. OF TRANSACTIONS

	2021	2022	NET CHANGE	CHANGE (%)
Daily	3,850	2,288	-1,562	-40.57%
Cumulative (1/9-1/9)	3,850	2,288	-1,562	-40.57%
Cumulative (2/1-1/9)	547,870	532,231	-15,639	-2.85%

### SOME FINANCIAL RATIOS FOR THE ASE (1/9/2022)

SECTOR	P/E	P/BV	DIVIDEND YIELD (%)	TURNOVER (%)
FINANCIAL	14.311	0.866	4.797	0.044
SERVICES	19.214	1.461	3.963	0.052
INDUSTRY	12.480	2.851	4.018	0.048
OVERALL	13.682	1.295	4.445	0.046

### STOCK PRICE INDEX WEIGHTED BY FREE FLOAT MARKET CAPITALIZATION (1999=1000)

	WEDNESDAY 31/08/2022	THURSDAY 01/09/2022	% CHANGE	
			DAY BEFORE	YTD
GENERAL	2547.0	2542.2	-0.19%	19.99%
FINANCIAL	2673.4	2667.0	-0.24%	2.40%
SERVICES	1807.7	1811.2	0.19%	36.44%
INDUSTRY	5683.0	5654.6	-0.50%	54.25%

### STOCK PRICE INDEX WEIGHTED BY FREE FLOAT MARKET CAPITALIZATION ASE20 (2014=1000)

	1369.1	1365.8	-0.24%	27.13%
--	--------	--------	--------	--------

### Total Return Index ASETR (2021=1074)

	1455.4	1452.0	-0.24%	35.15%
--	--------	--------	--------	--------

### STOCK PRICE INDEX WEIGHTED BY MARKET CAPITALIZATION (1991=1000)

	WEDNESDAY 31/08/2022	THURSDAY 01/09/2022	% CHANGE	
			DAY BEFORE	YTD
GENERAL	4913.2	4899.9	-0.27%	22.34%
BANKS	6692.0	6676.9	-0.23%	1.68%
INSURANCE	1304.3	1296.7	-0.58%	-2.39%
SERVICES	819.9	822.3	0.29%	5.11%
INDUSTRY	7697.4	7662.5	-0.45%	63.01%

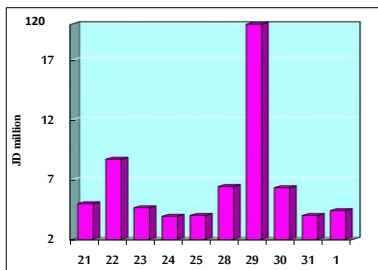
### STOCK PRICE MARKET INDEX WEIGHTED BY FREE FLOAT MARKET CAP. (2012=1000)

	WEDNESDAY 31/08/2022	THURSDAY 01/09/2022	% CHANGE	
			DAY BEFORE	YTD
FIRST MARKET	1430.2	1427.7	-0.18%	24.69%
SECOND MARKET	808.1	806.1	-0.25%	-13.93%

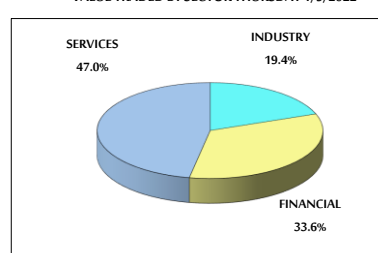
### MARKET CAPITALIZATION (JD)

	18,819,693,495	18,774,323,014	-0.24%	21.16%
--	----------------	----------------	--------	--------

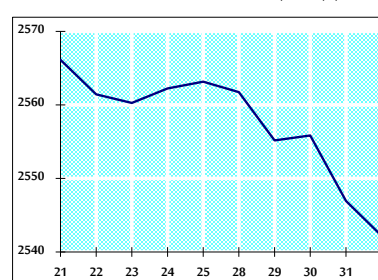
### VALUE TRADED FROM 21/8 TO 1/9/2022



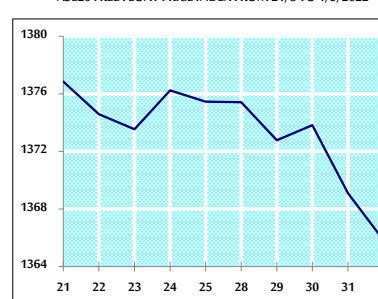
### VALUE TRADED BY SECTOR THURSDAY 1/9/2022



### GENERAL FREE FLOAT PRICE INDEX FROM 21/8 TO 1/9/2022



### ASE20 FREE FLOAT PRICE INDEX FROM 21/8 TO 1/9/2022



### GENERAL PRICE INDEX FROM 21/8 TO 1/9/2022

