

Daily Summary for Amman Stock Exchange

VALUE TRADED (JD)

	2021	2022	NET CHANGE	CHANGE (%)
Daily	6,786,185	3,750,719	-3,035,466	-44.73%
Cumulative (1/9-4/9)	15,116,673	8,177,467	-6,939,206	-45.90%
Cumulative (2/1-4/9)	1,406,187,955	1,454,482,418	48,294,463	3.43%

NO. OF SHARES TRADED

	2021	2022	NET CHANGE	CHANGE (%)
Daily	7,913,873	2,401,656	-5,512,217	-69.65%
Cumulative (1/9-4/9)	12,743,855	5,251,082	-7,492,773	-58.80%
Cumulative (2/1-4/9)	1,105,063,091	817,379,305	-287,683,786	-26.03%

NO. OF TRANSACTIONS

	2021	2022	NET CHANGE	CHANGE (%)
Daily	3,797	2,097	-1,700	-44.77%
Cumulative (1/9-4/9)	7,647	4,385	-3,262	-42.66%
Cumulative (2/1-4/9)	551,667	534,328	-17,339	-3.14%

SOME FINANCIAL RATIOS FOR THE ASE (4/9/2022)

SECTOR	P/E	P/BV	DIVIDEND YIELD (%)	TURNOVER (%)
FINANCIAL	14.299	0.862	4.813	0.039
SERVICES	19.101	1.452	3.986	0.043
INDUSTRY	12.394	2.831	4.046	0.031
OVERALL	13.607	1.288	4.469	0.039

STOCK PRICE INDEX WEIGHTED BY FREE FLOAT MARKET CAPITALIZATION (1999=1000)

	THURSDAY 01/09/2022	SUNDAY 04/09/2022	% CHANGE	
			DAY BEFORE	YTD
GENERAL	2542.2	2528.0	-0.56%	19.32%
FINANCIAL	2667.0	2656.8	-0.39%	2.01%
SERVICES	1811.2	1798.2	-0.72%	35.46%
INDUSTRY	5654.6	5608.6	-0.81%	52.99%

STOCK PRICE INDEX WEIGHTED BY FREE FLOAT MARKET CAPITALIZATION ASE20 (2014=1000)

	1365.8	1357.8	-0.59%	26.38%
--	--------	--------	--------	--------

Total Return Index ASETR (2021=1074)

	1452.0	1443.4	-0.59%	34.35%
--	--------	--------	--------	--------

STOCK PRICE INDEX WEIGHTED BY MARKET CAPITALIZATION (1991=1000)

	THURSDAY 01/09/2022	SUNDAY 04/09/2022	% CHANGE	
			DAY BEFORE	YTD
GENERAL	4899.9	4873.2	-0.54%	21.67%
BANKS	6676.9	6652.7	-0.36%	1.31%
INSURANCE	1296.7	1304.0	0.57%	-1.83%
SERVICES	822.3	815.9	-0.78%	4.29%
INDUSTRY	7662.5	7608.9	-0.70%	61.87%

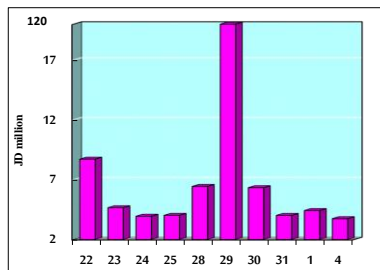
STOCK PRICE MARKET INDEX WEIGHTED BY FREE FLOAT MARKET CAP. (2012=1000)

	THURSDAY 01/09/2022	SUNDAY 04/09/2022	% CHANGE	
			DAY BEFORE	YTD
FIRST MARKET	1427.7	1420.2	-0.52%	24.04%
SECOND MARKET	806.1	799.3	-0.84%	-14.65%

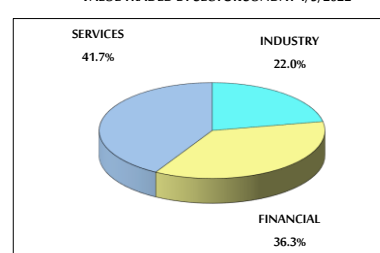
MARKET CAPITALIZATION (JD)

	18,774,323,014	18,676,433,401	-0.52%	20.53%
--	----------------	----------------	--------	--------

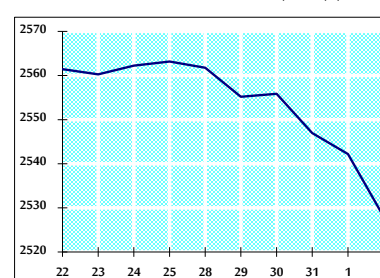
VALUE TRADED FROM 22/8 TO 4/9/2022



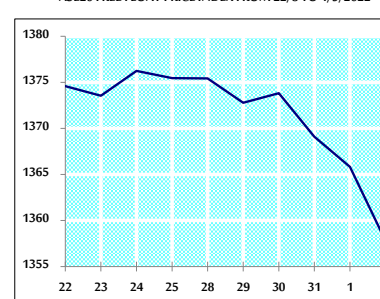
VALUE TRADED BY SECTOR SUNDAY 4/9/2022



GENERAL FREE FLOAT PRICE INDEX FROM 22/8 TO 4/9/2022



ASE20 FREE FLOAT PRICE INDEX FROM 22/8 TO 4/9/2022



GENERAL PRICE INDEX FROM 22/8 TO 4/9/2022

