

Daily Summary for Amman Stock Exchange

VALUE TRADED (JD)

	2021	2022	NET CHANGE	CHANGE (%)
Daily	5,883,205	3,621,244	-2,261,961	-38.45%
Cumulative (1/9-5/9)	20,999,878	11,798,711	-9,201,167	-43.82%
Cumulative (2/1-5/9)	1,412,071,160	1,458,103,662	46,032,502	3.26%

NO. OF SHARES TRADED

	2021	2022	NET CHANGE	CHANGE (%)
Daily	5,335,621	2,590,287	-2,745,334	-51.45%
Cumulative (1/9-5/9)	18,079,476	7,841,369	-10,238,107	-56.63%
Cumulative (2/1-5/9)	1,110,398,712	819,969,592	-290,429,120	-26.16%

NO. OF TRANSACTIONS

	2021	2022	NET CHANGE	CHANGE (%)
Daily	3,262	1,987	-1,275	-39.09%
Cumulative (1/9-5/9)	10,909	6,372	-4,537	-41.59%
Cumulative (2/1-5/9)	554,929	536,315	-18,614	-3.35%

SOME FINANCIAL RATIOS FOR THE ASE (5/9/2022)

SECTOR	P/E	P/BV	DIVIDEND YIELD (%)	TURNOVER (%)
FINANCIAL	14.260	0.860	4.826	0.022
SERVICES	18.981	1.443	4.011	0.044
INDUSTRY	12.344	2.819	4.063	0.164
OVERALL	13.556	1.283	4.486	0.042

STOCK PRICE INDEX WEIGHTED BY FREE FLOAT MARKET CAPITALIZATION (1999=1000)

	SUNDAY 04/09/2022	MONDAY 05/09/2022	% CHANGE	
			DAY BEFORE	YTD
GENERAL	2528.0	2514.0	-0.55%	18.66%
FINANCIAL	2656.8	2648.2	-0.32%	1.68%
SERVICES	1798.2	1779.6	-1.03%	34.06%
INDUSTRY	5608.6	5577.3	-0.56%	52.14%

STOCK PRICE INDEX WEIGHTED BY FREE FLOAT MARKET CAPITALIZATION ASE20 (2014=1000)

	1357.8	1351.4	-0.47%	25.79%
--	--------	--------	--------	--------

Total Return Index ASETR (2021=1074)

	1443.4	1436.6	-0.47%	33.72%
--	--------	--------	--------	--------

STOCK PRICE INDEX WEIGHTED BY MARKET CAPITALIZATION (1991=1000)

	SUNDAY 04/09/2022	MONDAY 05/09/2022	% CHANGE	
			DAY BEFORE	YTD
GENERAL	4873.2	4854.7	-0.38%	21.21%
BANKS	6652.7	6637.9	-0.22%	1.09%
INSURANCE	1304.0	1305.0	0.08%	-1.76%
SERVICES	815.9	812.1	-0.47%	3.80%
INDUSTRY	7608.9	7568.7	-0.53%	61.02%

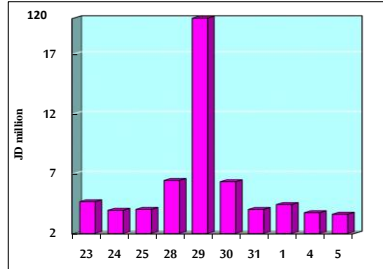
STOCK PRICE MARKET INDEX WEIGHTED BY FREE FLOAT MARKET CAP. (2012=1000)

	SUNDAY 04/09/2022	MONDAY 05/09/2022	% CHANGE	
			DAY BEFORE	YTD
FIRST MARKET	1420.2	1412.6	-0.54%	23.38%
SECOND MARKET	799.3	794.7	-0.58%	-15.15%

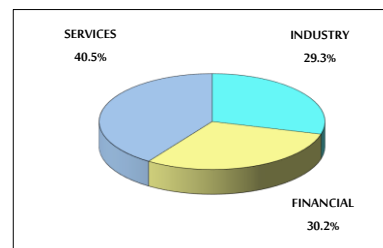
MARKET CAPITALIZATION (JD)

	18,676,433,401	18,607,711,782	-0.37%	20.08%
--	----------------	----------------	--------	--------

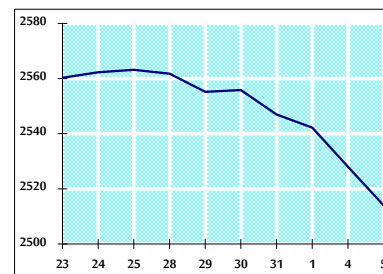
VALUE TRADED FROM 23/8 TO 5/9/2022



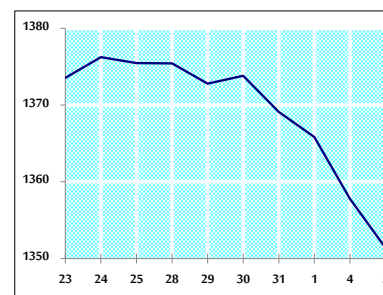
VALUE TRADED BY SECTOR MONDAY 5/9/2022



GENERAL FREE FLOAT PRICE INDEX FROM 23/8 TO 5/9/2022



ASE20 FREE FLOAT PRICE INDEX FROM 23/8 TO 5/9/2022



GENERAL PRICE INDEX FROM 23/8 TO 5/9/2022

