

Daily Summary for Amman Stock Exchange

VALUE TRADED (JD)

	2021	2022	NET CHANGE	CHANGE (%)
Daily	5,877,883	4,229,556	-1,648,327	-28.04%
Cumulative (1/9-6/9)	26,877,761	16,028,267	-10,849,494	-40.37%
Cumulative (2/1-6/9)	1,417,949,043	1,462,333,218	44,384,175	3.13%

NO. OF SHARES TRADED

	2021	2022	NET CHANGE	CHANGE (%)
Daily	5,401,563	2,363,822	-3,037,741	-56.24%
Cumulative (1/9-6/9)	23,481,039	10,205,191	-13,275,848	-56.54%
Cumulative (2/1-6/9)	1,115,800,275	822,333,414	-293,466,861	-26.30%

NO. OF TRANSACTIONS

	2021	2022	NET CHANGE	CHANGE (%)
Daily	3,461	2,533	-928	-26.81%
Cumulative (1/9-6/9)	14,370	8,905	-5,465	-38.03%
Cumulative (2/1-6/9)	558,390	538,848	-19,542	-3.50%

SOME FINANCIAL RATIOS FOR THE ASE (6/9/2022)

SECTOR	P/E	P/BV	DIVIDEND YIELD (%)	TURNOVER (%)
FINANCIAL	14.218	0.857	4.840	0.026
SERVICES	18.883	1.435	4.032	0.078
INDUSTRY	12.294	2.808	4.079	0.039
OVERALL	13.504	1.278	4.503	0.038

STOCK PRICE INDEX WEIGHTED BY FREE FLOAT MARKET CAPITALIZATION (1999=1000)

	MONDAY 05/09/2022	TUESDAY 06/09/2022	% CHANGE	
			DAY BEFORE	YTD
GENERAL	2514.0	2500.8	-0.52%	18.04%
FINANCIAL	2648.2	2640.6	-0.29%	1.39%
SERVICES	1779.6	1762.1	-0.98%	32.75%
INDUSTRY	5577.3	5548.3	-0.52%	51.35%

STOCK PRICE INDEX WEIGHTED BY FREE FLOAT MARKET CAPITALIZATION ASE20 (2014=1000)

	1351.4	1343.9	-0.55%	25.09%
--	--------	--------	--------	--------

Total Return Index ASETR (2021=1074)

	1436.6	1428.7	-0.55%	32.98%
--	--------	--------	--------	--------

STOCK PRICE INDEX WEIGHTED BY MARKET CAPITALIZATION (1991=1000)

	MONDAY 05/09/2022	TUESDAY 06/09/2022	% CHANGE	
			DAY BEFORE	YTD
GENERAL	4854.7	4836.2	-0.38%	20.75%
BANKS	6637.9	6617.0	-0.31%	0.77%
INSURANCE	1305.0	1299.5	-0.42%	-2.17%
SERVICES	812.1	809.8	-0.28%	3.50%
INDUSTRY	7568.7	7532.9	-0.47%	60.26%

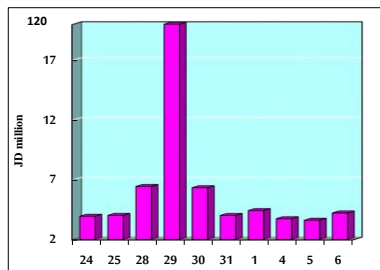
STOCK PRICE MARKET INDEX WEIGHTED BY FREE FLOAT MARKET CAP. (2012=1000)

	MONDAY 05/09/2022	TUESDAY 06/09/2022	% CHANGE	
			DAY BEFORE	YTD
FIRST MARKET	1412.6	1405.2	-0.53%	22.73%
SECOND MARKET	794.7	791.5	-0.40%	-15.49%

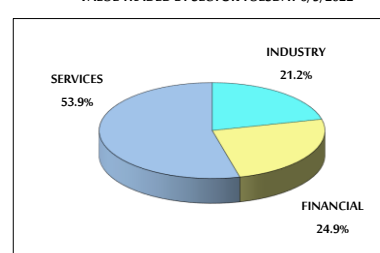
MARKET CAPITALIZATION (JD)

	18,607,711,782	18,540,516,110	-0.36%	19.65%
--	----------------	----------------	--------	--------

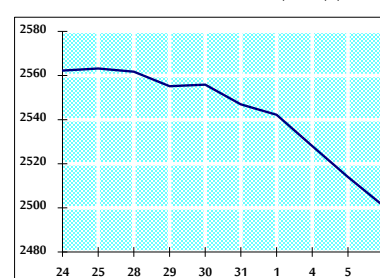
VALUE TRADED FROM 24/8 TO 6/9/2022



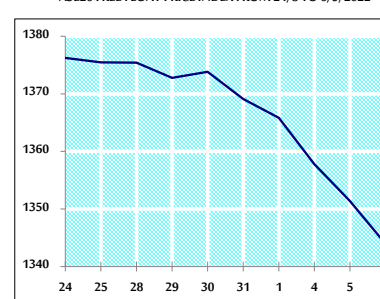
VALUE TRADED BY SECTOR TUESDAY 6/9/2022



GENERAL FREE FLOAT PRICE INDEX FROM 24/8 TO 6/9/2022



ASE20 FREE FLOAT PRICE INDEX FROM 24/8 TO 6/9/2022



GENERAL PRICE INDEX FROM 24/8 TO 6/9/2022

