

Daily Summary for Amman Stock Exchange

VALUE TRADED (JD)

	2021	2022	NET CHANGE	CHANGE (%)
Daily	5,611,462	6,310,447	698,985	12.46%
Cumulative (1/9-7/9)	32,489,223	22,338,714	-10,150,509	-31.24%
Cumulative (2/1-7/9)	1,423,560,505	1,468,643,665	45,083,160	3.17%

NO. OF SHARES TRADED

	2021	2022	NET CHANGE	CHANGE (%)
Daily	4,509,894	4,217,831	-292,063	-6.48%
Cumulative (1/9-7/9)	27,990,933	14,423,022	-13,567,911	-48.47%
Cumulative (2/1-7/9)	1,120,310,169	826,551,245	-293,758,924	-26.22%

NO. OF TRANSACTIONS

	2021	2022	NET CHANGE	CHANGE (%)
Daily	3,108	3,106	-2	-0.06%
Cumulative (1/9-7/9)	17,478	12,011	-5,467	-31.28%
Cumulative (2/1-7/9)	561,498	541,954	-19,544	-3.48%

SOME FINANCIAL RATIOS FOR THE ASE (7/9/2022)

SECTOR	P/E	P/BV	DIVIDEND YIELD (%)	TURNOVER (%)
FINANCIAL	14.184	0.855	4.852	0.052
SERVICES	18.573	1.412	4.099	0.148
INDUSTRY	12.233	2.794	4.100	0.021
OVERALL	13.429	1.271	4.528	0.068

STOCK PRICE INDEX WEIGHTED BY FREE FLOAT MARKET CAPITALIZATION (1999=1000)

	TUESDAY 06/09/2022	WEDNESDAY 07/09/2022	% CHANGE	
			DAY BEFORE	YTD
GENERAL	2500.8	2480.2	-0.82%	17.07%
FINANCIAL	2640.6	2631.5	-0.34%	1.04%
SERVICES	1762.1	1727.0	-1.99%	30.10%
INDUSTRY	5548.3	5516.4	-0.57%	50.48%

STOCK PRICE INDEX WEIGHTED BY FREE FLOAT MARKET CAPITALIZATION ASE20 (2014=1000)

	1343.9	1332.2	-0.88%	24.00%
--	--------	--------	--------	--------

Total Return Index ASETR (2021=1074)

	1428.7	1416.2	-0.88%	31.81%
--	--------	--------	--------	--------

STOCK PRICE INDEX WEIGHTED BY MARKET CAPITALIZATION (1991=1000)

	TUESDAY 06/09/2022	WEDNESDAY 07/09/2022	% CHANGE	
			DAY BEFORE	YTD
GENERAL	4836.2	4809.0	-0.56%	20.07%
BANKS	6617.0	6589.6	-0.41%	0.35%
INSURANCE	1299.5	1301.3	0.14%	-2.03%
SERVICES	809.8	807.0	-0.34%	3.15%
INDUSTRY	7532.9	7473.3	-0.79%	58.99%

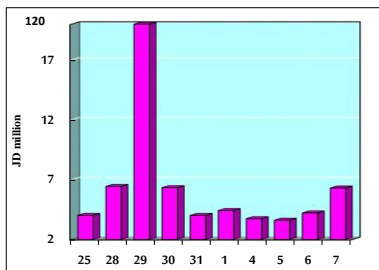
STOCK PRICE MARKET INDEX WEIGHTED BY FREE FLOAT MARKET CAP. (2012=1000)

	TUESDAY 06/09/2022	WEDNESDAY 07/09/2022	% CHANGE	
			DAY BEFORE	YTD
FIRST MARKET	1405.2	1392.8	-0.88%	21.65%
SECOND MARKET	791.5	793.2	0.21%	-15.31%

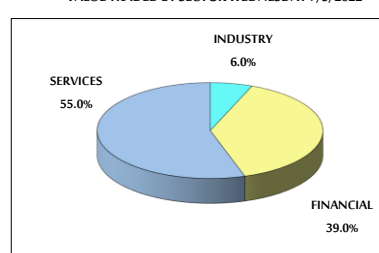
MARKET CAPITALIZATION (JD)

	18,540,516,110	18,442,550,921	-0.53%	19.02%
--	----------------	----------------	--------	--------

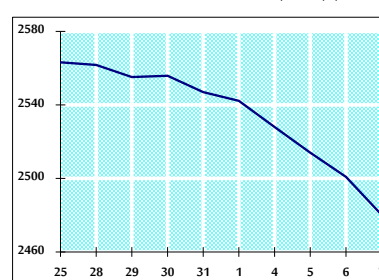
VALUE TRADED FROM 25/8 TO 7/9/2022



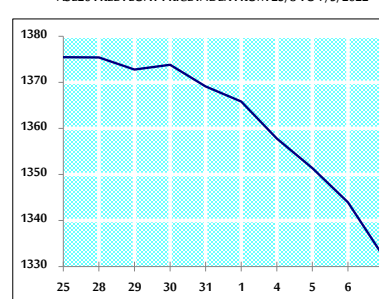
VALUE TRADED BY SECTOR WEDNESDAY 7/9/2022



GENERAL FREE FLOAT PRICE INDEX FROM 25/8 TO 7/9/2022



ASE20 FREE FLOAT PRICE INDEX FROM 25/8 TO 7/9/2022



GENERAL PRICE INDEX FROM 25/8 TO 7/9/2022

