

## Daily Summary for Amman Stock Exchange

### VALUE TRADED (JD)

	2021	2022	NET CHANGE	CHANGE (%)
Daily	4,887,123	9,243,121	4,355,998	89.13%
Cumulative (1/9-8/9)	37,376,346	31,581,835	-5,794,511	-15.50%
Cumulative (2/1-8/9)	1,428,447,628	1,477,886,786	49,439,158	3.46%

### NO. OF SHARES TRADED

	2021	2022	NET CHANGE	CHANGE (%)
Daily	4,191,822	5,517,611	1,325,789	31.63%
Cumulative (1/9-8/9)	32,182,755	19,940,633	-12,242,122	-38.04%
Cumulative (2/1-8/9)	1,124,501,991	832,068,856	-292,433,135	-26.01%

### NO. OF TRANSACTIONS

	2021	2022	NET CHANGE	CHANGE (%)
Daily	2,918	3,381	463	15.87%
Cumulative (1/9-8/9)	20,396	15,392	-5,004	-24.53%
Cumulative (2/1-8/9)	564,416	545,335	-19,081	-3.38%

### SOME FINANCIAL RATIOS FOR THE ASE (8/9/2022)

SECTOR	P/E	P/BV	DIVIDEND YIELD (%)	TURNOVER (%)
FINANCIAL	14.258	0.860	4.826	0.095
SERVICES	18.683	1.420	4.075	0.103
INDUSTRY	12.206	2.788	4.109	0.023
OVERALL	13.464	1.275	4.517	0.089

### STOCK PRICE INDEX WEIGHTED BY FREE FLOAT MARKET CAPITALIZATION (1999=1000)

	WEDNESDAY 07/09/2022	THURSDAY 08/09/2022	% CHANGE	
			DAY BEFORE	YTD
GENERAL	2480.2	2487.9	0.31%	17.43%
FINANCIAL	2631.5	2635.8	0.16%	1.20%
SERVICES	1727.0	1743.6	0.96%	31.35%
INDUSTRY	5516.4	5504.8	-0.21%	50.16%

### STOCK PRICE INDEX WEIGHTED BY FREE FLOAT MARKET CAPITALIZATION ASE20 (2014=1000)

	1332.2	1335.8	0.27%	24.33%
--	--------	--------	-------	--------

### Total Return Index ASETR (2021=1074)

	1416.2	1420.0	0.27%	32.17%
--	--------	--------	-------	--------

### STOCK PRICE INDEX WEIGHTED BY MARKET CAPITALIZATION (1991=1000)

	WEDNESDAY 07/09/2022	THURSDAY 08/09/2022	% CHANGE	
			DAY BEFORE	YTD
GENERAL	4809.0	4821.4	0.26%	20.38%
BANKS	6589.6	6625.6	0.55%	0.90%
INSURANCE	1301.3	1298.7	-0.20%	-2.23%
SERVICES	807.0	811.5	0.56%	3.73%
INDUSTRY	7473.3	7465.3	-0.11%	58.82%

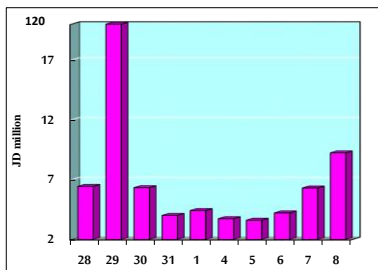
### STOCK PRICE MARKET INDEX WEIGHTED BY FREE FLOAT MARKET CAP. (2012=1000)

	WEDNESDAY 07/09/2022	THURSDAY 08/09/2022	% CHANGE	
			DAY BEFORE	YTD
FIRST MARKET	1392.8	1396.4	0.26%	21.96%
SECOND MARKET	793.2	797.1	0.50%	-14.89%

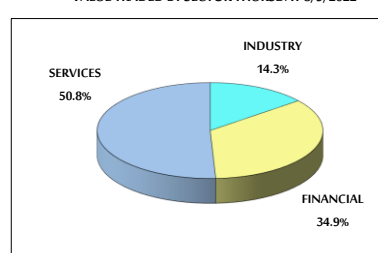
### MARKET CAPITALIZATION (JD)

	18,442,550,921	18,486,548,793	0.24%	19.30%
--	----------------	----------------	-------	--------

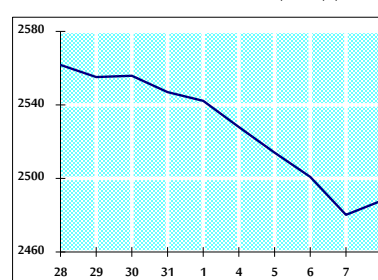
### VALUE TRADED FROM 28/8 TO 8/9/2022



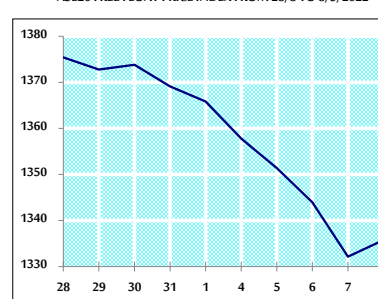
### VALUE TRADED BY SECTOR THURSDAY 8/9/2022



### GENERAL FREE FLOAT PRICE INDEX FROM 28/8 TO 8/9/2022



### ASE20 FREE FLOAT PRICE INDEX FROM 28/8 TO 8/9/2022



### GENERAL PRICE INDEX FROM 28/8 TO 8/9/2022

