

Daily Summary for Amman Stock Exchange

VALUE TRADED (JD)

	2021	2022	NET CHANGE	CHANGE (%)
Daily	6,375,745	3,106,419	-3,269,326	-51.28%
Cumulative (1/9-12/9)	55,418,418	37,975,913	-17,442,505	-31.47%
Cumulative (2/1-12/9)	1,446,489,700	1,484,280,864	37,791,164	2.61%

NO. OF SHARES TRADED

	2021	2022	NET CHANGE	CHANGE (%)
Daily	5,120,890	2,070,446	-3,050,444	-59.57%
Cumulative (1/9-12/9)	46,726,437	24,429,474	-22,296,963	-47.72%
Cumulative (2/1-12/9)	1,139,045,673	836,557,697	-302,487,976	-26.56%

NO. OF TRANSACTIONS

	2021	2022	NET CHANGE	CHANGE (%)
Daily	3,218	1,753	-1,465	-45.53%
Cumulative (1/9-12/9)	28,190	19,294	-8,896	-31.56%
Cumulative (2/1-12/9)	572,210	549,237	-22,973	-4.01%

SOME FINANCIAL RATIOS FOR THE ASE (12/9/2022)

SECTOR	P/E	P/BV	DIVIDEND YIELD (%)	TURNOVER (%)
FINANCIAL	14.239	0.859	4.833	0.019
SERVICES	18.617	1.415	4.090	0.090
INDUSTRY	12.320	2.814	4.071	0.017
OVERALL	13.499	1.278	4.505	0.033

STOCK PRICE INDEX WEIGHTED BY FREE FLOAT MARKET CAPITALIZATION (1999=1000)

	SUNDAY 11/09/2022	MONDAY 12/09/2022	% CHANGE	
			DAY BEFORE	YTD
GENERAL	2497.7	2494.5	-0.13%	17.74%
FINANCIAL	2647.3	2645.0	-0.08%	1.56%
SERVICES	1746.0	1734.3	-0.67%	30.65%
INDUSTRY	5534.4	5560.7	0.48%	51.69%

STOCK PRICE INDEX WEIGHTED BY FREE FLOAT MARKET CAPITALIZATION ASE20 (2014=1000)

	1342.7	1340.4	-0.18%	24.76%
--	--------	--------	--------	--------

Total Return Index ASETR (2021=1074)

	1427.4	1424.9	-0.18%	32.63%
--	--------	--------	--------	--------

STOCK PRICE INDEX WEIGHTED BY MARKET CAPITALIZATION (1991=1000)

	SUNDAY 11/09/2022	MONDAY 12/09/2022	% CHANGE	
			DAY BEFORE	YTD
GENERAL	4832.0	4833.8	0.04%	20.69%
BANKS	6629.4	6614.9	-0.22%	0.74%
INSURANCE	1296.7	1303.0	0.49%	-1.91%
SERVICES	811.0	810.8	-0.02%	3.64%
INDUSTRY	7501.2	7523.8	0.30%	60.06%

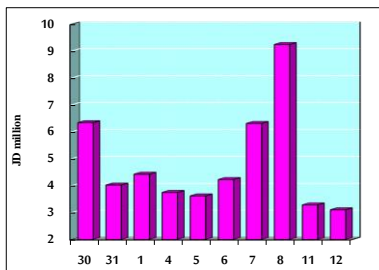
STOCK PRICE MARKET INDEX WEIGHTED BY FREE FLOAT MARKET CAP. (2012=1000)

	SUNDAY 11/09/2022	MONDAY 12/09/2022	% CHANGE	
			DAY BEFORE	YTD
FIRST MARKET	1403.1	1401.2	-0.14%	22.38%
SECOND MARKET	795.0	794.1	-0.11%	-15.21%

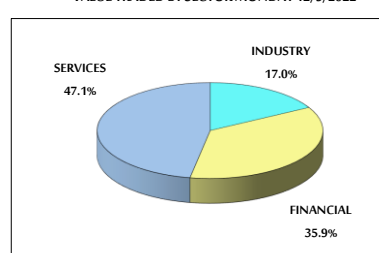
MARKET CAPITALIZATION (JD)

	18,525,469,975	18,532,224,138	0.04%	19.60%
--	----------------	----------------	-------	--------

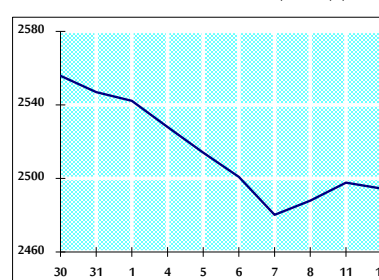
VALUE TRADED FROM 30/8 TO 12/9/2022



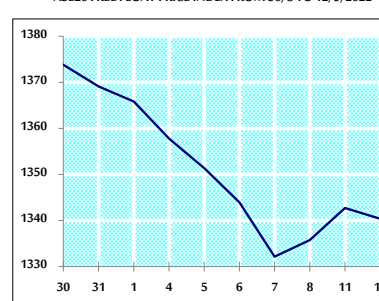
VALUE TRADED BY SECTOR MONDAY 12/9/2022



GENERAL FREE FLOAT PRICE INDEX FROM 30/8 TO 12/9/2022



ASE20 FREE FLOAT PRICE INDEX FROM 30/8 TO 12/9/2022



GENERAL PRICE INDEX FROM 30/8 TO 12/9/2022

