

Daily Summary for Amman Stock Exchange

VALUE TRADED (JD)

	2021	2022	NET CHANGE	CHANGE (%)
Daily	4,380,280	5,312,380	932,100	21.28%
Cumulative (1/9-13/9)	59,798,698	43,288,293	-16,510,405	-27.61%
Cumulative (2/1-13/9)	1,450,869,980	1,489,593,244	38,723,264	2.67%

NO. OF SHARES TRADED

	2021	2022	NET CHANGE	CHANGE (%)
Daily	3,624,969	3,700,791	75,822	2.09%
Cumulative (1/9-13/9)	50,351,406	28,130,265	-22,221,141	-44.13%
Cumulative (2/1-13/9)	1,142,670,642	840,258,488	-302,412,154	-26.47%

NO. OF TRANSACTIONS

	2021	2022	NET CHANGE	CHANGE (%)
Daily	2,709	2,218	-491	-18.12%
Cumulative (1/9-13/9)	30,899	21,512	-9,387	-30.38%
Cumulative (2/1-13/9)	574,919	551,455	-23,464	-4.08%

SOME FINANCIAL RATIOS FOR THE ASE (13/9/2022)

SECTOR	P/E	P/BV	DIVIDEND YIELD (%)	TURNOVER (%)
FINANCIAL	14.263	0.860	4.825	0.057
SERVICES	18.743	1.425	4.062	0.067
INDUSTRY	12.323	2.815	4.070	0.063
OVERALL	13.523	1.280	4.497	0.060

STOCK PRICE INDEX WEIGHTED BY FREE FLOAT MARKET CAPITALIZATION (1999=1000)

	MONDAY 12/09/2022	TUESDAY 13/09/2022	% CHANGE	
			DAY BEFORE	YTD
GENERAL	2494.5	2504.3	0.39%	18.20%
FINANCIAL	2645.0	2653.6	0.32%	1.89%
SERVICES	1734.3	1747.7	0.77%	31.66%
INDUSTRY	5560.7	5562.2	0.03%	51.73%

STOCK PRICE INDEX WEIGHTED BY FREE FLOAT MARKET CAPITALIZATION ASE20 (2014=1000)

	1340.4	1346.9	0.49%	25.37%
--	--------	--------	-------	--------

Total Return Index ASETR (2021=1074)

	1424.9	1431.9	0.49%	33.28%
--	--------	--------	-------	--------

STOCK PRICE INDEX WEIGHTED BY MARKET CAPITALIZATION (1991=1000)

	MONDAY 12/09/2022	TUESDAY 13/09/2022	% CHANGE	
			DAY BEFORE	YTD
GENERAL	4833.8	4842.5	0.18%	20.90%
BANKS	6614.9	6631.6	0.25%	0.99%
INSURANCE	1303.0	1295.4	-0.58%	-2.48%
SERVICES	810.8	818.2	0.91%	4.58%
INDUSTRY	7523.8	7519.0	-0.06%	59.96%

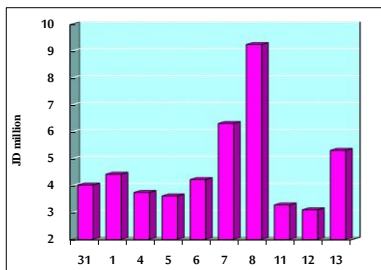
STOCK PRICE MARKET INDEX WEIGHTED BY FREE FLOAT MARKET CAP. (2012=1000)

	MONDAY 12/09/2022	TUESDAY 13/09/2022	% CHANGE	
			DAY BEFORE	YTD
FIRST MARKET	1401.2	1408.1	0.49%	22.99%
SECOND MARKET	794.1	793.0	-0.14%	-15.33%

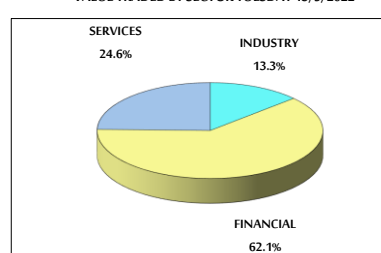
MARKET CAPITALIZATION (JD)

	18,532,224,138	18,565,450,532	0.18%	19.81%
--	----------------	----------------	-------	--------

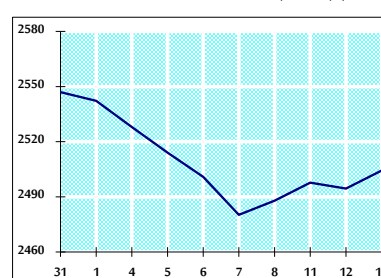
VALUE TRADED FROM 31/8 TO 13/9/2022



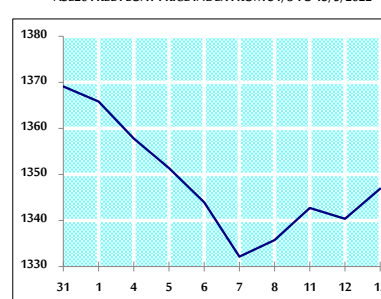
VALUE TRADED BY SECTOR TUESDAY 13/9/2022



GENERAL FREE FLOAT PRICE INDEX FROM 31/8 TO 13/9/2022



ASE20 FREE FLOAT PRICE INDEX FROM 31/8 TO 13/9/2022



GENERAL PRICE INDEX FROM 31/8 TO 13/9/2022

