

Daily Summary for Amman Stock Exchange

VALUE TRADED (JD)

	2021	2022	NET CHANGE	CHANGE (%)
Daily	5,075,258	4,377,029	-698,229	-13.76%
Cumulative (1/9-14/9)	64,873,956	47,665,322	-17,208,634	-26.53%
Cumulative (2/1-14/9)	1,455,945,238	1,493,970,273	38,025,035	2.61%

NO. OF SHARES TRADED

	2021	2022	NET CHANGE	CHANGE (%)
Daily	4,096,764	2,891,948	-1,204,816	-29.41%
Cumulative (1/9-14/9)	54,448,170	31,022,213	-23,425,957	-43.02%
Cumulative (2/1-14/9)	1,146,767,406	843,150,436	-303,616,970	-26.48%

NO. OF TRANSACTIONS

	2021	2022	NET CHANGE	CHANGE (%)
Daily	3,092	2,357	-735	-23.77%
Cumulative (1/9-14/9)	33,991	23,869	-10,122	-29.78%
Cumulative (2/1-14/9)	578,011	553,812	-24,199	-4.19%

SOME FINANCIAL RATIOS FOR THE ASE (14/9/2022)

SECTOR	P/E	P/BV	DIVIDEND YIELD (%)	TURNOVER (%)
FINANCIAL	14.255	0.860	4.828	0.048
SERVICES	18.636	1.417	4.085	0.055
INDUSTRY	12.286	2.806	4.082	0.020
OVERALL	13.492	1.277	4.507	0.047

STOCK PRICE INDEX WEIGHTED BY FREE FLOAT MARKET CAPITALIZATION (1999=1000)

	TUESDAY 13/09/2022	WEDNESDAY 14/09/2022	% CHANGE	
			DAY BEFORE	YTD
GENERAL	2504.3	2495.3	-0.36%	17.78%
FINANCIAL	2653.6	2647.6	-0.22%	1.66%
SERVICES	1747.7	1735.9	-0.67%	30.77%
INDUSTRY	5562.2	5546.2	-0.29%	51.29%

STOCK PRICE INDEX WEIGHTED BY FREE FLOAT MARKET CAPITALIZATION ASE20 (2014=1000)

	1346.9	1341.6	-0.40%	24.87%
--	--------	--------	--------	--------

Total Return Index ASETR (2021=1074)

	1431.9	1426.2	-0.40%	32.75%
--	--------	--------	--------	--------

STOCK PRICE INDEX WEIGHTED BY MARKET CAPITALIZATION (1991=1000)

	TUESDAY 13/09/2022	WEDNESDAY 14/09/2022	% CHANGE	
			DAY BEFORE	YTD
GENERAL	4842.5	4831.4	-0.23%	20.63%
BANKS	6631.6	6625.4	-0.09%	0.90%
INSURANCE	1295.4	1295.9	0.03%	-2.45%
SERVICES	818.2	817.4	-0.09%	4.48%
INDUSTRY	7519.0	7488.0	-0.41%	59.30%

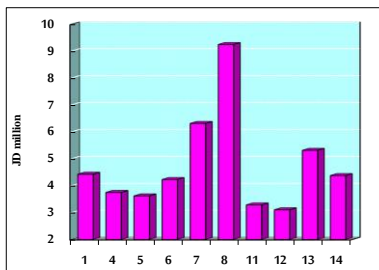
STOCK PRICE MARKET INDEX WEIGHTED BY FREE FLOAT MARKET CAP. (2012=1000)

	TUESDAY 13/09/2022	WEDNESDAY 14/09/2022	% CHANGE	
			DAY BEFORE	YTD
FIRST MARKET	1408.1	1402.4	-0.40%	22.49%
SECOND MARKET	793.0	795.6	0.33%	-15.05%

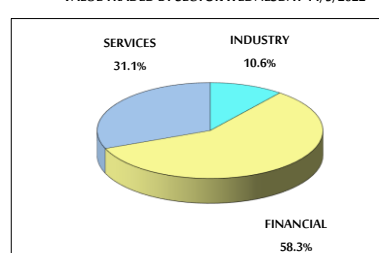
MARKET CAPITALIZATION (JD)

	18,565,450,532	18,524,561,096	-0.22%	19.55%
--	----------------	----------------	--------	--------

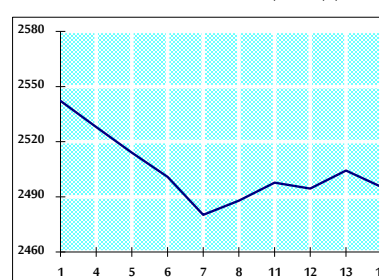
VALUE TRADED FROM 1/9 TO 14/9/2022



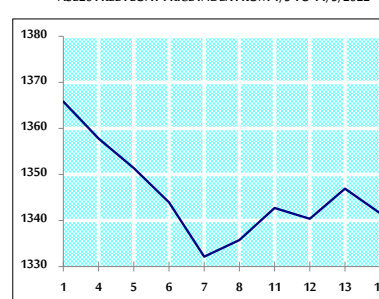
VALUE TRADED BY SECTOR WEDNESDAY 14/9/2022



GENERAL FREE FLOAT PRICE INDEX FROM 1/9 TO 14/9/2022



ASE20 FREE FLOAT PRICE INDEX FROM 1/9 TO 14/9/2022



GENERAL PRICE INDEX FROM 1/9 TO 14/9/2022

