

Daily Summary for Amman Stock Exchange

VALUE TRADED (JD)

	2021	2022	NET CHANGE	CHANGE (%)
Daily	5,446,954	9,314,821	3,867,867	71.01%
Cumulative (1/9-15/9)	70,320,910	56,980,143	-13,340,767	-18.97%
Cumulative (2/1-15/9)	1,461,392,192	1,503,285,094	41,892,902	2.87%

NO. OF SHARES TRADED

	2021	2022	NET CHANGE	CHANGE (%)
Daily	4,908,718	5,331,590	422,872	8.61%
Cumulative (1/9-15/9)	59,356,888	36,353,803	-23,003,085	-38.75%
Cumulative (2/1-15/9)	1,151,676,124	848,482,026	-303,194,098	-26.33%

NO. OF TRANSACTIONS

	2021	2022	NET CHANGE	CHANGE (%)
Daily	2,814	2,284	-530	-18.83%
Cumulative (1/9-15/9)	36,805	26,153	-10,652	-28.94%
Cumulative (2/1-15/9)	580,825	556,096	-24,729	-4.26%

SOME FINANCIAL RATIOS FOR THE ASE (15/9/2022)

SECTOR	P/E	P/BV	DIVIDEND YIELD (%)	TURNOVER (%)
FINANCIAL	14.258	0.860	4.826	0.094
SERVICES	18.763	1.426	4.058	0.087
INDUSTRY	12.301	2.809	4.077	0.031
OVERALL	13.512	1.279	4.500	0.086

STOCK PRICE INDEX WEIGHTED BY FREE FLOAT MARKET CAPITALIZATION (1999=1000)

	WEDNESDAY 14/09/2022	THURSDAY 15/09/2022	% CHANGE	
			DAY BEFORE	YTD
GENERAL	2495.3	2504.0	0.35%	18.19%
FINANCIAL	2647.6	2651.1	0.13%	1.79%
SERVICES	1735.9	1754.4	1.06%	32.17%
INDUSTRY	5546.2	5546.3	0.00%	51.30%

STOCK PRICE INDEX WEIGHTED BY FREE FLOAT MARKET CAPITALIZATION ASE20 (2014=1000)

	1341.6	1347.1	0.41%	25.38%
--	--------	--------	-------	--------

Total Return Index ASETR (2021=1074)

	1426.2	1432.0	0.41%	33.29%
--	--------	--------	-------	--------

STOCK PRICE INDEX WEIGHTED BY MARKET CAPITALIZATION (1991=1000)

	WEDNESDAY 14/09/2022	THURSDAY 15/09/2022	% CHANGE	
			DAY BEFORE	YTD
GENERAL	4831.4	4838.7	0.15%	20.81%
BANKS	6625.4	6624.7	-0.01%	0.89%
INSURANCE	1295.9	1295.8	-0.01%	-2.45%
SERVICES	817.4	821.8	0.53%	5.03%
INDUSTRY	7488.0	7504.2	0.22%	59.65%

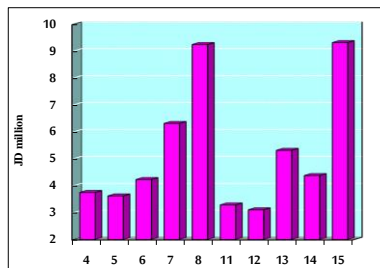
STOCK PRICE MARKET INDEX WEIGHTED BY FREE FLOAT MARKET CAP. (2012=1000)

	WEDNESDAY 14/09/2022	THURSDAY 15/09/2022	% CHANGE	
			DAY BEFORE	YTD
FIRST MARKET	1402.4	1407.1	0.33%	22.90%
SECOND MARKET	795.6	798.0	0.30%	-14.79%

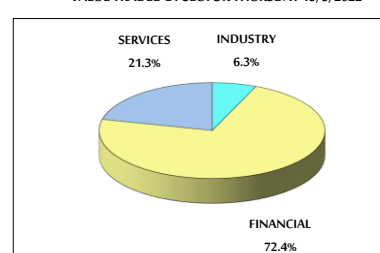
MARKET CAPITALIZATION (JD)

	18,524,561,096	18,551,970,690	0.15%	19.72%
--	----------------	----------------	-------	--------

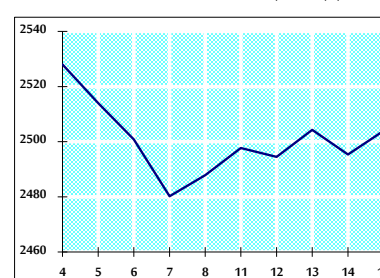
VALUE TRADED FROM 4/9 TO 15/9/2022



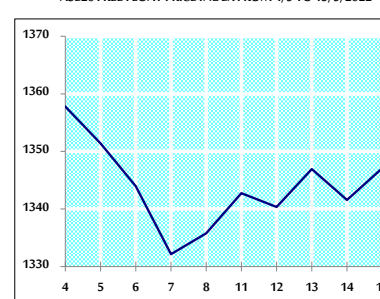
VALUE TRADED BY SECTOR THURSDAY 15/9/2022



GENERAL FREE FLOAT PRICE INDEX FROM 4/9 TO 15/9/2022



ASE20 FREE FLOAT PRICE INDEX FROM 4/9 TO 15/9/2022



GENERAL PRICE INDEX FROM 4/9 TO 15/9/2022

