

Daily Summary for Amman Stock Exchange

VALUE TRADED (JD)

	2021	2022	NET CHANGE	CHANGE (%)
Daily	7,134,751	8,106,137	971,386	13.61%
Cumulative (1/9-27/9)	126,020,619	109,695,040	-16,325,579	-12.95%
Cumulative (2/1-27/9)	1,517,091,901	1,555,999,991	38,908,090	2.56%

NO. OF SHARES TRADED

	2021	2022	NET CHANGE	CHANGE (%)
Daily	4,729,404	3,430,051	-1,299,353	-27.47%
Cumulative (1/9-27/9)	99,563,469	67,079,146	-32,484,323	-32.63%
Cumulative (2/1-27/9)	1,191,882,705	879,207,369	-312,675,336	-26.23%

NO. OF TRANSACTIONS

	2021	2022	NET CHANGE	CHANGE (%)
Daily	2,531	2,395	-136	-5.37%
Cumulative (1/9-27/9)	58,258	46,359	-11,899	-20.42%
Cumulative (2/1-27/9)	602,278	576,302	-25,976	-4.31%

SOME FINANCIAL RATIOS FOR THE ASE (27/9/2022)

SECTOR	P/E	P/BV	DIVIDEND YIELD (%)	TURNOVER (%)
FINANCIAL	14.179	0.855	4.826	0.044
SERVICES	18.615	1.415	4.090	0.084
INDUSTRY	11.680	2.668	4.294	0.076
OVERALL	13.187	1.248	4.598	0.055

STOCK PRICE INDEX WEIGHTED BY FREE FLOAT MARKET CAPITALIZATION (1999=1000)

	MONDAY 26/09/2022	TUESDAY 27/09/2022	% CHANGE	
			DAY BEFORE	YTD
GENERAL	2476.5	2473.1	-0.14%	16.73%
FINANCIAL	2651.0	2642.1	-0.34%	1.44%
SERVICES	1725.5	1727.6	0.12%	30.15%
INDUSTRY	5339.4	5347.1	0.14%	45.86%

STOCK PRICE INDEX WEIGHTED BY FREE FLOAT MARKET CAPITALIZATION ASE20 (2014=1000)

	1332.1	1328.9	-0.24%	23.69%
--	--------	--------	--------	--------

Total Return Index ASETR (2021=1074)

	1416.1	1412.7	-0.24%	31.49%
--	--------	--------	--------	--------

STOCK PRICE INDEX WEIGHTED BY MARKET CAPITALIZATION (1991=1000)

	MONDAY 26/09/2022	TUESDAY 27/09/2022	% CHANGE	
			DAY BEFORE	YTD
GENERAL	4741.4	4722.0	-0.41%	17.89%
BANKS	6604.0	6583.2	-0.31%	0.26%
INSURANCE	1352.9	1354.3	0.10%	1.95%
SERVICES	820.2	818.0	-0.27%	4.55%
INDUSTRY	7168.8	7127.8	-0.57%	51.64%

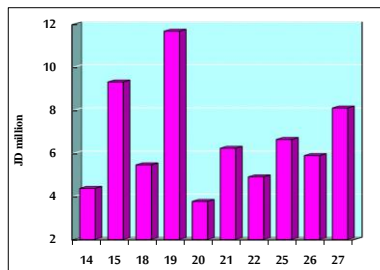
STOCK PRICE MARKET INDEX WEIGHTED BY FREE FLOAT MARKET CAP. (2012=1000)

	MONDAY 26/09/2022	TUESDAY 27/09/2022	% CHANGE	
			DAY BEFORE	YTD
FIRST MARKET	1391.4	1389.3	-0.15%	21.35%
SECOND MARKET	799.2	795.8	-0.42%	-15.03%

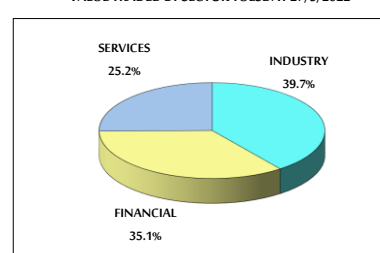
MARKET CAPITALIZATION (JD)

	18,197,313,546	18,125,886,790	-0.39%	16.97%
--	----------------	----------------	--------	--------

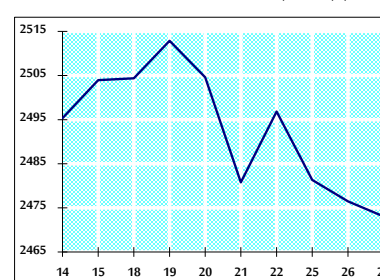
VALUE TRADED FROM 14/9 TO 27/9/2022



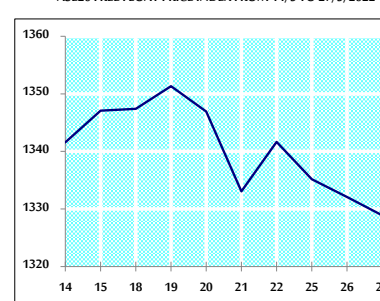
VALUE TRADED BY SECTOR TUESDAY 27/9/2022



GENERAL FREE FLOAT PRICE INDEX FROM 14/9 TO 27/9/2022



ASE20 FREE FLOAT PRICE INDEX FROM 14/9 TO 27/9/2022



GENERAL PRICE INDEX FROM 14/9 TO 27/9/2022

