

Daily Summary for Amman Stock Exchange

VALUE TRADED (JD)

	2021	2022	NET CHANGE	CHANGE (%)
Daily	9,540,918	4,969,299	-4,571,619	-47.92%
Cumulative (1/9-28/9)	135,561,537	114,664,339	-20,897,198	-15.42%
Cumulative (2/1-28/9)	1,526,632,819	1,560,969,290	34,336,471	2.25%

NO. OF SHARES TRADED

	2021	2022	NET CHANGE	CHANGE (%)
Daily	6,120,679	3,551,769	-2,568,910	-41.97%
Cumulative (1/9-28/9)	105,684,148	70,630,915	-35,053,233	-33.17%
Cumulative (2/1-28/9)	1,198,003,384	882,759,138	-315,244,246	-26.31%

NO. OF TRANSACTIONS

	2021	2022	NET CHANGE	CHANGE (%)
Daily	3,058	2,531	-527	-17.23%
Cumulative (1/9-28/9)	61,316	48,890	-12,426	-20.27%
Cumulative (2/1-28/9)	605,336	578,833	-26,503	-4.38%

SOME FINANCIAL RATIOS FOR THE ASE (28/9/2022)

SECTOR	P/E	P/BV	DIVIDEND YIELD (%)	TURNOVER (%)
FINANCIAL	14.177	0.855	4.826	0.045
SERVICES	18.596	1.414	4.094	0.075
INDUSTRY	11.792	2.693	4.253	0.101
OVERALL	13.234	1.253	4.581	0.057

STOCK PRICE INDEX WEIGHTED BY FREE FLOAT MARKET CAPITALIZATION (1999=1000)

	TUESDAY 27/09/2022	WEDNESDAY 28/09/2022	% CHANGE	
			DAY BEFORE	YTD
GENERAL	2473.1	2477.3	0.17%	16.93%
FINANCIAL	2642.1	2647.2	0.19%	1.64%
SERVICES	1727.6	1724.0	-0.21%	29.88%
INDUSTRY	5347.1	5377.4	0.57%	46.69%

STOCK PRICE INDEX WEIGHTED BY FREE FLOAT MARKET CAPITALIZATION ASE20 (2014=1000)

	1328.9	1332.1	0.24%	23.99%
--	--------	--------	-------	--------

Total Return Index ASETR (2021=1074)

	1412.7	1416.1	0.24%	31.81%
--	--------	--------	-------	--------

STOCK PRICE INDEX WEIGHTED BY MARKET CAPITALIZATION (1991=1000)

	TUESDAY 27/09/2022	WEDNESDAY 28/09/2022	% CHANGE	
			DAY BEFORE	YTD
GENERAL	4722.0	4738.9	0.36%	18.32%
BANKS	6583.2	6579.3	-0.06%	0.20%
INSURANCE	1354.3	1355.9	0.12%	2.08%
SERVICES	818.0	820.1	0.26%	4.82%
INDUSTRY	7127.8	7187.9	0.84%	52.92%

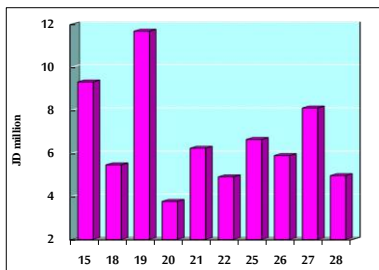
STOCK PRICE MARKET INDEX WEIGHTED BY FREE FLOAT MARKET CAP. (2012=1000)

	TUESDAY 27/09/2022	WEDNESDAY 28/09/2022	% CHANGE	
			DAY BEFORE	YTD
FIRST MARKET	1389.3	1391.7	0.17%	21.55%
SECOND MARKET	795.8	800.3	0.56%	-14.55%

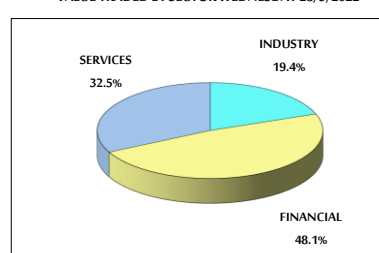
MARKET CAPITALIZATION (JD)

	18,125,886,790	18,187,043,256	0.34%	17.37%
--	----------------	----------------	-------	--------

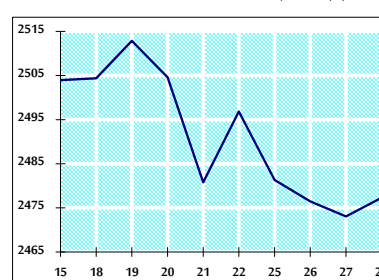
VALUE TRADED FROM 15/9 TO 28/9/2022



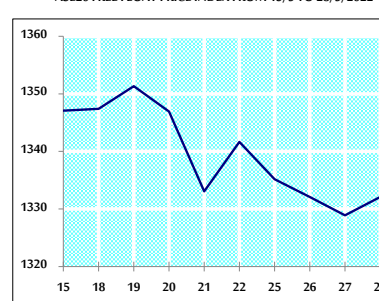
VALUE TRADED BY SECTOR WEDNESDAY 28/9/2022



GENERAL FREE FLOAT PRICE INDEX FROM 15/9 TO 28/9/2022



ASE20 FREE FLOAT PRICE INDEX FROM 15/9 TO 28/9/2022



GENERAL PRICE INDEX FROM 15/9 TO 28/9/2022

