

Daily Summary for Amman Stock Exchange

VALUE TRADED (JD)

	2021	2022	NET CHANGE	CHANGE (%)
Daily	7,544,796	3,562,529	-3,982,267	-52.78%
Cumulative (2/10-3/10)	13,373,340	7,284,316	-6,089,024	-45.53%
Cumulative (2/1-3/10)	1,561,825,794	1,575,374,402	13,548,608	0.87%

NO. OF SHARES TRADED

	2021	2022	NET CHANGE	CHANGE (%)
Daily	5,069,526	2,509,274	-2,560,252	-50.50%
Cumulative (2/10-3/10)	8,328,178	4,950,413	-3,377,765	-40.56%
Cumulative (2/1-3/10)	1,219,526,088	893,320,827	-326,205,261	-26.75%

NO. OF TRANSACTIONS

	2021	2022	NET CHANGE	CHANGE (%)
Daily	3,247	2,117	-1,130	-34.80%
Cumulative (2/10-3/10)	6,136	4,130	-2,006	-32.69%
Cumulative (2/1-3/10)	617,745	585,784	-31,961	-5.17%

SOME FINANCIAL RATIOS FOR THE ASE (3/10/2022)

SECTOR	P/E	P/BV	DIVIDEND YIELD (%)	TURNOVER (%)
FINANCIAL	14.165	0.854	4.830	0.036
SERVICES	18.531	1.409	4.109	0.070
INDUSTRY	11.995	2.740	4.181	0.017
OVERALL	13.354	1.265	4.541	0.040

STOCK PRICE INDEX WEIGHTED BY FREE FLOAT MARKET CAPITALIZATION (1999=1000)

	SUNDAY 02/10/2022	MONDAY 03/10/2022	% CHANGE	
			DAY BEFORE	YTD
GENERAL	2486.6	2481.6	-0.20%	17.13%
FINANCIAL	2647.9	2643.7	-0.16%	1.51%
SERVICES	1723.7	1716.3	-0.43%	29.30%
INDUSTRY	5476.6	5475.2	-0.03%	49.35%

STOCK PRICE INDEX WEIGHTED BY FREE FLOAT MARKET CAPITALIZATION ASE20 (2014=1000)

	1336.0	1333.9	-0.16%	24.16%
--	--------	--------	--------	--------

Total Return Index ASETR (2021=1074)

	1420.3	1418.0	-0.16%	31.98%
--	--------	--------	--------	--------

STOCK PRICE INDEX WEIGHTED BY MARKET CAPITALIZATION (1991=1000)

	SUNDAY 02/10/2022	MONDAY 03/10/2022	% CHANGE	
			DAY BEFORE	YTD
GENERAL	4767.1	4767.2	0.00%	19.02%
BANKS	6565.2	6570.9	0.09%	0.07%
INSURANCE	1379.7	1379.6	0.00%	3.86%
SERVICES	820.8	818.0	-0.35%	4.55%
INDUSTRY	7298.7	7299.9	0.02%	55.30%

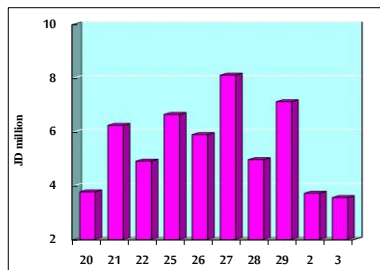
STOCK PRICE MARKET INDEX WEIGHTED BY FREE FLOAT MARKET CAP. (2012=1000)

	SUNDAY 02/10/2022	MONDAY 03/10/2022	% CHANGE	
			DAY BEFORE	YTD
FIRST MARKET	1396.7	1393.2	-0.25%	21.69%
SECOND MARKET	800.3	801.9	0.19%	-14.38%

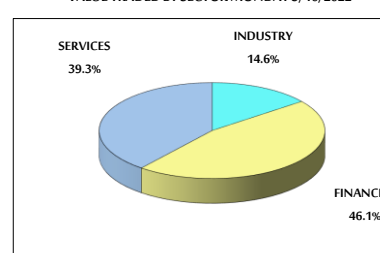
MARKET CAPITALIZATION (JD)

	18,287,742,472	18,288,198,579	0.00%	18.02%
--	----------------	----------------	-------	--------

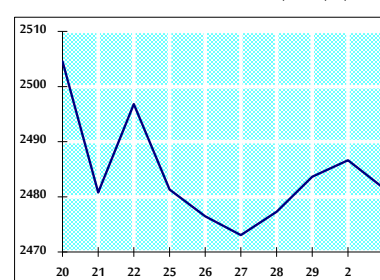
VALUE TRADED FROM 20/9 TO 3/10/2022



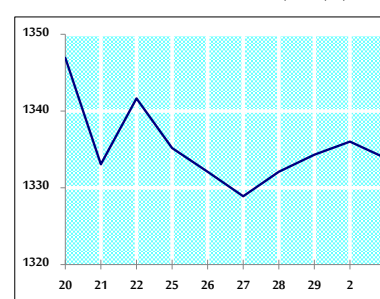
VALUE TRADED BY SECTOR MONDAY 3/10/2022



GENERAL FREE FLOAT PRICE INDEX FROM 20/9 TO 3/10/2022



ASE20 FREE FLOAT PRICE INDEX FROM 20/9 TO 3/10/2022



GENERAL PRICE INDEX FROM 20/9 TO 3/10/2022

