

Daily Summary for Amman Stock Exchange

VALUE TRADED (JD)

	2021	2022	NET CHANGE	CHANGE (%)
Daily	5,626,020	4,931,010	-695,010	-12.35%
Cumulative (2/10-4/10)	18,999,360	12,215,326	-6,784,034	-35.71%
Cumulative (2/1-4/10)	1,567,451,814	1,580,305,412	12,853,598	0.82%

NO. OF SHARES TRADED

	2021	2022	NET CHANGE	CHANGE (%)
Daily	3,736,340	3,352,636	-383,704	-10.27%
Cumulative (2/10-4/10)	12,064,518	8,303,049	-3,761,469	-31.18%
Cumulative (2/1-4/10)	1,223,262,428	896,673,463	-326,588,965	-26.70%

NO. OF TRANSACTIONS

	2021	2022	NET CHANGE	CHANGE (%)
Daily	2,866	2,641	-225	-7.85%
Cumulative (2/10-4/10)	9,002	6,771	-2,231	-24.78%
Cumulative (2/1-4/10)	620,611	588,425	-32,186	-5.19%

SOME FINANCIAL RATIOS FOR THE ASE (4/10/2022)

SECTOR	P/E	P/BV	DIVIDEND YIELD (%)	TURNOVER (%)
FINANCIAL	14.177	0.855	4.826	0.041
SERVICES	18.440	1.402	4.129	0.111
INDUSTRY	11.954	2.730	4.195	0.034
OVERALL	13.333	1.263	4.549	0.054

STOCK PRICE INDEX WEIGHTED BY FREE FLOAT MARKET CAPITALIZATION (1999=1000)

	MONDAY 03/10/2022	TUESDAY 04/10/2022	% CHANGE	
			DAY BEFORE	YTD
GENERAL	2481.6	2475.7	-0.24%	16.85%
FINANCIAL	2643.7	2644.2	0.02%	1.52%
SERVICES	1716.3	1703.8	-0.73%	28.35%
INDUSTRY	5475.2	5453.4	-0.40%	48.76%

STOCK PRICE INDEX WEIGHTED BY FREE FLOAT MARKET CAPITALIZATION ASE20 (2014=1000)

	1333.9	1330.6	-0.25%	23.85%
--	--------	--------	--------	--------

Total Return Index ASETR (2021=1074)

	1418.0	1414.5	-0.25%	31.66%
--	--------	--------	--------	--------

STOCK PRICE INDEX WEIGHTED BY MARKET CAPITALIZATION (1991=1000)

	MONDAY 03/10/2022	TUESDAY 04/10/2022	% CHANGE	
			DAY BEFORE	YTD
GENERAL	4767.2	4759.6	-0.16%	18.83%
BANKS	6570.9	6578.3	0.11%	0.18%
INSURANCE	1379.6	1388.6	0.66%	4.54%
SERVICES	818.0	814.9	-0.38%	4.15%
INDUSTRY	7299.9	7270.0	-0.41%	54.66%

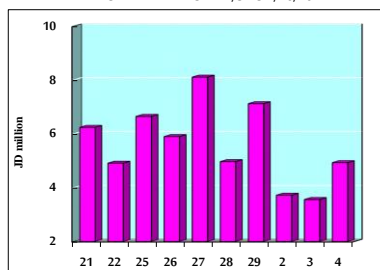
STOCK PRICE MARKET INDEX WEIGHTED BY FREE FLOAT MARKET CAP. (2012=1000)

	MONDAY 03/10/2022	TUESDAY 04/10/2022	% CHANGE	
			DAY BEFORE	YTD
FIRST MARKET	1393.2	1389.8	-0.24%	21.39%
SECOND MARKET	801.9	799.7	-0.27%	-14.62%

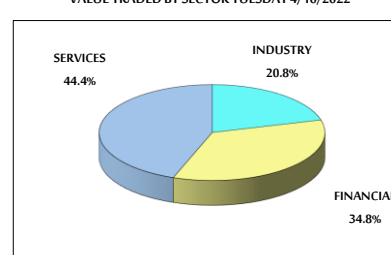
MARKET CAPITALIZATION (JD)

	18,288,198,579	18,259,701,066	-0.16%	17.84%
--	----------------	----------------	--------	--------

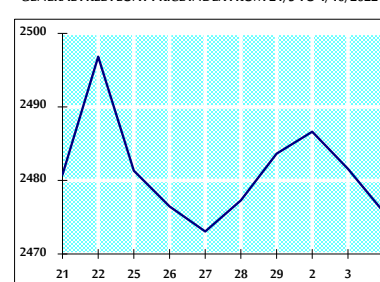
VALUE TRADED FROM 21/9 TO 4/10/2022



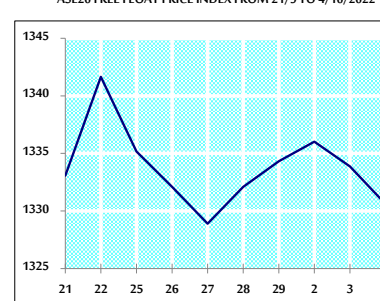
VALUE TRADED BY SECTOR TUESDAY 4/10/2022



GENERAL FREE FLOAT PRICE INDEX FROM 21/9 TO 4/10/2022



ASE20 FREE FLOAT PRICE INDEX FROM 21/9 TO 4/10/2022



GENERAL PRICE INDEX FROM 21/9 TO 4/10/2022

