

Daily Summary for Amman Stock Exchange

VALUE TRADED (JD)

	2021	2022	NET CHANGE	CHANGE (%)
Daily	5,181,253	4,052,708	-1,128,545	-21.78%
Cumulative (2/10-5/10)	24,180,613	16,268,034	-7,912,579	-32.72%
Cumulative (2/1-5/10)	1,572,633,067	1,584,358,120	11,725,053	0.75%

NO. OF SHARES TRADED

	2021	2022	NET CHANGE	CHANGE (%)
Daily	4,904,537	3,245,303	-1,659,234	-33.83%
Cumulative (2/10-5/10)	16,969,055	11,548,352	-5,420,703	-31.94%
Cumulative (2/1-5/10)	1,228,166,965	899,918,766	-328,248,199	-26.73%

NO. OF TRANSACTIONS

	2021	2022	NET CHANGE	CHANGE (%)
Daily	3,454	2,717	-737	-21.34%
Cumulative (2/10-5/10)	12,456	9,488	-2,968	-23.83%
Cumulative (2/1-5/10)	624,065	591,142	-32,923	-5.28%

SOME FINANCIAL RATIOS FOR THE ASE (5/10/2022)

SECTOR	P/E	P/BV	DIVIDEND YIELD (%)	TURNOVER (%)
FINANCIAL	14.190	0.856	4.822	0.040
SERVICES	18.372	1.397	4.144	0.082
INDUSTRY	11.904	2.719	4.213	0.076
OVERALL	13.309	1.260	4.557	0.052

STOCK PRICE INDEX WEIGHTED BY FREE FLOAT MARKET CAPITALIZATION (1999=1000)

	TUESDAY 04/10/2022	WEDNESDAY 05/10/2022	% CHANGE	
			DAY BEFORE	YTD
GENERAL	2475.7	2473.1	-0.11%	16.73%
FINANCIAL	2644.2	2652.2	0.31%	1.83%
SERVICES	1703.8	1689.1	-0.87%	27.24%
INDUSTRY	5453.4	5432.1	-0.39%	48.18%

STOCK PRICE INDEX WEIGHTED BY FREE FLOAT MARKET CAPITALIZATION ASE20 (2014=1000)

	1330.6	1329.7	-0.07%	23.77%
--	--------	--------	--------	--------

Total Return Index ASETR (2021=1074)

	1414.5	1413.5	-0.07%	31.57%
--	--------	--------	--------	--------

STOCK PRICE INDEX WEIGHTED BY MARKET CAPITALIZATION (1991=1000)

	TUESDAY 04/10/2022	WEDNESDAY 05/10/2022	% CHANGE	
			DAY BEFORE	YTD
GENERAL	4759.6	4751.0	-0.18%	18.62%
BANKS	6578.3	6588.3	0.15%	0.33%
INSURANCE	1388.6	1378.1	-0.76%	3.74%
SERVICES	814.9	815.2	0.03%	4.19%
INDUSTRY	7270.0	7229.5	-0.56%	53.80%

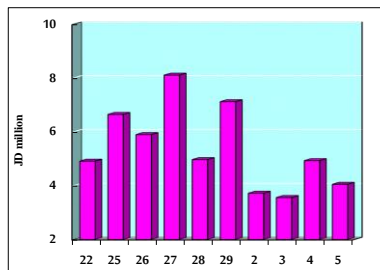
STOCK PRICE MARKET INDEX WEIGHTED BY FREE FLOAT MARKET CAP. (2012=1000)

	TUESDAY 04/10/2022	WEDNESDAY 05/10/2022	% CHANGE	
			DAY BEFORE	YTD
FIRST MARKET	1389.8	1389.0	-0.06%	21.32%
SECOND MARKET	799.7	797.9	-0.22%	-14.81%

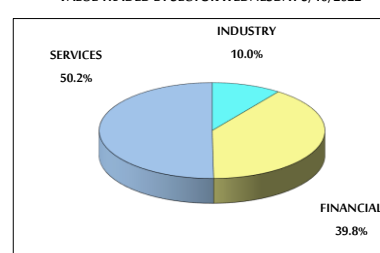
MARKET CAPITALIZATION (JD)

	18,259,701,066	18,228,919,815	-0.17%	17.64%
--	----------------	----------------	--------	--------

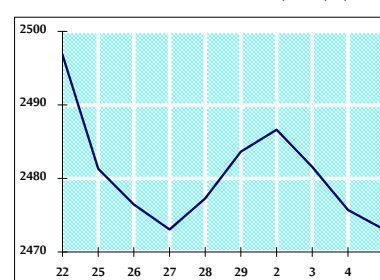
VALUE TRADED FROM 22/9 TO 5/10/2022



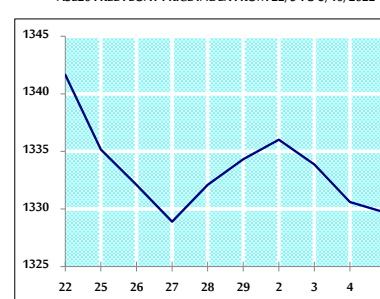
VALUE TRADED BY SECTOR WEDNESDAY 5/10/2022



GENERAL FREE FLOAT PRICE INDEX FROM 22/9 TO 5/10/2022



ASE20 FREE FLOAT PRICE INDEX FROM 22/9 TO 5/10/2022



GENERAL PRICE INDEX FROM 22/9 TO 5/10/2022

