

Daily Summary for Amman Stock Exchange

VALUE TRADED (JD)

	2021	2022	NET CHANGE	CHANGE (%)
Daily	4,968,791	6,488,904	1,520,113	30.59%
Cumulative (2/10-6/10)	29,149,404	22,756,938	-6,392,466	-21.93%
Cumulative (2/1-6/10)	1,577,601,858	1,590,847,024	13,245,166	0.84%

NO. OF SHARES TRADED

	2021	2022	NET CHANGE	CHANGE (%)
Daily	4,557,246	4,005,481	-551,765	-12.11%
Cumulative (2/10-6/10)	21,526,301	15,553,833	-5,972,468	-27.74%
Cumulative (2/1-6/10)	1,232,724,211	903,924,247	-328,799,964	-26.67%

NO. OF TRANSACTIONS

	2021	2022	NET CHANGE	CHANGE (%)
Daily	3,189	2,775	-414	-12.98%
Cumulative (2/10-6/10)	15,645	12,263	-3,382	-21.62%
Cumulative (2/1-6/10)	627,254	593,917	-33,337	-5.31%

SOME FINANCIAL RATIOS FOR THE ASE (6/10/2022)

SECTOR	P/E	P/BV	DIVIDEND YIELD (%)	TURNOVER (%)
FINANCIAL	14.164	0.854	4.831	0.049
SERVICES	18.551	1.410	4.104	0.135
INDUSTRY	11.879	2.713	4.222	0.032
OVERALL	13.304	1.260	4.559	0.065

STOCK PRICE INDEX WEIGHTED BY FREE FLOAT MARKET CAPITALIZATION (1999=1000)

	WEDNESDAY 05/10/2022	THURSDAY 06/10/2022	% CHANGE	
			DAY BEFORE	YTD
GENERAL	2473.1	2479.7	0.27%	17.04%
FINANCIAL	2652.2	2647.8	-0.17%	1.67%
SERVICES	1689.1	1720.1	1.84%	29.58%
INDUSTRY	5432.1	5417.5	-0.27%	47.78%

STOCK PRICE INDEX WEIGHTED BY FREE FLOAT MARKET CAPITALIZATION ASE20 (2014=1000)

	1329.7	1332.9	0.24%	24.07%
--	--------	--------	-------	--------

Total Return Index ASETR (2021=1074)

	1413.5	1417.0	0.24%	31.89%
--	--------	--------	-------	--------

STOCK PRICE INDEX WEIGHTED BY MARKET CAPITALIZATION (1991=1000)

	WEDNESDAY 05/10/2022	THURSDAY 06/10/2022	% CHANGE	
			DAY BEFORE	YTD
GENERAL	4751.0	4749.2	-0.04%	18.57%
BANKS	6588.3	6572.7	-0.24%	0.10%
INSURANCE	1378.1	1380.9	0.21%	3.96%
SERVICES	815.2	816.2	0.12%	4.32%
INDUSTRY	7229.5	7237.8	0.11%	53.98%

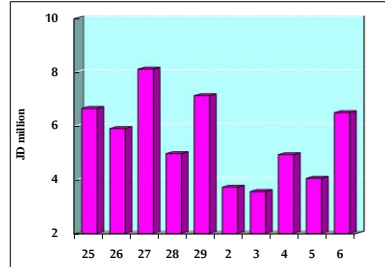
STOCK PRICE MARKET INDEX WEIGHTED BY FREE FLOAT MARKET CAP. (2012=1000)

	WEDNESDAY 05/10/2022	THURSDAY 06/10/2022	% CHANGE	
			DAY BEFORE	YTD
FIRST MARKET	1389.0	1392.4	0.24%	21.62%
SECOND MARKET	797.9	800.9	0.37%	-14.49%

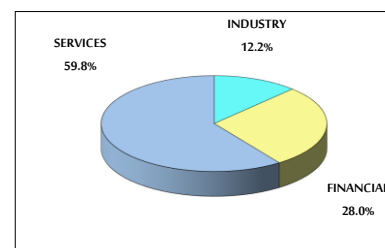
MARKET CAPITALIZATION (JD)

	18,228,919,815	18,223,160,217	-0.03%	17.60%
--	----------------	----------------	--------	--------

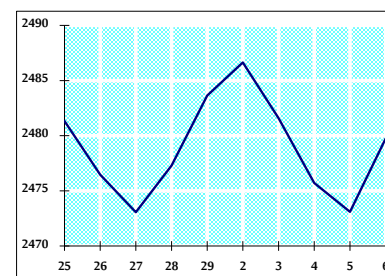
VALUE TRADED FROM 25/9 TO 6/10/2022



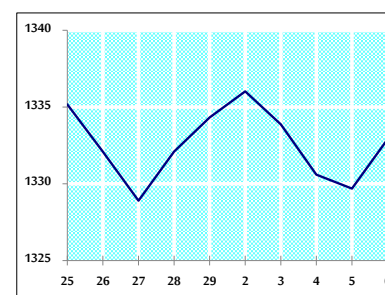
VALUE TRADED BY SECTOR THURSDAY 6/10/2022



GENERAL FREE FLOAT PRICE INDEX FROM 25/9 TO 6/10/2022



ASE20 FREE FLOAT PRICE INDEX FROM 25/9 TO 6/10/2022



GENERAL PRICE INDEX FROM 25/9 TO 6/10/2022

