

Daily Summary for Amman Stock Exchange

VALUE TRADED (JD)

	2021	2022	NET CHANGE	CHANGE (%)
Daily	7,253,954	7,324,083	70,129	0.97%
Cumulative (1/11-7/11)	31,768,110	28,661,999	-3,106,111	-9.78%
Cumulative (2/1-7/11)	1,702,878,070	1,721,964,580	19,086,510	1.12%

NO. OF SHARES TRADED

	2021	2022	NET CHANGE	CHANGE (%)
Daily	5,433,349	4,412,610	-1,020,739	-18.79%
Cumulative (1/11-7/11)	26,752,942	20,311,326	-6,441,616	-24.08%
Cumulative (2/1-7/11)	1,333,429,129	995,721,790	-337,707,339	-25.33%

NO. OF TRANSACTIONS

	2021	2022	NET CHANGE	CHANGE (%)
Daily	3,743	2,221	-1,522	-40.66%
Cumulative (1/11-7/11)	17,390	10,493	-6,897	-39.66%
Cumulative (2/1-7/11)	694,727	650,022	-44,705	-6.43%

SOME FINANCIAL RATIOS FOR THE ASE (7/11/2022)

SECTOR	P/E	P/BV	DIVIDEND YIELD (%)	TURNOVER (%)
FINANCIAL	14.257	0.854	4.829	0.034
SERVICES	17.985	1.366	4.235	0.191
INDUSTRY	10.821	2.471	4.635	0.088
OVERALL	12.779	1.210	4.746	0.072

STOCK PRICE INDEX WEIGHTED BY FREE FLOAT MARKET CAPITALIZATION (1999=1000)

	SUNDAY 06/11/2022	MONDAY 07/11/2022	% CHANGE	
			DAY BEFORE	YTD
GENERAL	2404.5	2408.9	0.18%	13.70%
FINANCIAL	2626.5	2636.7	0.39%	1.24%
SERVICES	1634.7	1637.9	0.20%	23.39%
INDUSTRY	5032.8	5005.3	-0.55%	36.54%

STOCK PRICE INDEX WEIGHTED BY FREE FLOAT MARKET CAPITALIZATION ASE20 (2014=1000)

	1295.5	1298.7	0.24%	20.88%
--	--------	--------	-------	--------

Total Return Index ASETR (2021=1074)

	1377.2	1380.5	0.24%	28.50%
--	--------	--------	-------	--------

STOCK PRICE INDEX WEIGHTED BY MARKET CAPITALIZATION (1991=1000)

	SUNDAY 06/11/2022	MONDAY 07/11/2022	% CHANGE	
			DAY BEFORE	YTD
GENERAL	4563.3	4562.1	-0.03%	13.90%
BANKS	6560.3	6580.3	0.30%	0.21%
INSURANCE	1364.2	1367.2	0.21%	2.92%
SERVICES	806.8	808.7	0.23%	3.36%
INDUSTRY	6613.2	6580.8	-0.49%	40.00%

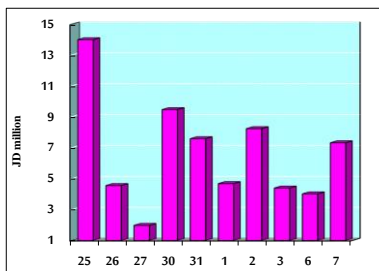
STOCK PRICE MARKET INDEX WEIGHTED BY FREE FLOAT MARKET CAP. (2012=1000)

	SUNDAY 06/11/2022	MONDAY 07/11/2022	% CHANGE	
			DAY BEFORE	YTD
FIRST MARKET	1352.1	1354.7	0.19%	18.32%
SECOND MARKET	778.8	777.6	-0.16%	-16.98%

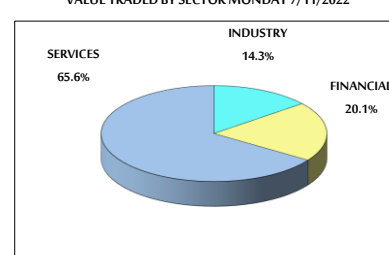
MARKET CAPITALIZATION (JD)

	17,395,820,180	17,391,768,180	-0.02%	12.24%
--	----------------	----------------	--------	--------

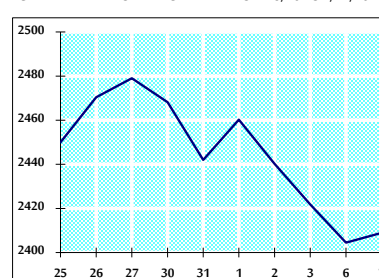
VALUE TRADED FROM 25/10 TO 7/11/2022



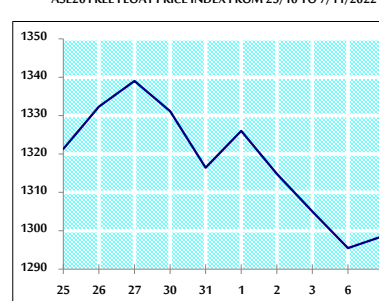
VALUE TRADED BY SECTOR MONDAY 7/11/2022



GENERAL FREE FLOAT PRICE INDEX FROM 25/10 TO 7/11/2022



ASE20 FREE FLOAT PRICE INDEX FROM 25/10 TO 7/11/2022



GENERAL PRICE INDEX FROM 25/10 TO 7/11/2022

