

### Daily Summary for Amman Stock Exchange

VALUE TRADED (JD)

	2021	2022	NET CHANGE	CHANGE (%)
Daily	5,487,408	10,812,525	5,325,117	97.04%
Cumulative (1/11-9/11)	43,666,719	50,921,393	7,254,674	16.61%
Cumulative (2/1-9/11)	1,714,776,679	1,744,223,974	29,447,295	1.72%

NO. OF SHARES TRADED

	2021	2022	NET CHANGE	CHANGE (%)
Daily	4,452,754	10,276,178	5,823,424	130.78%
Cumulative (1/11-9/11)	35,588,905	40,535,077	4,946,172	13.90%
Cumulative (2/1-9/11)	1,342,265,092	1,015,945,541	-326,319,551	-24.31%

NO. OF TRANSACTIONS

	2021	2022	NET CHANGE	CHANGE (%)
Daily	3,406	2,504	-902	-26.48%
Cumulative (1/11-9/11)	23,928	15,754	-8,174	-34.16%
Cumulative (2/1-9/11)	701,265	655,283	-45,982	-6.56%

SOME FINANCIAL RATIOS FOR THE ASE (9/11/2022)

SECTOR	P/E	P/BV	DIVIDEND YIELD (%)	TURNOVER (%)
FINANCIAL	14.338	0.859	4.802	0.193
SERVICES	18.400	1.398	4.139	0.064
INDUSTRY	10.926	2.496	4.590	0.213
OVERALL	12.907	1.222	4.698	0.168

STOCK PRICE INDEX WEIGHTED BY FREE FLOAT MARKET CAPITALIZATION (1999=1000)

	TUESDAY 08/11/2022	WEDNESDAY 09/11/2022	% CHANGE	
			DAY BEFORE	YTD
GENERAL	2445.0	2440.0	-0.21%	15.17%
FINANCIAL	2652.5	2651.7	-0.03%	1.81%
SERVICES	1693.0	1687.4	-0.33%	27.12%
INDUSTRY	5091.9	5061.3	-0.60%	38.06%

STOCK PRICE INDEX WEIGHTED BY FREE FLOAT MARKET CAPITALIZATION ASE20 (2014=1000)

	1319.3	1314.7	-0.35%	22.37%
--	--------	--------	--------	--------

Total Return Index ASETR (2021=1074)

	1402.5	1397.6	-0.35%	30.09%
--	--------	--------	--------	--------

STOCK PRICE INDEX WEIGHTED BY MARKET CAPITALIZATION (1991=1000)

	TUESDAY 08/11/2022	WEDNESDAY 09/11/2022	% CHANGE	
			DAY BEFORE	YTD
GENERAL	4619.3	4607.9	-0.25%	15.05%
BANKS	6613.4	6623.4	0.15%	0.87%
INSURANCE	1350.6	1353.3	0.19%	1.87%
SERVICES	817.7	817.9	0.03%	4.54%
INDUSTRY	6725.3	6672.3	-0.79%	41.95%

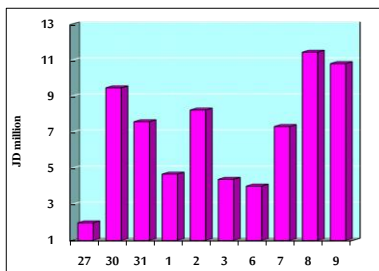
STOCK PRICE MARKET INDEX WEIGHTED BY FREE FLOAT MARKET CAP. (2012=1000)

	TUESDAY 08/11/2022	WEDNESDAY 09/11/2022	% CHANGE	
			DAY BEFORE	YTD
FIRST MARKET	1376.0	1372.8	-0.23%	19.90%
SECOND MARKET	778.8	774.8	-0.51%	-17.27%

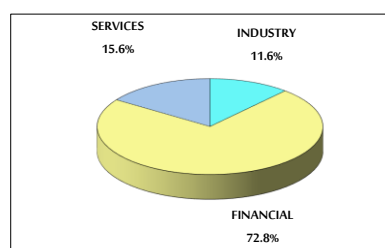
MARKET CAPITALIZATION (JD)

	17,598,950,014	17,557,468,065	-0.24%	13.31%
--	----------------	----------------	--------	--------

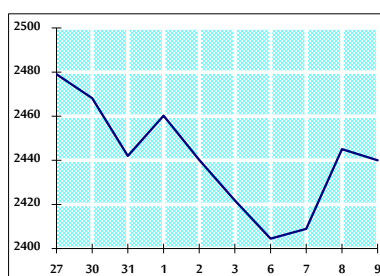
VALUE TRADED FROM 27/10 TO 9/11/2022



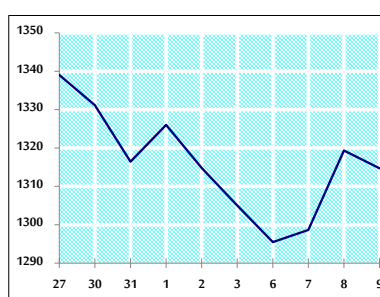
VALUE TRADED BY SECTOR WEDNESDAY 9/11/2022



GENERAL FREE FLOAT PRICE INDEX FROM 27/10 TO 9/11/2022



ASE20 FREE FLOAT PRICE INDEX FROM 27/10 TO 9/11/2022



GENERAL PRICE INDEX FROM 27/10 TO 9/11/2022

