

Daily Summary for Amman Stock Exchange

VALUE TRADED (JD)

	2021	2022	NET CHANGE	CHANGE (%)
Daily	5,924,014	3,591,833	-2,332,181	-39.37%
Cumulative (1/11-10/11)	49,590,733	54,513,226	4,922,493	9.93%
Cumulative (2/1-10/11)	1,720,700,693	1,747,815,807	27,115,114	1.58%

NO. OF SHARES TRADED

	2021	2022	NET CHANGE	CHANGE (%)
Daily	4,817,959	3,399,290	-1,418,669	-29.45%
Cumulative (1/11-10/11)	40,406,864	43,934,367	3,527,503	8.73%
Cumulative (2/1-10/11)	1,347,083,051	1,019,344,831	-327,738,220	-24.33%

NO. OF TRANSACTIONS

	2021	2022	NET CHANGE	CHANGE (%)
Daily	3,695	1,962	-1,733	-46.90%
Cumulative (1/11-10/11)	27,623	17,716	-9,907	-35.87%
Cumulative (2/1-10/11)	704,960	657,245	-47,715	-6.77%

SOME FINANCIAL RATIOS FOR THE ASE (10/11/2022)

SECTOR	P/E	P/BV	DIVIDEND YIELD (%)	TURNOVER (%)
FINANCIAL	14.267	0.855	4.826	0.058
SERVICES	18.367	1.395	4.147	0.052
INDUSTRY	10.984	2.509	4.566	0.049
OVERALL	12.896	1.221	4.703	0.056

STOCK PRICE INDEX WEIGHTED BY FREE FLOAT MARKET CAPITALIZATION (1999=1000)

	WEDNESDAY 09/11/2022	THURSDAY 10/11/2022	% CHANGE	
			DAY BEFORE	YTD
GENERAL	2440.0	2436.5	-0.14%	15.00%
FINANCIAL	2651.7	2645.3	-0.24%	1.57%
SERVICES	1687.4	1680.9	-0.38%	26.63%
INDUSTRY	5061.3	5091.3	0.59%	38.88%

STOCK PRICE INDEX WEIGHTED BY FREE FLOAT MARKET CAPITALIZATION ASE20 (2014=1000)

	1314.7	1313.9	-0.06%	22.30%
--	--------	--------	--------	--------

Total Return Index ASETR (2021=1074)

	1397.6	1396.8	-0.06%	30.01%
--	--------	--------	--------	--------

STOCK PRICE INDEX WEIGHTED BY MARKET CAPITALIZATION (1991=1000)

	WEDNESDAY 09/11/2022	THURSDAY 10/11/2022	% CHANGE	
			DAY BEFORE	YTD
GENERAL	4607.9	4603.8	-0.09%	14.94%
BANKS	6623.4	6587.7	-0.54%	0.32%
INSURANCE	1353.3	1352.7	-0.04%	1.83%
SERVICES	817.9	818.2	0.03%	4.58%
INDUSTRY	6672.3	6697.5	0.38%	42.49%

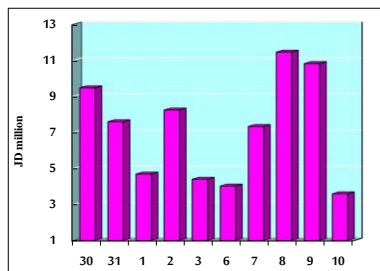
STOCK PRICE MARKET INDEX WEIGHTED BY FREE FLOAT MARKET CAP. (2012=1000)

	WEDNESDAY 09/11/2022	THURSDAY 10/11/2022	% CHANGE	
			DAY BEFORE	YTD
FIRST MARKET	1372.8	1371.3	-0.11%	19.77%
SECOND MARKET	774.8	773.7	-0.15%	-17.39%

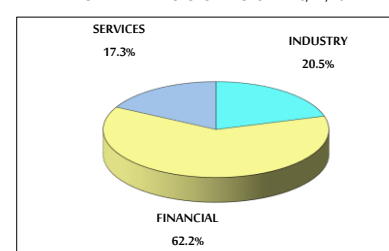
MARKET CAPITALIZATION (JD)

	17,557,468,065	17,543,521,209	-0.08%	13.22%
--	----------------	----------------	--------	--------

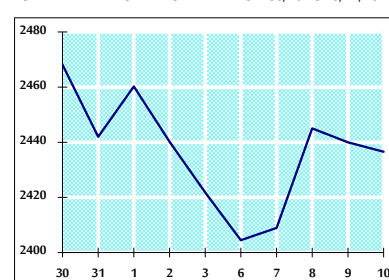
VALUE TRADED FROM 30/10 TO 10/11/2022



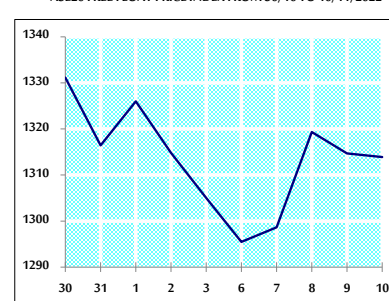
VALUE TRADED BY SECTOR THURSDAY 10/11/2022



GENERAL FREE FLOAT PRICE INDEX FROM 30/10 TO 10/11/2022



ASE20 FREE FLOAT PRICE INDEX FROM 30/10 TO 10/11/2022



GENERAL PRICE INDEX FROM 30/10 TO 10/11/2022

