

Daily Summary for Amman Stock Exchange

VALUE TRADED (JD)

	2021	2022	NET CHANGE	CHANGE (%)
Daily	5,264,202	3,217,517	-2,046,685	-38.88%
Cumulative (1/11-14/11)	60,124,449	62,597,921	2,473,472	4.11%
Cumulative (2/1-14/11)	1,731,234,409	1,755,900,502	24,666,093	1.42%

NO. OF SHARES TRADED

	2021	2022	NET CHANGE	CHANGE (%)
Daily	5,251,763	3,196,952	-2,054,811	-39.13%
Cumulative (1/11-14/11)	50,212,029	50,787,887	575,858	1.15%
Cumulative (2/1-14/11)	1,356,888,216	1,026,198,351	-330,689,865	-24.37%

NO. OF TRANSACTIONS

	2021	2022	NET CHANGE	CHANGE (%)
Daily	3,710	2,386	-1,324	-35.69%
Cumulative (1/11-14/11)	34,509	22,553	-11,956	-34.65%
Cumulative (2/1-14/11)	711,846	662,082	-49,764	-6.99%

SOME FINANCIAL RATIOS FOR THE ASE (14/11/2022)

SECTOR	P/E	P/BV	DIVIDEND YIELD (%)	TURNOVER (%)
FINANCIAL	14.238	0.853	4.835	0.043
SERVICES	18.295	1.390	4.163	0.096
INDUSTRY	11.195	2.557	4.480	0.031
OVERALL	12.965	1.228	4.678	0.052

STOCK PRICE INDEX WEIGHTED BY FREE FLOAT MARKET CAPITALIZATION (1999=1000)

	SUNDAY 13/11/2022	MONDAY 14/11/2022	% CHANGE	
			DAY BEFORE	YTD
GENERAL	2456.4	2437.5	-0.77%	15.05%
FINANCIAL	2653.1	2641.7	-0.43%	1.43%
SERVICES	1691.6	1667.0	-1.45%	25.58%
INDUSTRY	5226.6	5184.4	-0.81%	41.42%

STOCK PRICE INDEX WEIGHTED BY FREE FLOAT MARKET CAPITALIZATION ASE20 (2014=1000)

	1325.3	1314.9	-0.79%	22.39%
--	--------	--------	--------	--------

Total Return Index ASETR (2021=1074)

	1408.8	1397.8	-0.79%	30.10%
--	--------	--------	--------	--------

STOCK PRICE INDEX WEIGHTED BY MARKET CAPITALIZATION (1991=1000)

	SUNDAY 13/11/2022	MONDAY 14/11/2022	% CHANGE	
			DAY BEFORE	YTD
GENERAL	4657.7	4628.4	-0.63%	15.56%
BANKS	6601.0	6573.7	-0.41%	0.11%
INSURANCE	1366.3	1364.7	-0.12%	2.74%
SERVICES	822.2	819.6	-0.33%	4.75%
INDUSTRY	6864.8	6798.7	-0.96%	44.64%

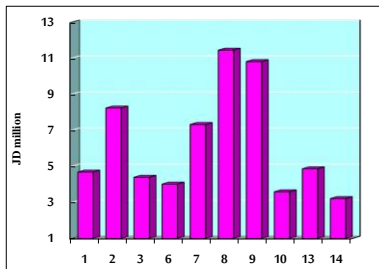
STOCK PRICE MARKET INDEX WEIGHTED BY FREE FLOAT MARKET CAP. (2012=1000)

	SUNDAY 13/11/2022	MONDAY 14/11/2022	% CHANGE	
			DAY BEFORE	YTD
FIRST MARKET	1383.9	1373.2	-0.77%	19.93%
SECOND MARKET	772.3	769.9	-0.30%	-17.79%

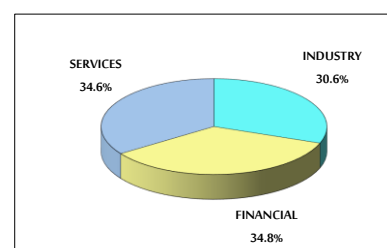
MARKET CAPITALIZATION (JD)

	17,743,970,546	17,633,094,147	-0.62%	13.79%
--	----------------	----------------	--------	--------

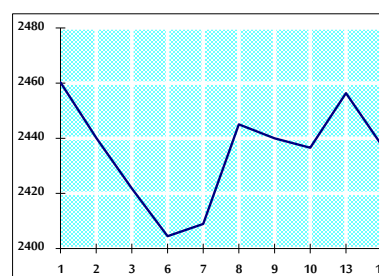
VALUE TRADED FROM 1/11 TO 14/11/2022



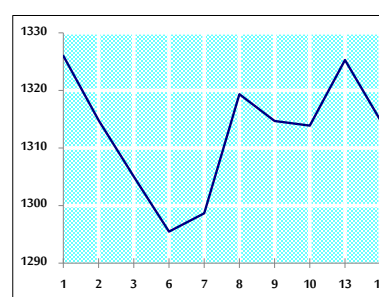
VALUE TRADED BY SECTOR MONDAY 14/11/2022



GENERAL FREE FLOAT PRICE INDEX FROM 1/11 TO 14/11/2022



ASE20 FREE FLOAT PRICE INDEX FROM 1/11 TO 14/11/2022



GENERAL PRICE INDEX FROM 1/11 TO 14/11/2022

