

Daily Summary for Amman Stock Exchange

VALUE TRADED (JD)

	2021	2022	NET CHANGE	CHANGE (%)
Daily	8,274,657	3,383,409	-4,891,248	-59.11%
Cumulative (1/11-16/11)	74,726,915	71,393,786	-3,333,129	-4.46%
Cumulative (2/1-16/11)	1,745,836,875	1,764,696,367	18,859,492	1.08%

NO. OF SHARES TRADED

	2021	2022	NET CHANGE	CHANGE (%)
Daily	5,494,698	3,676,650	-1,818,048	-33.09%
Cumulative (1/11-16/11)	61,188,628	58,017,987	-3,170,641	-5.18%
Cumulative (2/1-16/11)	1,367,864,815	1,033,428,451	-334,436,364	-24.45%

NO. OF TRANSACTIONS

	2021	2022	NET CHANGE	CHANGE (%)
Daily	3,455	1,831	-1,624	-47.00%
Cumulative (1/11-16/11)	42,029	26,360	-15,669	-37.28%
Cumulative (2/1-16/11)	719,366	665,889	-53,477	-7.43%

SOME FINANCIAL RATIOS FOR THE ASE (16/11/2022)

SECTOR	P/E	P/BV	DIVIDEND YIELD (%)	TURNOVER (%)
FINANCIAL	14.345	0.859	4.799	0.063
SERVICES	18.246	1.400	4.144	0.071
INDUSTRY	11.269	2.574	4.450	0.025
OVERALL	13.057	1.236	4.645	0.060

STOCK PRICE INDEX WEIGHTED BY FREE FLOAT MARKET CAPITALIZATION (1999=1000)

	TUESDAY 15/11/2022	WEDNESDAY 16/11/2022	% CHANGE	
			DAY BEFORE	YTD
GENERAL	2443.8	2447.1	0.14%	15.50%
FINANCIAL	2644.2	2646.7	0.10%	1.62%
SERVICES	1673.3	1677.3	0.24%	26.36%
INDUSTRY	5214.8	5221.5	0.13%	42.43%

STOCK PRICE INDEX WEIGHTED BY FREE FLOAT MARKET CAPITALIZATION ASE20 (2014=1000)

	1318.5	1320.2	0.13%	22.89%
--	--------	--------	-------	--------

Total Return Index ASETR (2021=1074)

	1401.7	1403.5	0.13%	30.64%
--	--------	--------	-------	--------

STOCK PRICE INDEX WEIGHTED BY MARKET CAPITALIZATION (1991=1000)

	TUESDAY 15/11/2022	WEDNESDAY 16/11/2022	% CHANGE	
			DAY BEFORE	YTD
GENERAL	4644.9	4661.3	0.35%	16.38%
BANKS	6595.9	6628.6	0.50%	0.95%
INSURANCE	1364.2	1366.1	0.14%	2.84%
SERVICES	819.0	819.6	0.08%	4.76%
INDUSTRY	6833.9	6853.1	0.28%	45.80%

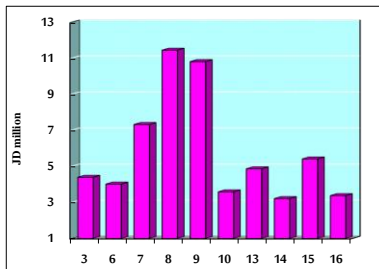
STOCK PRICE MARKET INDEX WEIGHTED BY FREE FLOAT MARKET CAP. (2012=1000)

	TUESDAY 15/11/2022	WEDNESDAY 16/11/2022	% CHANGE	
			DAY BEFORE	YTD
FIRST MARKET	1376.5	1378.2	0.12%	20.37%
SECOND MARKET	768.1	769.9	0.24%	-17.79%

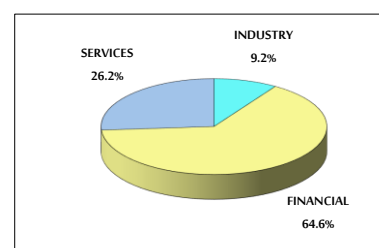
MARKET CAPITALIZATION (JD)

	17,693,460,506	17,753,762,375	0.34%	14.57%
--	----------------	----------------	-------	--------

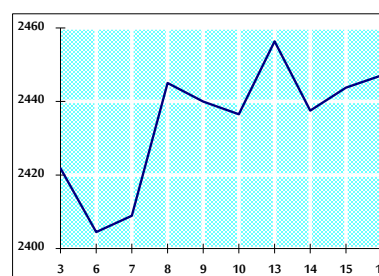
VALUE TRADED FROM 3/11 TO 16/11/2022



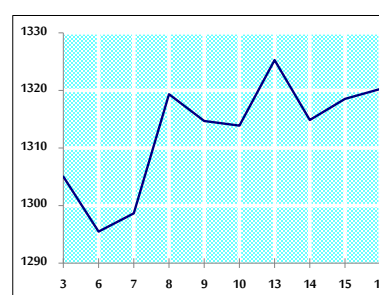
VALUE TRADED BY SECTOR WEDNESDAY 16/11/2022



GENERAL FREE FLOAT PRICE INDEX FROM 3/11 TO 16/11/2022



ASE20 FREE FLOAT PRICE INDEX FROM 3/11 TO 16/11/2022



GENERAL PRICE INDEX FROM 3/11 TO 16/11/2022

