

## Daily Summary for Amman Stock Exchange

### VALUE TRADED (JD)

	2021	2022	NET CHANGE	CHANGE (%)
Daily	5,233,499	3,571,962	-1,661,537	-31.75%
Cumulative (1/11-17/11)	79,960,414	74,965,748	-4,994,666	-6.25%
Cumulative (2/1-17/11)	1,751,070,374	1,768,268,329	17,197,955	0.98%

### NO. OF SHARES TRADED

	2021	2022	NET CHANGE	CHANGE (%)
Daily	4,804,105	3,222,696	-1,581,409	-32.92%
Cumulative (1/11-17/11)	65,992,733	61,240,683	-4,752,050	-7.20%
Cumulative (2/1-17/11)	1,372,668,920	1,036,651,147	-336,017,773	-24.48%

### NO. OF TRANSACTIONS

	2021	2022	NET CHANGE	CHANGE (%)
Daily	3,410	2,438	-972	-28.50%
Cumulative (1/11-17/11)	45,439	28,798	-16,641	-36.62%
Cumulative (2/1-17/11)	722,776	668,327	-54,449	-7.53%

### SOME FINANCIAL RATIOS FOR THE ASE (17/11/2022)

SECTOR	P/E	P/BV	DIVIDEND YIELD (%)	TURNOVER (%)
FINANCIAL	14.425	0.864	4.773	0.040
SERVICES	18.399	1.412	4.110	0.105
INDUSTRY	11.339	2.590	4.423	0.037
OVERALL	13.139	1.244	4.616	0.053

### STOCK PRICE INDEX WEIGHTED BY FREE FLOAT MARKET CAPITALIZATION (1999=1000)

	WEDNESDAY 16/11/2022	THURSDAY 17/11/2022	% CHANGE	
			DAY BEFORE	YTD
GENERAL	2447.1	2465.0	0.73%	16.35%
FINANCIAL	2646.7	2663.4	0.63%	2.26%
SERVICES	1677.3	1692.6	0.91%	27.51%
INDUSTRY	5221.5	5259.5	0.73%	43.47%

### STOCK PRICE INDEX WEIGHTED BY FREE FLOAT MARKET CAPITALIZATION ASE20 (2014=1000)

	1320.2	1330.6	0.78%	23.85%
--	--------	--------	-------	--------

### Total Return Index ASETR (2021=1074)

	1403.5	1414.5	0.78%	31.66%
--	--------	--------	-------	--------

### STOCK PRICE INDEX WEIGHTED BY MARKET CAPITALIZATION (1991=1000)

	WEDNESDAY 16/11/2022	THURSDAY 17/11/2022	% CHANGE	
			DAY BEFORE	YTD
GENERAL	4661.3	4690.6	0.63%	17.11%
BANKS	6628.6	6671.6	0.65%	1.60%
INSURANCE	1366.1	1362.5	-0.26%	2.57%
SERVICES	819.6	823.6	0.49%	5.27%
INDUSTRY	6853.1	6899.4	0.68%	46.78%

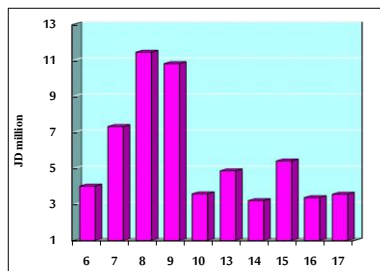
### STOCK PRICE MARKET INDEX WEIGHTED BY FREE FLOAT MARKET CAP. (2012=1000)

	WEDNESDAY 16/11/2022	THURSDAY 17/11/2022	% CHANGE	
			DAY BEFORE	YTD
FIRST MARKET	1378.2	1388.0	0.71%	21.23%
SECOND MARKET	769.9	776.8	0.89%	-17.06%

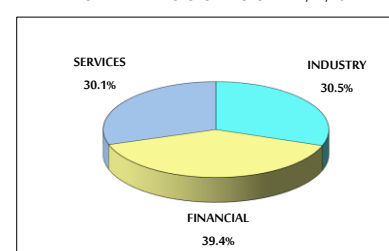
### MARKET CAPITALIZATION (JD)

	17,753,762,375	17,863,109,020	0.62%	15.28%
--	----------------	----------------	-------	--------

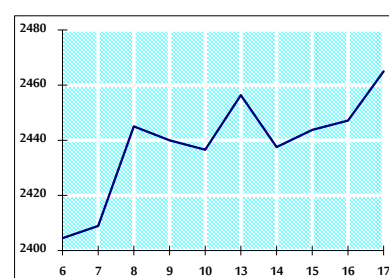
### VALUE TRADED FROM 6/11 TO 17/11/2022



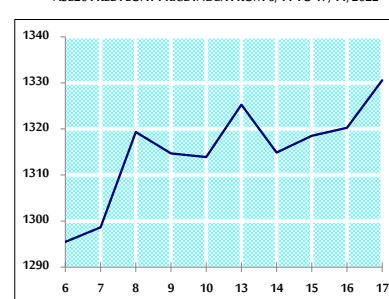
### VALUE TRADED BY SECTOR THURSDAY 17/11/2022



### GENERAL FREE FLOAT PRICE INDEX FROM 6/11 TO 17/11/2022



### ASE20 FREE FLOAT PRICE INDEX FROM 6/11 TO 17/11/2022



### GENERAL PRICE INDEX FROM 6/11 TO 17/11/2022

