

Daily Summary for Amman Stock Exchange

VALUE TRADED (JD)

	2021	2022	NET CHANGE	CHANGE (%)
Daily	4,031,196	3,217,184	-814,012	-20.19%
Cumulative (1/11-20/11)	83,991,610	78,182,932	-5,808,678	-6.92%
Cumulative (2/1-20/11)	1,755,101,570	1,771,485,513	16,383,943	0.93%

NO. OF SHARES TRADED

	2021	2022	NET CHANGE	CHANGE (%)
Daily	4,470,186	2,443,483	-2,026,703	-45.34%
Cumulative (1/11-20/11)	70,462,919	63,684,166	-6,778,753	-9.62%
Cumulative (2/1-20/11)	1,377,139,106	1,039,094,630	-338,044,476	-24.55%

NO. OF TRANSACTIONS

	2021	2022	NET CHANGE	CHANGE (%)
Daily	3,192	1,796	-1,396	-43.73%
Cumulative (1/11-20/11)	48,631	30,594	-18,037	-37.09%
Cumulative (2/1-20/11)	725,968	670,123	-55,845	-7.69%

SOME FINANCIAL RATIOS FOR THE ASE (20/11/2022)

SECTOR	P/E	P/BV	DIVIDEND YIELD (%)	TURNOVER (%)
FINANCIAL	14.387	0.862	4.785	0.026
SERVICES	18.249	1.400	4.143	0.050
INDUSTRY	11.368	2.596	4.412	0.108
OVERALL	13.118	1.242	4.623	0.040

STOCK PRICE INDEX WEIGHTED BY FREE FLOAT MARKET CAPITALIZATION (1999=1000)

	THURSDAY 17/11/2022	SUNDAY 20/11/2022	% CHANGE	
			DAY BEFORE	YTD
GENERAL	2465.0	2458.8	-0.25%	16.05%
FINANCIAL	2663.4	2659.0	-0.16%	2.09%
SERVICES	1692.6	1679.9	-0.75%	26.55%
INDUSTRY	5259.5	5270.8	0.21%	43.78%

STOCK PRICE INDEX WEIGHTED BY FREE FLOAT MARKET CAPITALIZATION ASE20 (2014=1000)

	1330.6	1327.0	-0.27%	23.52%
--	--------	--------	--------	--------

Total Return Index ASETR (2021=1074)

	1414.5	1410.7	-0.27%	31.31%
--	--------	--------	--------	--------

STOCK PRICE INDEX WEIGHTED BY MARKET CAPITALIZATION (1991=1000)

	THURSDAY 17/11/2022	SUNDAY 20/11/2022	% CHANGE	
			DAY BEFORE	YTD
GENERAL	4690.6	4683.0	-0.16%	16.92%
BANKS	6671.6	6651.4	-0.30%	1.29%
INSURANCE	1362.5	1366.4	0.28%	2.86%
SERVICES	823.6	817.7	-0.72%	4.52%
INDUSTRY	6899.4	6909.3	0.14%	46.99%

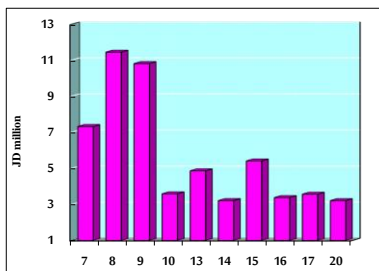
STOCK PRICE MARKET INDEX WEIGHTED BY FREE FLOAT MARKET CAP. (2012=1000)

	THURSDAY 17/11/2022	SUNDAY 20/11/2022	% CHANGE	
			DAY BEFORE	YTD
FIRST MARKET	1388.0	1384.7	-0.24%	20.94%
SECOND MARKET	776.8	775.8	-0.13%	-17.16%

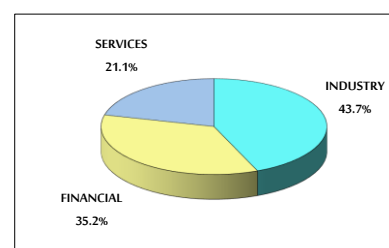
MARKET CAPITALIZATION (JD)

	17,863,109,020	17,836,823,789	-0.15%	15.11%
--	----------------	----------------	--------	--------

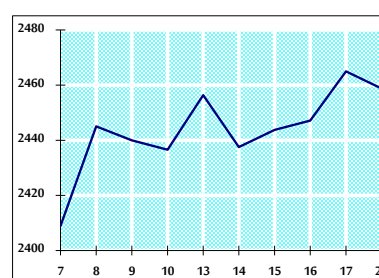
VALUE TRADED FROM 7/11 TO 20/11/2022



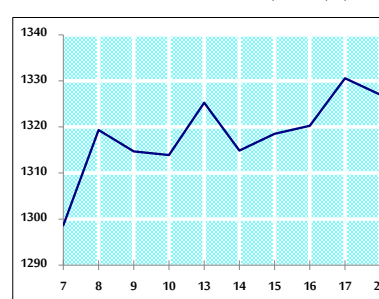
VALUE TRADED BY SECTOR SUNDAY 20/11/2022



GENERAL FREE FLOAT PRICE INDEX FROM 7/11 TO 20/11/2022



ASE20 FREE FLOAT PRICE INDEX FROM 7/11 TO 20/11/2022



GENERAL PRICE INDEX FROM 7/11 TO 20/11/2022

