

Daily Summary for Amman Stock Exchange

VALUE TRADED (JD)

	2021	2022	NET CHANGE	CHANGE (%)
Daily	3,280,638	4,235,578	954,940	29.11%
Cumulative (1/12-5/12)	13,437,744	14,113,665	675,921	5.03%
Cumulative (2/1-5/12)	1,818,389,886	1,825,549,008	7,159,122	0.39%

NO. OF SHARES TRADED

	2021	2022	NET CHANGE	CHANGE (%)
Daily	3,043,825	4,752,857	1,709,032	56.15%
Cumulative (1/12-5/12)	11,425,414	14,774,385	3,348,971	29.31%
Cumulative (2/1-5/12)	1,431,294,162	1,090,551,845	-340,742,317	-23.81%

NO. OF TRANSACTIONS

	2021	2022	NET CHANGE	CHANGE (%)
Daily	2,802	2,583	-219	-7.82%
Cumulative (1/12-5/12)	8,837	7,427	-1,410	-15.96%
Cumulative (2/1-5/12)	762,483	699,610	-62,873	-8.25%

SOME FINANCIAL RATIOS FOR THE ASE (5/12/2022)

SECTOR	P/E	P/BV	DIVIDEND YIELD (%)	TURNOVER (%)
FINANCIAL	14.618	0.876	4.710	0.071
SERVICES	18.860	1.447	4.009	0.101
INDUSTRY	11.442	2.613	4.383	0.082
OVERALL	13.319	1.261	4.553	0.078

STOCK PRICE INDEX WEIGHTED BY FREE FLOAT MARKET CAPITALIZATION (1999=1000)

	SUNDAY 04/12/2022	MONDAY 05/12/2022	% CHANGE	
			DAY BEFORE	YTD
GENERAL	2501.0	2505.7	0.19%	18.27%
FINANCIAL	2686.7	2688.8	0.08%	3.24%
SERVICES	1745.9	1755.0	0.52%	32.21%
INDUSTRY	5310.5	5315.1	0.09%	44.99%

STOCK PRICE INDEX WEIGHTED BY FREE FLOAT MARKET CAPITALIZATION ASE20 (2014=1000)

	1346.3	1348.9	0.19%	25.55%
--	--------	--------	-------	--------

Total Return Index ASETR (2021=1074)

	1431.2	1433.9	0.19%	33.47%
--	--------	--------	-------	--------

STOCK PRICE INDEX WEIGHTED BY MARKET CAPITALIZATION (1991=1000)

	SUNDAY 04/12/2022	MONDAY 05/12/2022	% CHANGE	
			DAY BEFORE	YTD
GENERAL	4745.9	4754.8	0.19%	18.71%
BANKS	6764.3	6774.0	0.14%	3.16%
INSURANCE	1353.3	1350.7	-0.19%	1.68%
SERVICES	834.9	835.6	0.08%	6.80%
INDUSTRY	6964.9	6984.3	0.28%	48.59%

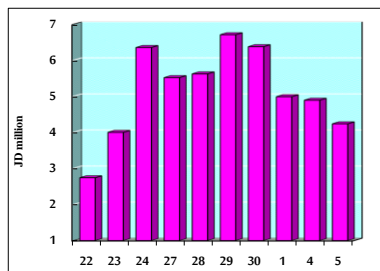
STOCK PRICE MARKET INDEX WEIGHTED BY FREE FLOAT MARKET CAP. (2012=1000)

	SUNDAY 04/12/2022	MONDAY 05/12/2022	% CHANGE	
			DAY BEFORE	YTD
FIRST MARKET	1409.4	1412.2	0.20%	23.34%
SECOND MARKET	783.2	783.7	0.06%	-16.32%

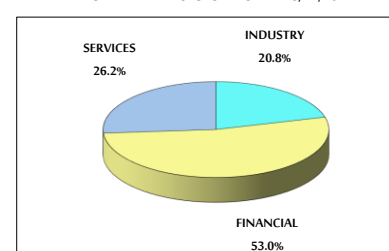
MARKET CAPITALIZATION (JD)

	18,068,965,747	18,101,454,780	0.18%	16.82%
--	----------------	----------------	-------	--------

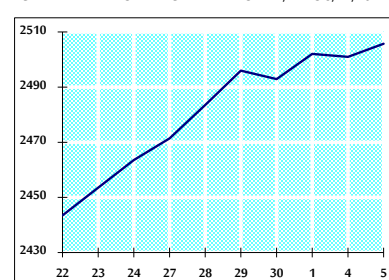
VALUE TRADED FROM 22/11 TO 5/12/2022



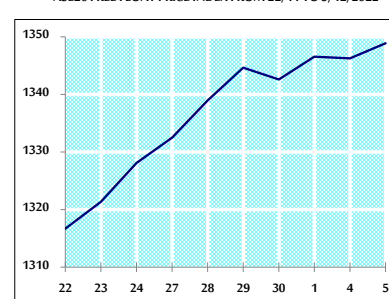
VALUE TRADED BY SECTOR MONDAY 5/12/2022



GENERAL FREE FLOAT PRICE INDEX FROM 22/11 TO 5/12/2022



ASE20 FREE FLOAT PRICE INDEX FROM 22/11 TO 5/12/2022



GENERAL PRICE INDEX FROM 22/11 TO 5/12/2022

