

## Daily Summary for Amman Stock Exchange

### VALUE TRADED (JD)

	2021	2022	NET CHANGE	CHANGE (%)
Daily	11,233,293	8,114,039	-3,119,254	-27.77%
Cumulative (3/4-3/4)	11,233,293	8,114,039	-3,119,254	-27.77%
Cumulative (2/1-3/4)	536,806,769	395,062,080	-141,744,689	-26.41%

### NO. OF SHARES TRADED

	2021	2022	NET CHANGE	CHANGE (%)
Daily	8,634,524	4,774,560	-3,859,964	-44.70%
Cumulative (3/4-3/4)	8,634,524	4,774,560	-3,859,964	-44.70%
Cumulative (2/1-3/4)	495,349,033	276,979,960	-218,369,073	-44.08%

### NO. OF TRANSACTIONS

	2021	2022	NET CHANGE	CHANGE (%)
Daily	3,920	2,101	-1,819	-46.40%
Cumulative (3/4-3/4)	3,920	2,101	-1,819	-46.40%
Cumulative (2/1-3/4)	189,057	173,642	-15,415	-8.15%

### SOME FINANCIAL RATIOS FOR THE ASE (3/4/2022)

SECTOR	P/E	P/BV	DIVIDEND YIELD (%)	TURNOVER (%)
FINANCIAL	13.556	0.813	5.044	0.096
SERVICES	16.001	1.195	3.789	0.042
INDUSTRY	9.993	2.240	5.011	0.021
OVERALL	11.884	1.118	4.990	0.076

### STOCK PRICE INDEX WEIGHTED BY FREE FLOAT MARKET CAPITALIZATION (1999=1000)

	THURSDAY 31/03/2022	SUNDAY 03/04/2022	% CHANGE	
			DAY BEFORE	YTD
GENERAL	2228.1	2215.1	-0.58%	4.55%
FINANCIAL	2621.8	2577.1	-1.70%	-1.05%
SERVICES	1332.3	1330.9	-0.10%	0.27%
INDUSTRY	4591.9	4696.1	2.27%	28.10%

### STOCK PRICE INDEX WEIGHTED BY FREE FLOAT MARKET CAPITALIZATION ASE20 (2014=1000)

	1176.7	1167.5	-0.78%	8.67%
--	--------	--------	--------	-------

### Total Return Index ASETR (2021=1074)

	1188.1	1193.5	0.46%	11.09%
--	--------	--------	-------	--------

### STOCK PRICE INDEX WEIGHTED BY MARKET CAPITALIZATION (1991=1000)

	THURSDAY 31/03/2022	SUNDAY 03/04/2022	% CHANGE	
			DAY BEFORE	YTD
GENERAL	4291.1	4266.5	-0.57%	6.52%
BANKS	6517.6	6344.7	-2.65%	-3.38%
INSURANCE	1343.2	1342.4	-0.06%	1.06%
SERVICES	752.0	751.3	-0.10%	-3.98%
INDUSTRY	5848.2	5957.3	1.87%	26.74%

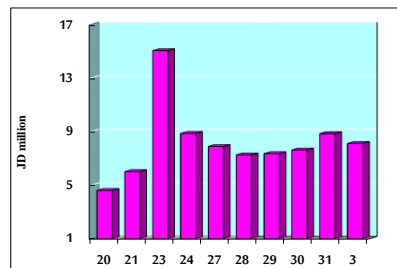
### STOCK PRICE MARKET INDEX WEIGHTED BY FREE FLOAT MARKET CAP. (2012=1000)

	THURSDAY 31/03/2022	SUNDAY 03/04/2022	% CHANGE	
			DAY BEFORE	YTD
FIRST MARKET	1238.2	1229.7	-0.69%	7.40%
SECOND MARKET	807.3	804.4	-0.36%	-14.12%

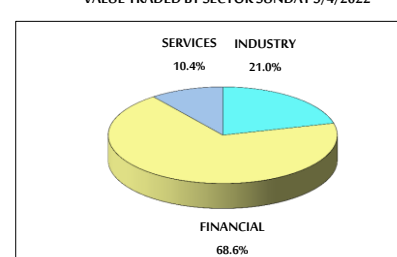
### MARKET CAPITALIZATION (JD)

	16,504,545,723	16,414,899,748	-0.54%	5.93%
--	----------------	----------------	--------	-------

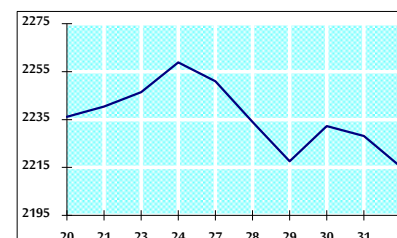
### VALUE TRADED FROM 20/3 TO 3/4/2022



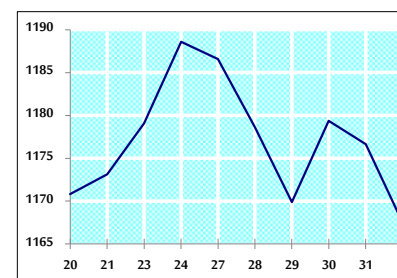
### VALUE TRADED BY SECTOR SUNDAY 3/4/2022



### GENERAL FREE FLOAT PRICE INDEX FROM 20/3 TO 3/4/2022



### ASE20 FREE FLOAT PRICE INDEX FROM 20/3 TO 3/4/2022



### GENERAL PRICE INDEX FROM 20/3 TO 3/4/2022

