

Daily Summary for Amman Stock Exchange

VALUE TRADED (JD)

	2021	2022	NET CHANGE	CHANGE (%)
Daily	6,218,627	7,944,182	1,725,555	27.75%
Cumulative (3/4-6/4)	31,472,217	26,003,035	-5,469,182	-17.38%
Cumulative (2/1-6/4)	557,045,693	412,951,076	-144,094,617	-25.87%

NO. OF SHARES TRADED

	2021	2022	NET CHANGE	CHANGE (%)
Daily	6,506,349	4,047,665	-2,458,684	-37.79%
Cumulative (3/4-6/4)	28,493,468	13,351,577	-15,141,891	-53.14%
Cumulative (2/1-6/4)	515,207,977	285,556,977	-229,651,000	-44.57%

NO. OF TRANSACTIONS

	2021	2022	NET CHANGE	CHANGE (%)
Daily	3,215	3,051	-164	-5.10%
Cumulative (3/4-6/4)	14,232	9,760	-4,472	-31.42%
Cumulative (2/1-6/4)	199,369	181,301	-18,068	-9.06%

SOME FINANCIAL RATIOS FOR THE ASE (6/4/2022)

SECTOR	P/E	P/BV	DIVIDEND YIELD (%)	TURNOVER (%)
FINANCIAL	13.548	0.813	5.044	0.053
SERVICES	15.787	1.185	4.233	0.103
INDUSTRY	11.130	2.495	4.499	0.065
OVERALL	12.371	1.164	4.847	0.065

STOCK PRICE INDEX WEIGHTED BY FREE FLOAT MARKET CAPITALIZATION (1999=1000)

	TUESDAY 05/04/2022	WEDNESDAY 06/04/2022	% CHANGE	
			DAY BEFORE	YTD
GENERAL	2229.2	2258.6	1.31%	6.60%
FINANCIAL	2570.9	2582.3	0.44%	-0.85%
SERVICES	1332.2	1328.8	-0.26%	0.10%
INDUSTRY	4861.9	5108.8	5.08%	39.36%

STOCK PRICE INDEX WEIGHTED BY FREE FLOAT MARKET CAPITALIZATION ASE20 (2014=1000)

	1179.4	1196.1	1.41%	11.33%
--	--------	--------	-------	--------

Total Return Index ASETR (2021=1074)

	1205.7	1222.7	1.41%	13.81%
--	--------	--------	-------	--------

STOCK PRICE INDEX WEIGHTED BY MARKET CAPITALIZATION (1991=1000)

	TUESDAY 05/04/2022	WEDNESDAY 06/04/2022	% CHANGE	
			DAY BEFORE	YTD
GENERAL	4349.0	4443.1	2.16%	10.93%
BANKS	6344.8	6355.0	0.16%	-3.22%
INSURANCE	1328.9	1330.6	0.13%	0.17%
SERVICES	745.0	740.7	-0.57%	-5.33%
INDUSTRY	6267.8	6600.0	5.30%	40.41%

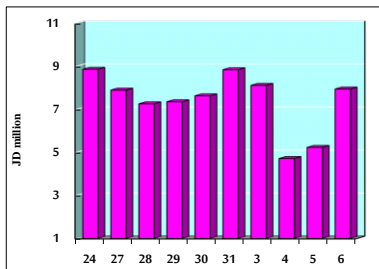
STOCK PRICE MARKET INDEX WEIGHTED BY FREE FLOAT MARKET CAP. (2012=1000)

	TUESDAY 05/04/2022	WEDNESDAY 06/04/2022	% CHANGE	
			DAY BEFORE	YTD
FIRST MARKET	1240.5	1257.2	1.35%	9.81%
SECOND MARKET	793.1	794.6	0.18%	-15.16%

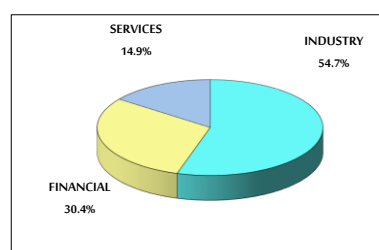
MARKET CAPITALIZATION (JD)

	16,710,308,755	17,050,784,774	2.04%	10.04%
--	----------------	----------------	-------	--------

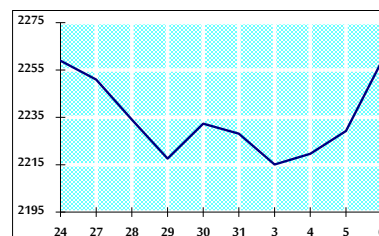
VALUE TRADED FROM 24/3 TO 6/4/2022



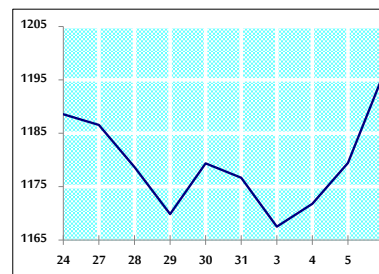
VALUE TRADED BY SECTOR WEDNESDAY 6/4/2022



GENERAL FREE FLOAT PRICE INDEX FROM 24/3 TO 6/4/2022



ASE20 FREE FLOAT PRICE INDEX FROM 24/3 TO 6/4/2022



GENERAL PRICE INDEX FROM 24/3 TO 6/4/2022

