

Daily Summary for Amman Stock Exchange

VALUE TRADED (JD)

	2021	2022	NET CHANGE	CHANGE (%)
Daily	8,421,459	15,469,578	7,048,119	83.69%
Cumulative (8/5-10/5)	23,023,404	46,862,075	23,838,671	103.54%
Cumulative (2/1-10/5)	681,438,979	610,308,278	-71,130,701	-10.44%

NO. OF SHARES TRADED

	2021	2022	NET CHANGE	CHANGE (%)
Daily	5,293,774	6,426,388	1,132,614	21.40%
Cumulative (8/5-10/5)	18,949,674	17,842,559	-1,107,115	-5.84%
Cumulative (2/1-10/5)	631,299,090	370,038,094	-261,260,996	-41.38%

NO. OF TRANSACTIONS

	2021	2022	NET CHANGE	CHANGE (%)
Daily	4,140	4,812	672	16.23%
Cumulative (8/5-10/5)	11,717	12,592	875	7.47%
Cumulative (2/1-10/5)	256,233	248,336	-7,897	-3.08%

SOME FINANCIAL RATIOS FOR THE ASE (10/5/2022)

SECTOR	P/E	P/BV	DIVIDEND YIELD (%)	TURNOVER (%)
FINANCIAL	14.492	0.870	4.768	0.060
SERVICES	17.622	1.340	4.320	0.262
INDUSTRY	12.783	2.866	3.921	0.078
OVERALL	13.763	1.294	4.455	0.103

STOCK PRICE INDEX WEIGHTED BY FREE FLOAT MARKET CAPITALIZATION (1999=1000)

	MONDAY 09/05/2022	TUESDAY 10/05/2022	% CHANGE	
			DAY BEFORE	YTD
GENERAL	2470.1	2489.0	0.77%	17.48%
FINANCIAL	2716.4	2723.2	0.25%	4.56%
SERVICES	1541.2	1595.2	3.50%	20.18%
INDUSTRY	5717.9	5662.4	-0.97%	54.46%

STOCK PRICE INDEX WEIGHTED BY FREE FLOAT MARKET CAPITALIZATION ASE20 (2014=1000)

	1322.9	1335.0	0.91%	24.26%
--	--------	--------	-------	--------

Total Return Index ASETR (2021=1074)

	1406.4	1419.1	0.91%	32.09%
--	--------	--------	-------	--------

STOCK PRICE INDEX WEIGHTED BY MARKET CAPITALIZATION (1991=1000)

	MONDAY 09/05/2022	TUESDAY 10/05/2022	% CHANGE	
			DAY BEFORE	YTD
GENERAL	4895.1	4928.9	0.69%	23.06%
BANKS	6830.6	6847.6	0.25%	4.28%
INSURANCE	1365.3	1355.5	-0.72%	2.04%
SERVICES	762.9	765.5	0.34%	-2.16%
INDUSTRY	7615.2	7707.7	1.22%	63.98%

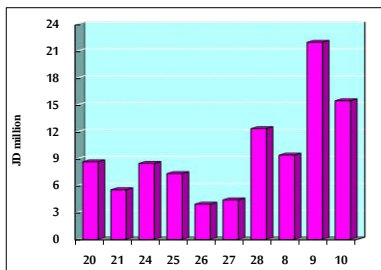
STOCK PRICE MARKET INDEX WEIGHTED BY FREE FLOAT MARKET CAP. (2012=1000)

	MONDAY 09/05/2022	TUESDAY 10/05/2022	% CHANGE	
			DAY BEFORE	YTD
FIRST MARKET	1384.3	1395.9	0.84%	21.92%
SECOND MARKET	802.9	807.4	0.56%	-13.79%

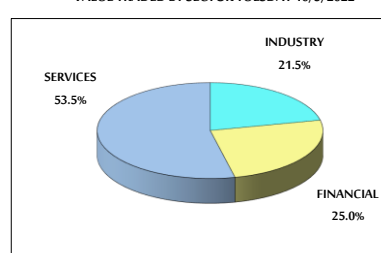
MARKET CAPITALIZATION (JD)

	18,669,878,908	18,789,323,790	0.64%	21.26%
--	----------------	----------------	-------	--------

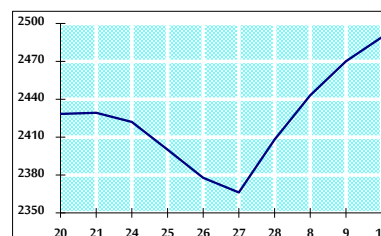
VALUE TRADED FROM 20/4 TO 10/5/2022



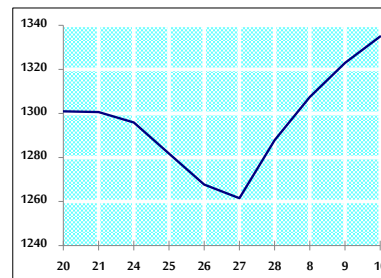
VALUE TRADED BY SECTOR TUESDAY 10/5/2022



GENERAL FREE FLOAT PRICE INDEX FROM 20/4 TO 10/5/2022



ASE20 FREE FLOAT PRICE INDEX FROM 20/4 TO 10/5/2022



GENERAL PRICE INDEX FROM 20/4 TO 10/5/2022

