

Daily Summary for Amman Stock Exchange

VALUE TRADED (JD)

	2021	2022	NET CHANGE	CHANGE (%)
Daily	5,911,764	8,826,547	2,914,783	49.30%
Cumulative (3/7-6/7)	28,720,904	51,577,408	22,856,504	79.58%
Cumulative (2/1-6/7)	1,157,811,157	1,021,958,066	-135,853,091	-11.73%

NO. OF SHARES TRADED

	2021	2022	NET CHANGE	CHANGE (%)
Daily	3,712,995	4,300,168	587,173	15.81%
Cumulative (3/7-6/7)	17,696,141	27,229,522	9,533,381	53.87%
Cumulative (2/1-6/7)	923,991,334	610,003,755	-313,987,579	-33.98%

NO. OF TRANSACTIONS

	2021	2022	NET CHANGE	CHANGE (%)
Daily	3,206	3,742	536	16.72%
Cumulative (3/7-6/7)	13,282	19,250	5,968	44.93%
Cumulative (2/1-6/7)	440,641	394,884	-45,757	-10.38%

SOME FINANCIAL RATIOS FOR THE ASE (6/7/2022)

SECTOR	P/E	P/BV	DIVIDEND YIELD (%)	TURNOVER (%)
FINANCIAL	14.549	0.880	4.719	0.061
SERVICES	18.724	1.423	4.066	0.102
INDUSTRY	12.999	2.969	3.858	0.067
OVERALL	13.966	1.322	4.354	0.070

STOCK PRICE INDEX WEIGHTED BY FREE FLOAT MARKET CAPITALIZATION (1999=1000)

	TUESDAY 05/07/2022	WEDNESDAY 06/07/2022	% CHANGE	
			DAY BEFORE	YTD
GENERAL	2538.9	2547.6	0.34%	20.25%
FINANCIAL	2718.9	2707.5	-0.42%	3.96%
SERVICES	1714.7	1741.4	1.55%	31.18%
INDUSTRY	5725.2	5783.7	1.02%	57.77%

STOCK PRICE INDEX WEIGHTED BY FREE FLOAT MARKET CAPITALIZATION ASE20 (2014=1000)

	1362.1	1366.3	0.31%	27.17%
--	--------	--------	-------	--------

Total Return Index ASETR (2021=1074)

	1448.0	1452.5	0.31%	35.19%
--	--------	--------	-------	--------

STOCK PRICE INDEX WEIGHTED BY MARKET CAPITALIZATION (1991=1000)

	TUESDAY 05/07/2022	WEDNESDAY 06/07/2022	% CHANGE	
			DAY BEFORE	YTD
GENERAL	5035.6	5045.7	0.20%	25.98%
BANKS	6983.0	6929.4	-0.77%	5.53%
INSURANCE	1267.5	1267.9	0.03%	-4.55%
SERVICES	803.5	809.0	0.69%	3.41%
INDUSTRY	7846.5	7929.9	1.06%	68.70%

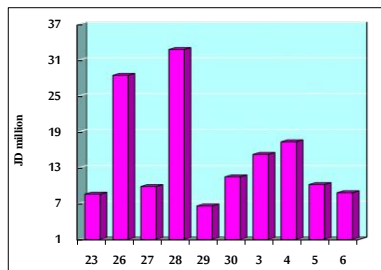
STOCK PRICE MARKET INDEX WEIGHTED BY FREE FLOAT MARKET CAP. (2012=1000)

	TUESDAY 05/07/2022	WEDNESDAY 06/07/2022	% CHANGE	
			DAY BEFORE	YTD
FIRST MARKET	1422.6	1427.7	0.35%	24.69%
SECOND MARKET	819.3	817.9	-0.17%	-12.67%

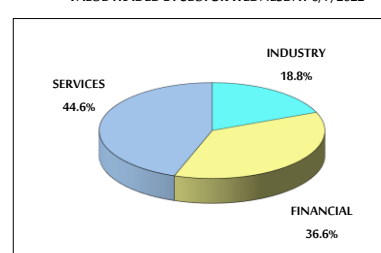
MARKET CAPITALIZATION (JD)

	19,112,559,364	19,149,436,949	0.19%	23.58%
--	----------------	----------------	-------	--------

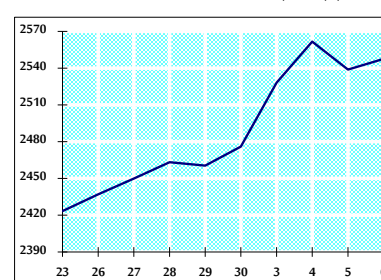
VALUE TRADED FROM 23/6 TO 6/7/2022



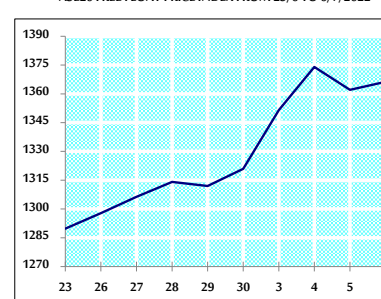
VALUE TRADED BY SECTOR WEDNESDAY 6/7/2022



GENERAL FREE FLOAT PRICE INDEX FROM 23/6 TO 6/7/2022



ASE20 FREE FLOAT PRICE INDEX FROM 23/6 TO 6/7/2022



GENERAL PRICE INDEX FROM 23/6 TO 6/7/2022

