

## Daily Summary for Amman Stock Exchange

### VALUE TRADED (JD)

	2021	2022	NET CHANGE	CHANGE (%)
Daily	6,004,588	10,116,797	4,112,209	68.48%
Cumulative (3/7-13/7)	43,051,017	72,079,900	29,028,883	67.43%
Cumulative (2/1-13/7)	1,172,141,270	1,042,460,558	-129,680,712	-11.06%

### NO. OF SHARES TRADED

	2021	2022	NET CHANGE	CHANGE (%)
Daily	4,106,643	5,111,543	1,004,900	24.47%
Cumulative (3/7-13/7)	27,362,400	36,506,481	9,144,081	33.42%
Cumulative (2/1-13/7)	933,657,593	619,280,714	-314,376,879	-33.67%

### NO. OF TRANSACTIONS

	2021	2022	NET CHANGE	CHANGE (%)
Daily	2,937	4,198	1,261	42.93%
Cumulative (3/7-13/7)	20,046	27,893	7,847	39.14%
Cumulative (2/1-13/7)	447,405	403,527	-43,878	-9.81%

### SOME FINANCIAL RATIOS FOR THE ASE (13/7/2022)

SECTOR	P/E	P/BV	DIVIDEND YIELD (%)	TURNOVER (%)
FINANCIAL	14.489	0.877	4.738	0.077
SERVICES	18.894	1.436	4.030	0.126
INDUSTRY	12.996	2.969	3.859	0.044
OVERALL	13.956	1.321	4.357	0.083

### STOCK PRICE INDEX WEIGHTED BY FREE FLOAT MARKET CAPITALIZATION (1999=1000)

	THURSDAY 07/07/2022	WEDNESDAY 13/07/2022	% CHANGE	
			DAY BEFORE	YTD
GENERAL	2568.9	2567.8	-0.04%	21.20%
FINANCIAL	2715.5	2720.8	0.19%	4.47%
SERVICES	1771.7	1766.6	-0.29%	33.08%
INDUSTRY	5843.4	5817.8	-0.44%	58.70%

### STOCK PRICE INDEX WEIGHTED BY FREE FLOAT MARKET CAPITALIZATION ASE20 (2014=1000)

	1378.9	1379.2	0.02%	28.37%
--	--------	--------	-------	--------

### Total Return Index ASETR (2021=1074)

	1465.9	1466.1	0.02%	36.46%
--	--------	--------	-------	--------

### STOCK PRICE INDEX WEIGHTED BY MARKET CAPITALIZATION (1991=1000)

	THURSDAY 07/07/2022	WEDNESDAY 13/07/2022	% CHANGE	
			DAY BEFORE	YTD
GENERAL	5074.9	5042.0	-0.65%	25.88%
BANKS	6929.5	6894.3	-0.51%	4.99%
INSURANCE	1269.3	1283.5	1.11%	-3.38%
SERVICES	817.1	819.6	0.30%	4.76%
INDUSTRY	8013.8	7927.0	-1.08%	68.64%

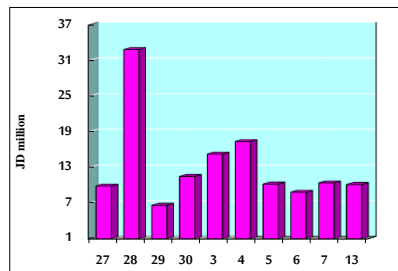
### STOCK PRICE MARKET INDEX WEIGHTED BY FREE FLOAT MARKET CAP. (2012=1000)

	THURSDAY 07/07/2022	WEDNESDAY 13/07/2022	% CHANGE	
			DAY BEFORE	YTD
FIRST MARKET	1440.1	1439.9	-0.02%	25.76%
SECOND MARKET	822.0	820.9	-0.13%	-12.35%

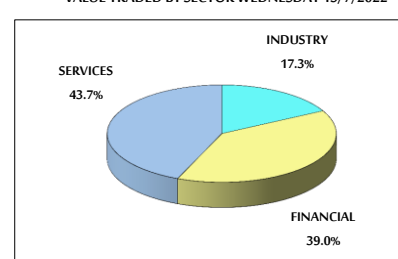
### MARKET CAPITALIZATION (JD)

	19,253,058,304	19,134,584,165	-0.62%	23.48%
--	----------------	----------------	--------	--------

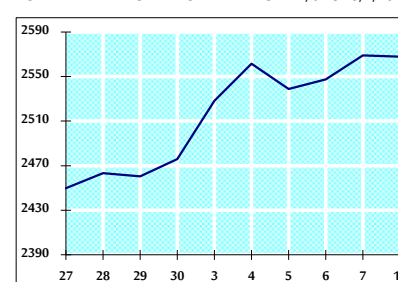
### VALUE TRADED FROM 27/6 TO 13/7/2022



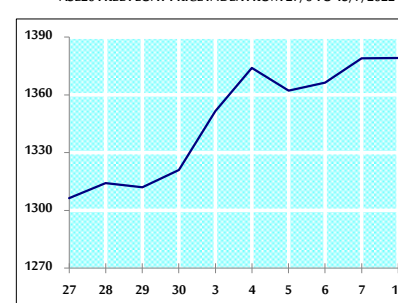
### VALUE TRADED BY SECTOR WEDNESDAY 13/7/2022



### GENERAL FREE FLOAT PRICE INDEX FROM 27/6 TO 13/7/2022



### ASE20 FREE FLOAT PRICE INDEX FROM 27/6 TO 13/7/2022



### GENERAL PRICE INDEX FROM 27/6 TO 13/7/2022

