

### Daily Summary for Amman Stock Exchange

VALUE TRADED (JD)

	2021	2022	NET CHANGE	CHANGE (%)
Daily	5,158,212	10,693,241	5,535,029	107.31%
Cumulative (3/7-14/7)	48,209,229	82,773,141	34,563,912	71.70%
Cumulative (2/1-14/7)	1,177,299,482	1,053,153,799	-124,145,683	-10.54%

NO. OF SHARES TRADED

	2021	2022	NET CHANGE	CHANGE (%)
Daily	4,070,524	6,025,982	1,955,458	48.04%
Cumulative (3/7-14/7)	31,432,924	42,532,463	11,099,539	35.31%
Cumulative (2/1-14/7)	937,728,117	625,306,696	-312,421,421	-33.32%

NO. OF TRANSACTIONS

	2021	2022	NET CHANGE	CHANGE (%)
Daily	2,551	4,179	1,628	63.82%
Cumulative (3/7-14/7)	22,597	32,072	9,475	41.93%
Cumulative (2/1-14/7)	449,956	407,706	-42,250	-9.39%

SOME FINANCIAL RATIOS FOR THE ASE (14/7/2022)

SECTOR	P/E	P/BV	DIVIDEND YIELD (%)	TURNOVER (%)
FINANCIAL	14.463	0.875	4.747	0.082
SERVICES	19.062	1.449	3.994	0.176
INDUSTRY	12.872	2.940	3.896	0.057
OVERALL	13.906	1.316	4.373	0.098

STOCK PRICE INDEX WEIGHTED BY FREE FLOAT MARKET CAPITALIZATION (1999=1000)

	WEDNESDAY 13/07/2022	THURSDAY 14/07/2022	% CHANGE	
			DAY BEFORE	YTD
GENERAL	2567.8	2575.2	0.29%	21.55%
FINANCIAL	2720.8	2728.3	0.28%	4.75%
SERVICES	1766.6	1784.8	1.04%	34.46%
INDUSTRY	5817.8	5775.6	-0.73%	57.55%

STOCK PRICE INDEX WEIGHTED BY FREE FLOAT MARKET CAPITALIZATION ASE20 (2014=1000)

	1379.2	1384.2	0.36%	28.84%
--	--------	--------	-------	--------

Total Return Index ASETR (2021=1074)

	1466.1	1471.4	0.36%	36.96%
--	--------	--------	-------	--------

STOCK PRICE INDEX WEIGHTED BY MARKET CAPITALIZATION (1991=1000)

	WEDNESDAY 13/07/2022	THURSDAY 14/07/2022	% CHANGE	
			DAY BEFORE	YTD
GENERAL	5042.0	5023.9	-0.36%	25.43%
BANKS	6894.3	6879.0	-0.22%	4.76%
INSURANCE	1283.5	1292.9	0.73%	-2.67%
SERVICES	819.6	827.9	1.01%	5.82%
INDUSTRY	7927.0	7856.9	-0.88%	67.15%

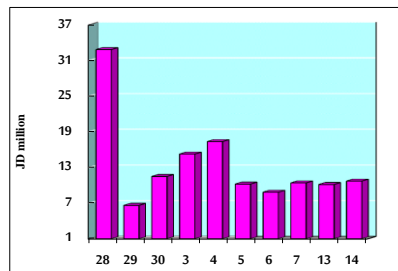
STOCK PRICE MARKET INDEX WEIGHTED BY FREE FLOAT MARKET CAP. (2012=1000)

	WEDNESDAY 13/07/2022	THURSDAY 14/07/2022	% CHANGE	
			DAY BEFORE	YTD
FIRST MARKET	1439.9	1445.2	0.37%	26.23%
SECOND MARKET	820.9	821.3	0.05%	-12.31%

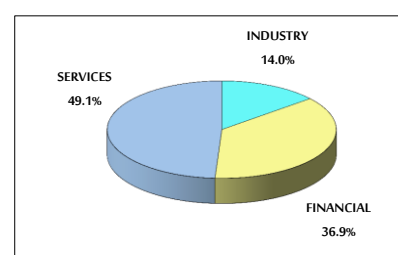
MARKET CAPITALIZATION (JD)

	19,134,584,165	19,069,521,660	-0.34%	23.06%
--	----------------	----------------	--------	--------

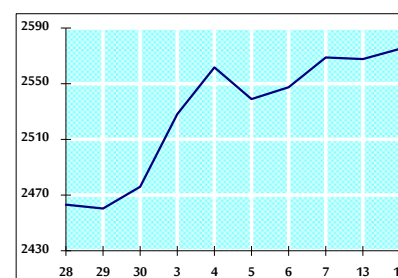
VALUE TRADED FROM 28/6 TO 14/7/2022



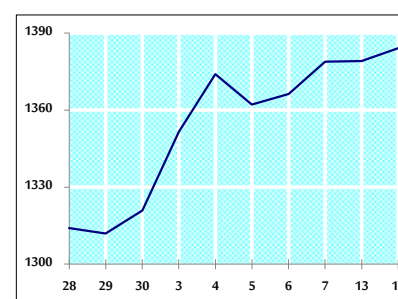
VALUE TRADED BY SECTOR THURSDAY 14/7/2022



GENERAL FREE FLOAT PRICE INDEX FROM 28/6 TO 14/7/2022



ASE20 FREE FLOAT PRICE INDEX FROM 28/6 TO 14/7/2022



GENERAL PRICE INDEX FROM 28/6 TO 14/7/2022

