

### Daily Summary for Amman Stock Exchange

VALUE TRADED (JD)

	2021	2022	NET CHANGE	CHANGE (%)
Daily	6,856,793	7,634,154	777,361	11.34%
Cumulative (3/7-18/7)	63,322,380	97,175,833	33,853,453	53.46%
Cumulative (2/1-18/7)	1,192,412,633	1,067,556,491	-124,856,142	-10.47%

NO. OF SHARES TRADED

	2021	2022	NET CHANGE	CHANGE (%)
Daily	4,383,430	4,572,574	189,144	4.31%
Cumulative (3/7-18/7)	42,348,773	51,396,013	9,047,240	21.36%
Cumulative (2/1-18/7)	948,643,966	634,170,246	-314,473,720	-33.15%

NO. OF TRANSACTIONS

	2021	2022	NET CHANGE	CHANGE (%)
Daily	3,315	4,085	770	23.23%
Cumulative (3/7-18/7)	28,417	39,974	11,557	40.67%
Cumulative (2/1-18/7)	455,776	415,608	-40,168	-8.81%

SOME FINANCIAL RATIOS FOR THE ASE (18/7/2022)

SECTOR	P/E	P/BV	DIVIDEND YIELD (%)	TURNOVER (%)
FINANCIAL	14.492	0.877	4.737	0.051
SERVICES	18.908	1.437	4.027	0.182
INDUSTRY	12.938	2.956	3.876	0.022
OVERALL	13.933	1.319	4.365	0.075

STOCK PRICE INDEX WEIGHTED BY FREE FLOAT MARKET CAPITALIZATION (1999=1000)

	SUNDAY 17/07/2022	MONDAY 18/07/2022	% CHANGE	
			DAY BEFORE	YTD
GENERAL	2564.8	2573.0	0.32%	21.45%
FINANCIAL	2725.9	2740.4	0.53%	5.22%
SERVICES	1764.1	1760.9	-0.18%	32.66%
INDUSTRY	5761.1	5774.5	0.23%	57.52%

STOCK PRICE INDEX WEIGHTED BY FREE FLOAT MARKET CAPITALIZATION ASE20 (2014=1000)

	1378.6	1385.2	0.48%	28.93%
--	--------	--------	-------	--------

Total Return Index ASETR (2021=1074)

	1465.5	1472.5	0.47%	37.06%
--	--------	--------	-------	--------

STOCK PRICE INDEX WEIGHTED BY MARKET CAPITALIZATION (1991=1000)

	SUNDAY 17/07/2022	MONDAY 18/07/2022	% CHANGE	
			DAY BEFORE	YTD
GENERAL	5016.4	5033.8	0.35%	25.68%
BANKS	6887.8	6901.1	0.19%	5.10%
INSURANCE	1292.9	1271.0	-1.69%	-4.32%
SERVICES	820.4	818.0	-0.30%	4.55%
INDUSTRY	7838.7	7897.0	0.74%	68.00%

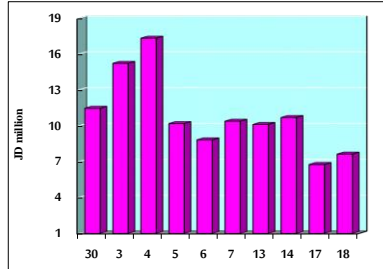
STOCK PRICE MARKET INDEX WEIGHTED BY FREE FLOAT MARKET CAP. (2012=1000)

	SUNDAY 17/07/2022	MONDAY 18/07/2022	% CHANGE	
			DAY BEFORE	YTD
FIRST MARKET	1438.6	1444.0	0.38%	26.13%
SECOND MARKET	823.0	822.8	-0.03%	-12.15%

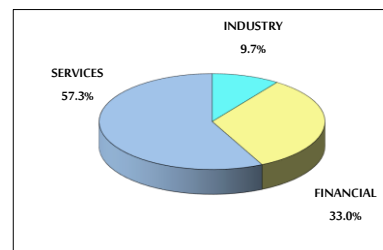
MARKET CAPITALIZATION (JD)

	19,042,571,357	19,104,608,347	0.33%	23.29%
--	----------------	----------------	-------	--------

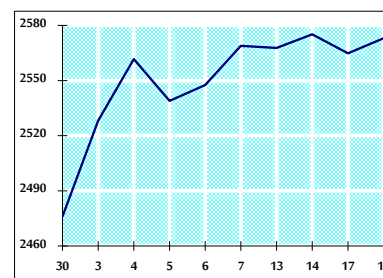
VALUE TRADED FROM 30/6 TO 18/7/2022



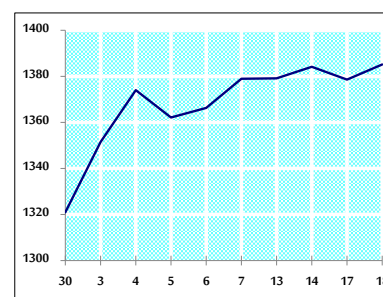
VALUE TRADED BY SECTOR MONDAY 18/7/2022



GENERAL FREE FLOAT PRICE INDEX FROM 30/6 TO 18/7/2022



ASE20 FREE FLOAT PRICE INDEX FROM 30/6 TO 18/7/2022



GENERAL PRICE INDEX FROM 30/6 TO 18/7/2022

