

Daily Summary for Amman Stock Exchange

VALUE TRADED (JD)

	2021	2022	NET CHANGE	CHANGE (%)
Daily	7,374,025	10,048,740	2,674,715	36.27%
Cumulative (3/7-25/7)	100,063,091	135,348,209	35,285,118	35.26%
Cumulative (2/1-25/7)	1,229,153,344	1,105,728,867	-123,424,477	-10.04%

NO. OF SHARES TRADED

	2021	2022	NET CHANGE	CHANGE (%)
Daily	4,448,388	4,766,592	318,204	7.15%
Cumulative (3/7-25/7)	66,655,578	72,817,345	6,161,767	9.24%
Cumulative (2/1-25/7)	972,950,771	655,591,578	-317,359,193	-32.62%

NO. OF TRANSACTIONS

	2021	2022	NET CHANGE	CHANGE (%)
Daily	3,388	4,670	1,282	37.84%
Cumulative (3/7-25/7)	44,308	59,433	15,125	34.14%
Cumulative (2/1-25/7)	471,667	435,067	-36,600	-7.76%

SOME FINANCIAL RATIOS FOR THE ASE (25/7/2022)

SECTOR	P/E	P/BV	DIVIDEND YIELD (%)	TURNOVER (%)
FINANCIAL	14.456	0.875	4.749	0.057
SERVICES	19.346	1.471	3.935	0.154
INDUSTRY	13.061	2.984	3.839	0.064
OVERALL	14.027	1.328	4.335	0.078

STOCK PRICE INDEX WEIGHTED BY FREE FLOAT MARKET CAPITALIZATION (1999=1000)

	SUNDAY 24/07/2022	MONDAY 25/07/2022	% CHANGE	
			DAY BEFORE	YTD
GENERAL	2602.2	2605.4	0.12%	22.97%
FINANCIAL	2753.4	2746.2	-0.26%	5.44%
SERVICES	1798.6	1817.7	1.06%	36.93%
INDUSTRY	5851.5	5846.6	-0.08%	59.49%

STOCK PRICE INDEX WEIGHTED BY FREE FLOAT MARKET CAPITALIZATION ASE20 (2014=1000)

	1401.8	1403.0	0.09%	30.59%
--	--------	--------	-------	--------

Total Return Index ASETR (2021=1074)

	1490.2	1491.5	0.09%	38.82%
--	--------	--------	-------	--------

STOCK PRICE INDEX WEIGHTED BY MARKET CAPITALIZATION (1991=1000)

	SUNDAY 24/07/2022	MONDAY 25/07/2022	% CHANGE	
			DAY BEFORE	YTD
GENERAL	5069.7	5067.7	-0.04%	26.53%
BANKS	6911.1	6878.8	-0.47%	4.76%
INSURANCE	1269.3	1281.4	0.96%	-3.53%
SERVICES	816.1	819.3	0.39%	4.72%
INDUSTRY	8018.7	8037.7	0.24%	71.00%

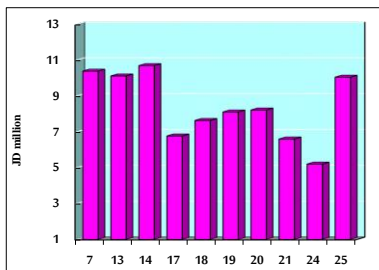
STOCK PRICE MARKET INDEX WEIGHTED BY FREE FLOAT MARKET CAP. (2012=1000)

	SUNDAY 24/07/2022	MONDAY 25/07/2022	% CHANGE	
			DAY BEFORE	YTD
FIRST MARKET	1460.6	1462.2	0.11%	27.71%
SECOND MARKET	827.8	825.3	-0.30%	-11.88%

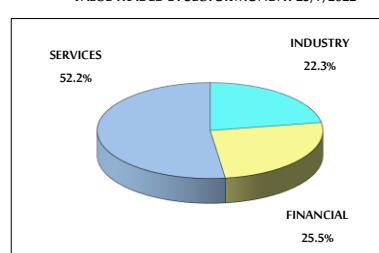
MARKET CAPITALIZATION (JD)

	19,220,905,487	19,212,580,702	-0.04%	23.99%
--	----------------	----------------	--------	--------

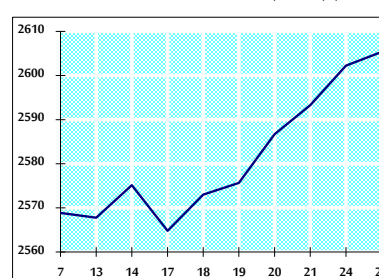
VALUE TRADED FROM 7/7 TO 25/7/2022



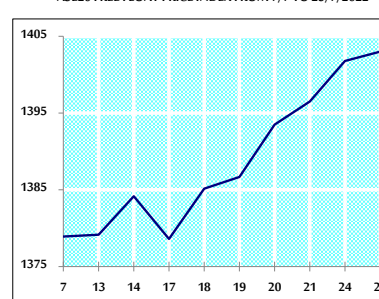
VALUE TRADED BY SECTOR MONDAY 25/7/2022



GENERAL FREE FLOAT PRICE INDEX FROM 7/7 TO 25/7/2022



ASE20 FREE FLOAT PRICE INDEX FROM 7/7 TO 25/7/2022



GENERAL PRICE INDEX FROM 7/7 TO 25/7/2022

