

Daily Summary for Amman Stock Exchange

VALUE TRADED (JD)

	2021	2022	NET CHANGE	CHANGE (%)
Daily	4,099,366	14,668,493	10,569,127	257.82%
Cumulative (1/8-2/8)	11,367,543	33,237,259	21,869,716	192.39%
Cumulative (2/1-2/8)	1,264,785,446	1,184,975,186	-79,810,260	-6.31%

NO. OF SHARES TRADED

	2021	2022	NET CHANGE	CHANGE (%)
Daily	2,550,257	6,158,721	3,608,464	141.49%
Cumulative (1/8-2/8)	6,859,813	15,223,224	8,363,411	121.92%
Cumulative (2/1-2/8)	996,716,111	693,138,730	-303,577,381	-30.46%

NO. OF TRANSACTIONS

	2021	2022	NET CHANGE	CHANGE (%)
Daily	2,263	5,614	3,351	148.08%
Cumulative (1/8-2/8)	5,401	10,694	5,293	98.00%
Cumulative (2/1-2/8)	487,177	464,286	-22,891	-4.70%

SOME FINANCIAL RATIOS FOR THE ASE (2/8/2022)

SECTOR	P/E	P/BV	DIVIDEND YIELD (%)	TURNOVER (%)
FINANCIAL	14.185	0.858	4.840	0.056
SERVICES	19.977	1.519	3.811	0.254
INDUSTRY	12.482	2.851	4.018	0.092
OVERALL	13.710	1.298	4.435	0.101

STOCK PRICE INDEX WEIGHTED BY FREE FLOAT MARKET CAPITALIZATION (1999=1000)

	MONDAY 01/08/2022	TUESDAY 02/08/2022	% CHANGE	
			DAY BEFORE	YTD
GENERAL	2600.3	2580.7	-0.76%	21.81%
FINANCIAL	2713.2	2686.8	-0.97%	3.16%
SERVICES	1895.4	1897.4	0.11%	42.94%
INDUSTRY	5668.0	5602.0	-1.16%	52.81%

STOCK PRICE INDEX WEIGHTED BY FREE FLOAT MARKET CAPITALIZATION ASE20 (2014=1000)

	1400.4	1388.1	-0.88%	29.20%
--	--------	--------	--------	--------

Total Return Index ASETR (2021=1074)

	1488.7	1475.6	-0.88%	37.35%
--	--------	--------	--------	--------

STOCK PRICE INDEX WEIGHTED BY MARKET CAPITALIZATION (1991=1000)

	MONDAY 01/08/2022	TUESDAY 02/08/2022	% CHANGE	
			DAY BEFORE	YTD
GENERAL	4991.7	4954.5	-0.75%	23.70%
BANKS	6816.2	6745.9	-1.03%	2.73%
INSURANCE	1276.0	1283.1	0.56%	-3.41%
SERVICES	826.2	841.0	1.80%	7.50%
INDUSTRY	7820.8	7728.8	-1.18%	64.43%

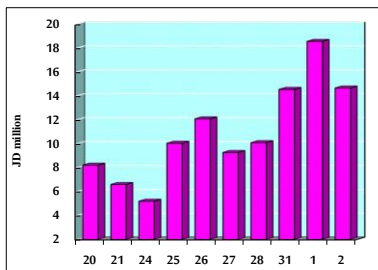
STOCK PRICE MARKET INDEX WEIGHTED BY FREE FLOAT MARKET CAP. (2012=1000)

	MONDAY 01/08/2022	TUESDAY 02/08/2022	% CHANGE	
			DAY BEFORE	YTD
FIRST MARKET	1461.0	1449.1	-0.82%	26.56%
SECOND MARKET	815.1	816.1	0.13%	-12.86%

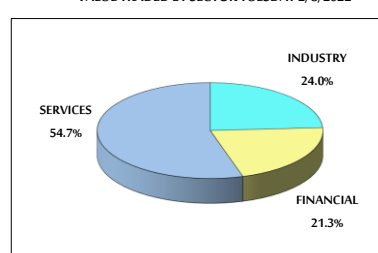
MARKET CAPITALIZATION (JD)

	18,934,080,667	18,798,934,319	-0.71%	21.32%
--	----------------	----------------	--------	--------

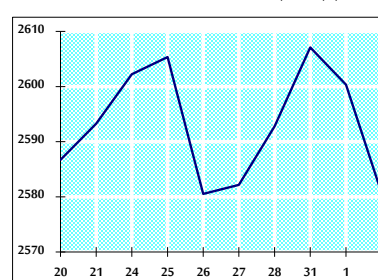
VALUE TRADED FROM 20/7 TO 2/8/2022



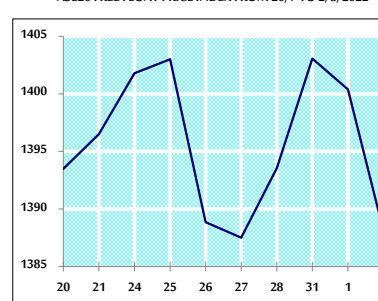
VALUE TRADED BY SECTOR TUESDAY 2/8/2022



GENERAL FREE FLOAT PRICE INDEX FROM 20/7 TO 2/8/2022



ASE20 FREE FLOAT PRICE INDEX FROM 20/7 TO 2/8/2022



GENERAL PRICE INDEX FROM 20/7 TO 2/8/2022

