

Daily Summary for Amman Stock Exchange

VALUE TRADED (JD)

	2020	2021	NET CHANGE	CHANGE (%)
Daily	5,478,487	20,645,568	15,167,081	276.85%
Cumulative(3/1-6/1)	16,013,600	42,356,334	26,342,734	164.50%
Cumulative(3/1-6/1)	16,013,600	42,356,334	26,342,734	164.50%

NO. OF SHARES TRADED

	2020	2021	NET CHANGE	CHANGE (%)
Daily	3,475,316	31,660,011	28,184,695	811.00%
Cumulative(3/1-6/1)	13,079,042	55,036,777	41,957,735	320.80%
Cumulative(3/1-6/1)	13,079,042	55,036,777	41,957,735	320.80%

NO. OF TRANSACTIONS

	2020	2021	NET CHANGE	CHANGE (%)
Daily	1,897	3,676	1,779	93.78%
Cumulative(3/1-6/1)	6,977	12,155	5,178	74.22%
Cumulative(3/1-6/1)	6,977	12,155	5,178	74.22%

SOME FINANCIAL RATIOS FOR THE ASE (6/1/2021)

SECTOR	P/E	P/BV	DIVIDEND YIELD (%)	TURNOVER (%)
FINANCIAL	9.279	0.751	0.167	0.584
SERVICES	12.015	1.047	5.074	0.289
INDUSTRY	17.639	1.283	3.724	0.370
OVERALL	10.181	0.858	1.797	0.497

STOCK PRICE INDEX WEIGHTED BY FREE FLOAT MARKET CAPITALIZATION (1999=1000)

	TUESDAY 05/01/2021	WEDNESDAY 06/01/2021	% CHANGE	
			DAY BEFORE	YTD
GENERAL	1673.5	1677.4	0.24%	1.22%
FINANCIAL	2196.5	2199.4	0.13%	1.28%
SERVICES	1153.8	1158.4	0.40%	0.90%
INDUSTRY	2128.2	2133.3	0.24%	0.64%

STOCK PRICE INDEX WEIGHTED BY FREE FLOAT MARKET CAPITALIZATION ASE20 (2014=1000)

	811.8	814.4	0.32%	0.98%
--	-------	-------	-------	-------

STOCK PRICE INDEX WEIGHTED BY MARKET CAPITALIZATION (1991=1000)

	TUESDAY 05/01/2021	WEDNESDAY 06/01/2021	% CHANGE	
			DAY BEFORE	YTD
GENERAL	3078.5	3079.4	0.03%	0.98%
BANKS	5459.0	5452.9	-0.11%	0.78%
INSURANCE	1296.4	1297.1	0.06%	-0.92%
SERVICES	721.3	719.6	-0.23%	2.18%
INDUSTRY	2824.2	2838.1	0.49%	0.71%

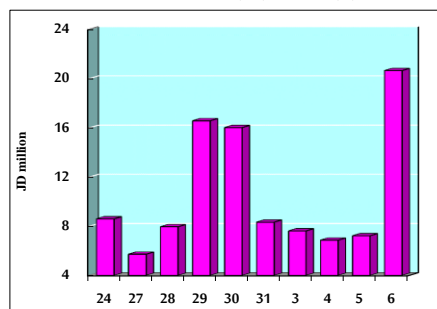
STOCK PRICE MARKET INDEX WEIGHTED BY FREE FLOAT MARKET CAP. (2012=1000)

	TUESDAY 05/01/2021	WEDNESDAY 06/01/2021	% CHANGE	
			DAY BEFORE	YTD
FIRST MARKET	873.6	876.5	0.33%	0.94%
SECOND MARKET	900.4	899.4	-0.11%	3.22%

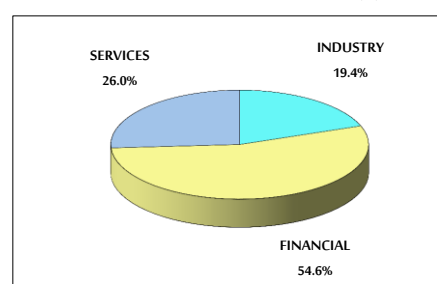
MARKET CAPITALIZATION (JD)

	13,011,134,481	13,013,366,098	0.02%	0.82%
--	----------------	----------------	-------	-------

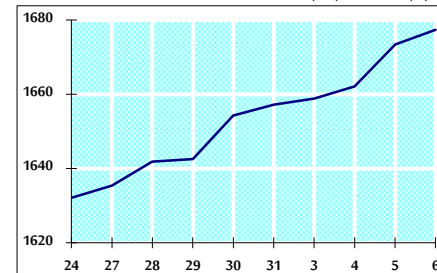
VALUE TRADED FROM 24/12/2020 TO 6/1/2021



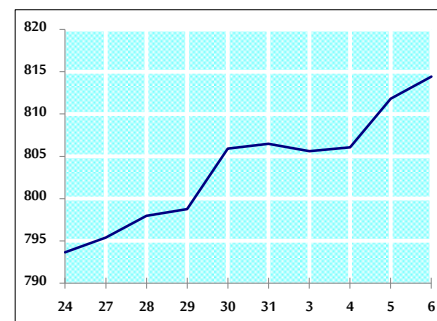
VALUE TRADED BY SECTOR WEDNESDAY 6/1/2021



GENERAL FREE FLOAT PRICE INDEX FROM 24/12/2020 TO 6/1/2021



ASE20 FREE FLOAT PRICE INDEX FROM 24/12/2020 TO 6/1/2021



GENERAL PRICE INDEX FROM 24/12/2020 TO 6/1/2021

