

Daily Summary for Amman Stock Exchange

VALUE TRADED (JD)

	2020	2021	NET CHANGE	CHANGE (%)
Daily	4,725,650	6,613,310	1,887,660	39.94%
Cumulative(1/2-15/2)	72,335,931	75,157,417	2,821,486	3.90%
Cumulative(3/1-15/2)	177,365,788	287,246,925	109,881,137	61.95%

NO. OF SHARES TRADED

	2020	2021	NET CHANGE	CHANGE (%)
Daily	4,068,128	6,556,589	2,488,461	61.17%
Cumulative(1/2-15/2)	66,415,576	72,625,915	6,210,339	9.35%
Cumulative(3/1-15/2)	159,514,180	272,277,144	112,762,964	70.69%

NO. OF TRANSACTIONS

	2020	2021	NET CHANGE	CHANGE (%)
Daily	2,293	2,896	603	26.30%
Cumulative(1/2-15/2)	26,042	33,431	7,389	28.37%
Cumulative(3/1-15/2)	70,196	98,567	28,371	40.42%

SOME FINANCIAL RATIOS FOR THE ASE (15/2/2021)

SECTOR	P/E	P/BV	DIVIDEND YIELD (%)	TURNOVER (%)
FINANCIAL	21.547	0.743	2.332	0.091
SERVICES	12.129	1.058	4.978	0.098
INDUSTRY	19.891	1.574	3.134	0.177
OVERALL	18.501	0.898	3.072	0.103

STOCK PRICE INDEX WEIGHTED BY FREE FLOAT MARKET CAPITALIZATION (1999=1000)

	SUNDAY 14/02/2021	MONDAY 15/02/2021	% CHANGE	
			DAY BEFORE	YTD
GENERAL	1731.0	1728.8	-0.12%	4.32%
FINANCIAL	2245.9	2238.7	-0.32%	3.09%
SERVICES	1145.9	1144.1	-0.16%	-0.34%
INDUSTRY	2466.1	2491.0	1.01%	17.52%

STOCK PRICE INDEX WEIGHTED BY FREE FLOAT MARKET CAPITALIZATION ASE20 (2014=1000)

	847.8	846.5	-0.15%	4.96%
--	-------	-------	--------	-------

STOCK PRICE INDEX WEIGHTED BY MARKET CAPITALIZATION (1991=1000)

	SUNDAY 14/02/2021	MONDAY 15/02/2021	% CHANGE	
			DAY BEFORE	YTD
GENERAL	3259.6	3259.6	0.00%	6.89%
BANKS	5486.7	5470.3	-0.30%	1.10%
INSURANCE	1265.9	1266.2	0.03%	-3.28%
SERVICES	717.5	716.9	-0.07%	1.80%
INDUSTRY	3443.3	3463.2	0.58%	22.90%

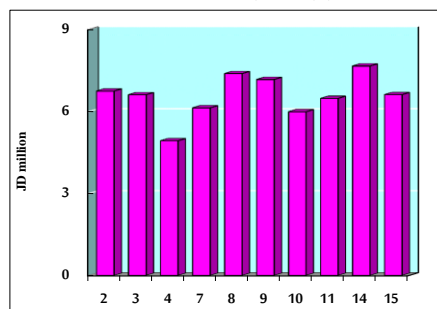
STOCK PRICE MARKET INDEX WEIGHTED BY FREE FLOAT MARKET CAP. (2012=1000)

	SUNDAY 14/02/2021	MONDAY 15/02/2021	% CHANGE	
			DAY BEFORE	YTD
FIRST MARKET	909.3	908.0	-0.14%	4.56%
SECOND MARKET	906.3	906.5	0.03%	4.03%

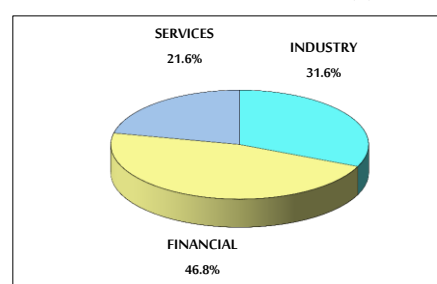
MARKET CAPITALIZATION (JD)

	13,675,832,886	13,676,082,832	0.00%	5.95%
--	----------------	----------------	-------	-------

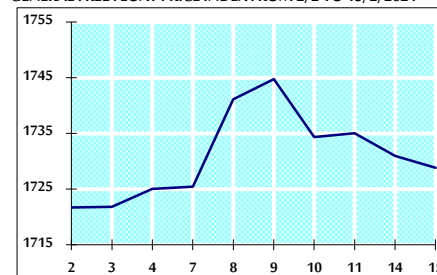
VALUE TRADED FROM 2/2 TO 15/2/2021



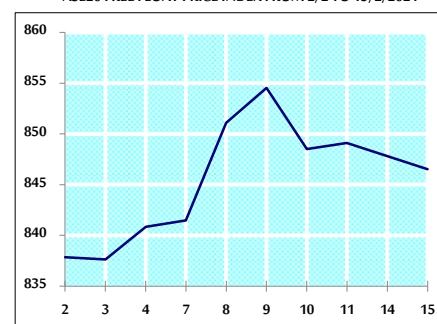
VALUE TRADED BY SECTOR MONDAY 15/2/2021



GENERAL FREE FLOAT PRICE INDEX FROM 2/2 TO 15/2/2021



ASE20 FREE FLOAT PRICE INDEX FROM 2/2 TO 15/2/2021



GENERAL PRICE INDEX FROM 2/2 TO 15/2/2021

