

Daily Summary for Amman Stock Exchange

VALUE TRADED (JD)

	2020	2021	NET CHANGE	CHANGE (%)
Daily	3,537,558	10,082,802	6,545,244	185.02%
Cumulative (1/6-1/6)	3,537,558	10,082,802	6,545,244	185.02%
Cumulative (3/1-1/6)	319,170,027	878,240,136	559,070,109	175.16%

NO. OF SHARES TRADED

	2020	2021	NET CHANGE	CHANGE (%)
Daily	4,866,030	6,946,373	2,080,343	42.75%
Cumulative (1/6-1/6)	4,866,030	6,946,373	2,080,343	42.75%
Cumulative (3/1-1/6)	293,928,244	757,232,902	463,304,658	157.63%

NO. OF TRANSACTIONS

	2020	2021	NET CHANGE	CHANGE (%)
Daily	2,002	4,887	2,885	144.11%
Cumulative (1/6-1/6)	2,002	4,887	2,885	144.11%
Cumulative (3/1-1/6)	126,426	329,503	203,077	160.63%

SOME FINANCIAL RATIOS FOR THE ASE (1/6/2021)

SECTOR	P/E	P/BV	DIVIDEND YIELD (%)	TURNOVER (%)
FINANCIAL	35.619	0.885	3.201	0.110
SERVICES	-	1.250	2.293	0.076
INDUSTRY	24.833	1.987	2.888	0.161
OVERALL	37.290	1.090	3.011	0.110

STOCK PRICE INDEX WEIGHTED BY FREE FLOAT MARKET CAPITALIZATION (1999=1000)

	MONDAY 31/05/2021	TUESDAY 01/06/2021	% CHANGE	
			DAY BEFORE	YTD
GENERAL	2052.9	2048.3	-0.23%	23.60%
FINANCIAL	2541.1	2531.9	-0.36%	16.59%
SERVICES	1330.5	1319.2	-0.85%	14.91%
INDUSTRY	3321.9	3370.5	1.46%	59.00%

STOCK PRICE INDEX WEIGHTED BY FREE FLOAT MARKET CAPITALIZATION ASE20 (2014=1000)

	1029.1	1025.2	-0.37%	27.12%
--	--------	--------	--------	--------

STOCK PRICE INDEX WEIGHTED BY MARKET CAPITALIZATION (1991=1000)

	MONDAY 31/05/2021	TUESDAY 01/06/2021	% CHANGE	
			DAY BEFORE	YTD
GENERAL	3950.3	3967.1	0.43%	30.09%
BANKS	6716.1	6737.8	0.32%	24.53%
INSURANCE	1273.0	1274.6	0.13%	-2.64%
SERVICES	785.3	782.8	-0.32%	11.15%
INDUSTRY	4320.1	4362.4	0.98%	54.80%

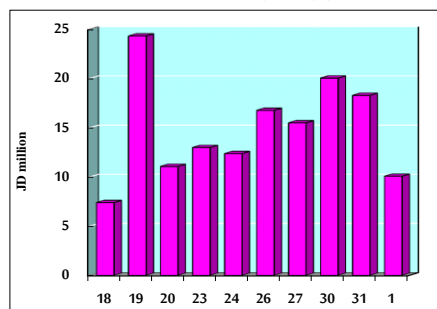
STOCK PRICE MARKET INDEX WEIGHTED BY FREE FLOAT MARKET CAP. (2012=1000)

	MONDAY 31/05/2021	TUESDAY 01/06/2021	% CHANGE	
			DAY BEFORE	YTD
FIRST MARKET	1091.8	1087.9	-0.36%	25.28%
SECOND MARKET	982.7	991.1	0.85%	13.74%

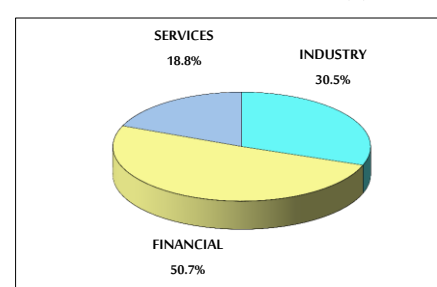
MARKET CAPITALIZATION (JD)

	16,087,742,444	16,148,248,905	0.38%	25.10%
--	----------------	----------------	-------	--------

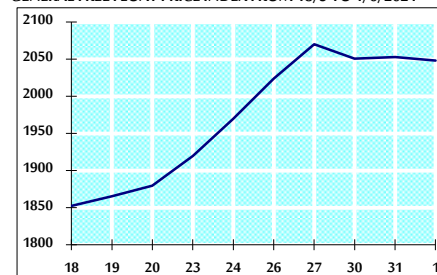
VALUE TRADED FROM 18/5 TO 1/6/2021



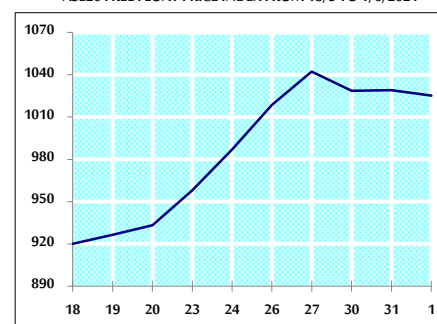
VALUE TRADED BY SECTOR TUESDAY 1/6/2021



GENERAL FREE FLOAT PRICE INDEX FROM 18/5 TO 1/6/2021



ASE20 FREE FLOAT PRICE INDEX FROM 18/5 TO 1/6/2021



GENERAL PRICE INDEX FROM 18/5 TO 1/6/2021

