

Daily Summary for Amman Stock Exchange

VALUE TRADED (JD)

	2020	2021	NET CHANGE	CHANGE (%)
Daily	4,075,510	13,066,760	8,991,250	220.62%
Cumulative (1/6-3/6)	12,374,165	34,145,754	21,771,589	175.94%
Cumulative (3/1-3/6)	328,006,634	902,303,088	574,296,454	175.09%

NO. OF SHARES TRADED

	2020	2021	NET CHANGE	CHANGE (%)
Daily	4,990,948	7,426,592	2,435,644	48.80%
Cumulative (1/6-3/6)	14,817,578	21,556,819	6,739,241	45.48%
Cumulative (3/1-3/6)	303,879,792	771,843,348	467,963,556	154.00%

NO. OF TRANSACTIONS

	2020	2021	NET CHANGE	CHANGE (%)
Daily	1,680	4,966	3,286	195.60%
Cumulative (1/6-3/6)	5,911	14,990	9,079	153.59%
Cumulative (3/1-3/6)	130,335	339,606	209,271	160.56%

SOME FINANCIAL RATIOS FOR THE ASE (3/6/2021)

SECTOR	P/E	P/BV	DIVIDEND YIELD (%)	TURNOVER (%)
FINANCIAL	35.119	0.873	3.246	0.089
SERVICES	-	1.256	2.283	0.139
INDUSTRY	24.660	1.973	2.908	0.237
OVERALL	36.898	1.078	3.043	0.117

STOCK PRICE INDEX WEIGHTED BY FREE FLOAT MARKET CAPITALIZATION (1999=1000)

	WEDNESDAY 02/06/2021	THURSDAY 03/06/2021	% CHANGE	
			DAY BEFORE	YTD
GENERAL	2053.2	2038.0	-0.74%	22.98%
FINANCIAL	2535.7	2508.5	-1.08%	15.51%
SERVICES	1322.6	1323.1	0.04%	15.25%
INDUSTRY	3389.6	3384.7	-0.15%	59.68%

STOCK PRICE INDEX WEIGHTED BY FREE FLOAT MARKET CAPITALIZATION ASE20 (2014=1000)

	1028.3	1018.9	-0.92%	26.33%
--	--------	--------	--------	--------

STOCK PRICE INDEX WEIGHTED BY MARKET CAPITALIZATION (1991=1000)

	WEDNESDAY 02/06/2021	THURSDAY 03/06/2021	% CHANGE	
			DAY BEFORE	YTD
GENERAL	3976.8	3925.3	-1.30%	28.72%
BANKS	6755.7	6626.1	-1.92%	22.46%
INSURANCE	1276.0	1277.4	0.11%	-2.43%
SERVICES	789.0	786.1	-0.37%	11.62%
INDUSTRY	4360.6	4333.3	-0.63%	53.77%

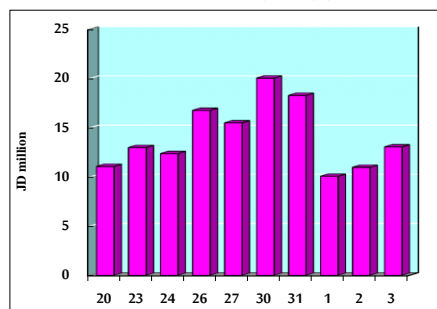
STOCK PRICE MARKET INDEX WEIGHTED BY FREE FLOAT MARKET CAP. (2012=1000)

	WEDNESDAY 02/06/2021	THURSDAY 03/06/2021	% CHANGE	
			DAY BEFORE	YTD
FIRST MARKET	1091.0	1081.0	-0.92%	24.48%
SECOND MARKET	994.5	1001.7	0.72%	14.95%

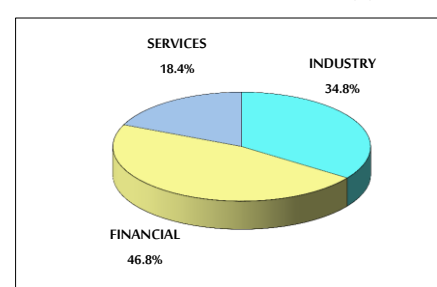
MARKET CAPITALIZATION (JD)

	16,184,834,359	16,005,062,629	-1.11%	24.00%
--	----------------	----------------	--------	--------

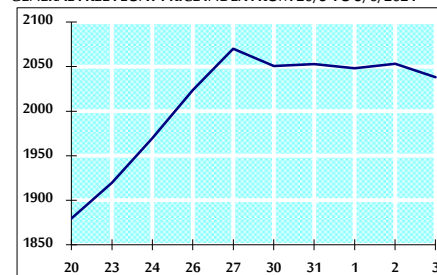
VALUE TRADED FROM 20/5 TO 3/6/2021



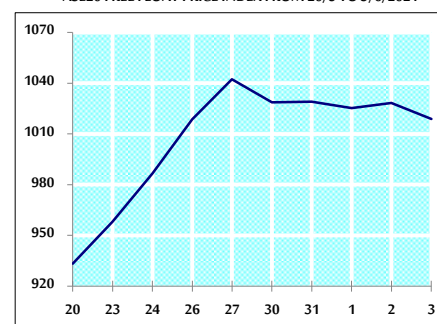
VALUE TRADED BY SECTOR THURSDAY 3/6/2021



GENERAL FREE FLOAT PRICE INDEX FROM 20/5 TO 3/6/2021



ASE20 FREE FLOAT PRICE INDEX FROM 20/5 TO 3/6/2021



GENERAL PRICE INDEX FROM 20/5 TO 3/6/2021

