

Daily Summary for Amman Stock Exchange

VALUE TRADED (JD)

	2020	2021	NET CHANGE	CHANGE (%)
Daily	12,738,389	11,423,979	-1,314,410	-10.32%
Cumulative (1/6-10/6)	43,661,031	88,629,296	44,968,265	102.99%
Cumulative (3/1-10/6)	359,293,500	956,786,630	597,493,130	166.30%

NO. OF SHARES TRADED

	2020	2021	NET CHANGE	CHANGE (%)
Daily	14,435,714	7,726,977	-6,708,737	-46.47%
Cumulative (1/6-10/6)	52,862,153	57,294,740	4,432,587	8.39%
Cumulative (3/1-10/6)	341,924,367	807,581,269	465,656,902	136.19%

NO. OF TRANSACTIONS

	2020	2021	NET CHANGE	CHANGE (%)
Daily	1,734	4,426	2,692	155.25%
Cumulative (1/6-10/6)	15,948	36,461	20,513	128.62%
Cumulative (3/1-10/6)	140,372	361,077	220,705	157.23%

SOME FINANCIAL RATIOS FOR THE ASE (10/6/2021)

SECTOR	P/E	P/BV	DIVIDEND YIELD (%)	TURNOVER (%)
FINANCIAL	35.660	0.886	3.197	0.096
SERVICES	-	1.276	2.247	0.205
INDUSTRY	26.168	2.094	2.741	0.131
OVERALL	38.031	1.111	2.952	0.122

STOCK PRICE INDEX WEIGHTED BY FREE FLOAT MARKET CAPITALIZATION (1999=1000)

	WEDNESDAY 09/06/2021	THURSDAY 10/06/2021	% CHANGE	
			DAY BEFORE	YTD
GENERAL	2067.1	2076.5	0.46%	25.30%
FINANCIAL	2534.7	2537.1	0.09%	16.83%
SERVICES	1337.5	1334.8	-0.20%	16.27%
INDUSTRY	3471.0	3561.9	2.62%	68.04%

STOCK PRICE INDEX WEIGHTED BY FREE FLOAT MARKET CAPITALIZATION ASE20 (2014=1000)

	1039.3	1045.3	0.58%	29.62%
--	--------	--------	-------	--------

STOCK PRICE INDEX WEIGHTED BY MARKET CAPITALIZATION (1991=1000)

	WEDNESDAY 09/06/2021	THURSDAY 10/06/2021	% CHANGE	
			DAY BEFORE	YTD
GENERAL	3996.7	4045.9	1.23%	32.67%
BANKS	6726.9	6750.6	0.35%	24.77%
INSURANCE	1278.4	1278.1	-0.02%	-2.38%
SERVICES	797.0	796.1	-0.12%	13.04%
INDUSTRY	4446.3	4600.4	3.47%	63.25%

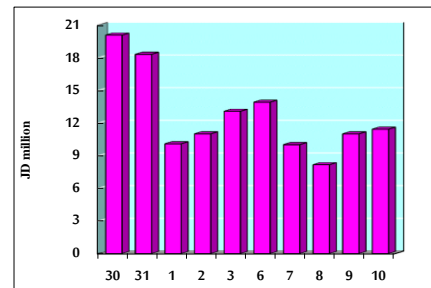
STOCK PRICE MARKET INDEX WEIGHTED BY FREE FLOAT MARKET CAP. (2012=1000)

	WEDNESDAY 09/06/2021	THURSDAY 10/06/2021	% CHANGE	
			DAY BEFORE	YTD
FIRST MARKET	1100.5	1106.2	0.52%	27.38%
SECOND MARKET	995.3	994.0	-0.13%	14.08%

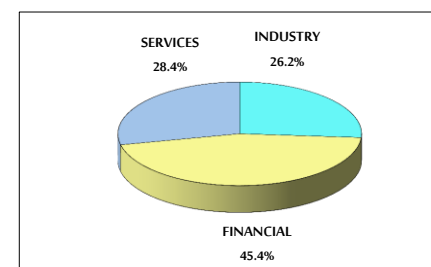
MARKET CAPITALIZATION (JD)

	16,251,157,331	16,425,398,242	1.07%	27.25%
--	----------------	----------------	-------	--------

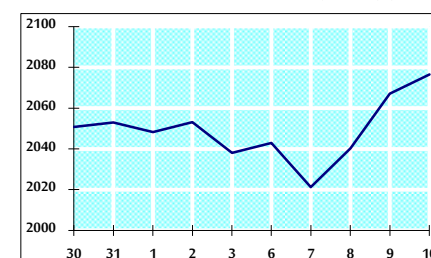
VALUE TRADED FROM 30/5 TO 10/6/2021



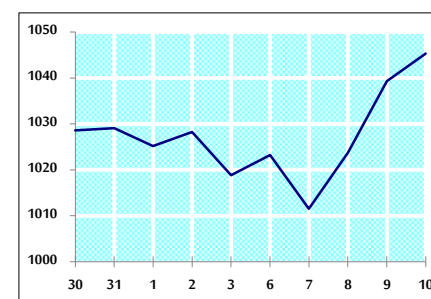
VALUE TRADED BY SECTOR THURSDAY 10/6/2021



GENERAL FREE FLOAT PRICE INDEX FROM 30/5 TO 10/6/2021



ASE20 FREE FLOAT PRICE INDEX FROM 30/5 TO 10/6/2021



GENERAL PRICE INDEX FROM 30/5 TO 10/6/2021

