

## Daily Summary for Amman Stock Exchange

### VALUE TRADED (JD)

	2020	2021	NET CHANGE	CHANGE (%)
Daily	2,894,256	5,911,764	3,017,508	104.26%
Cumulative (1/7-6/7)	13,538,190	28,720,904	15,182,714	112.15%
Cumulative (3/1-6/7)	429,147,502	1,157,811,157	728,663,655	169.79%

### NO. OF SHARES TRADED

	2020	2021	NET CHANGE	CHANGE (%)
Daily	2,533,466	3,712,995	1,179,529	46.56%
Cumulative (1/7-6/7)	13,582,481	17,696,141	4,113,660	30.29%
Cumulative (3/1-6/7)	416,909,572	923,991,334	507,081,762	121.63%

### NO. OF TRANSACTIONS

	2020	2021	NET CHANGE	CHANGE (%)
Daily	1,617	3,206	1,589	98.27%
Cumulative (1/7-6/7)	7,112	13,282	6,170	86.75%
Cumulative (3/1-6/7)	169,750	440,641	270,891	159.58%

### SOME FINANCIAL RATIOS FOR THE ASE (6/7/2021)

SECTOR	P/E	P/BV	DIVIDEND YIELD (%)	TURNOVER (%)
FINANCIAL	35.026	0.870	3.267	0.050
SERVICES	-	1.275	2.184	0.064
INDUSTRY	27.636	2.212	2.595	0.102
OVERALL	38.373	1.126	2.927	0.059

### STOCK PRICE INDEX WEIGHTED BY FREE FLOAT MARKET CAPITALIZATION (1999=1000)

	MONDAY 05/07/2021	TUESDAY 06/07/2021	% CHANGE	
			DAY BEFORE	YTD
GENERAL	2101.1	2081.4	-0.94%	25.60%
FINANCIAL	2542.7	2512.8	-1.18%	15.71%
SERVICES	1354.3	1351.6	-0.20%	17.73%
INDUSTRY	3701.2	3672.4	-0.78%	73.25%

### STOCK PRICE INDEX WEIGHTED BY FREE FLOAT MARKET CAPITALIZATION ASE20 (2014=1000)

	1066.6	1056.7	-0.93%	31.02%
--	--------	--------	--------	--------

### STOCK PRICE INDEX WEIGHTED BY MARKET CAPITALIZATION (1991=1000)

	MONDAY 05/07/2021	TUESDAY 06/07/2021	% CHANGE	
			DAY BEFORE	YTD
GENERAL	4134.4	4068.2	-1.60%	33.40%
BANKS	6779.9	6626.8	-2.26%	22.48%
INSURANCE	1283.7	1276.1	-0.59%	-2.52%
SERVICES	795.4	787.6	-0.98%	11.83%
INDUSTRY	4889.6	4850.1	-0.81%	72.11%

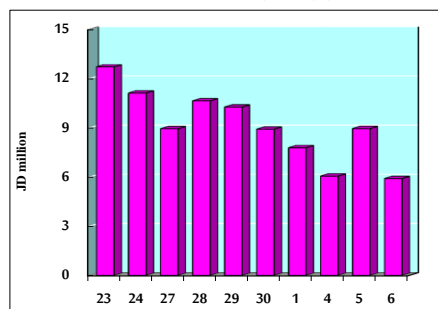
### STOCK PRICE MARKET INDEX WEIGHTED BY FREE FLOAT MARKET CAP. (2012=1000)

	MONDAY 05/07/2021	TUESDAY 06/07/2021	% CHANGE	
			DAY BEFORE	YTD
FIRST MARKET	1128.4	1118.0	-0.92%	28.75%
SECOND MARKET	956.5	946.8	-1.02%	8.65%

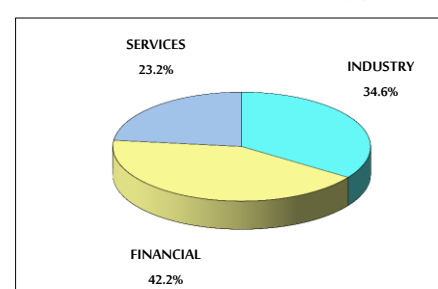
### MARKET CAPITALIZATION (JD)

	15,962,747,077	15,726,259,668	-1.48%	21.84%
--	----------------	----------------	--------	--------

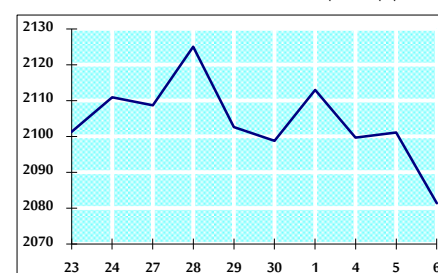
### VALUE TRADED FROM 23/6 TO 6/7/2021



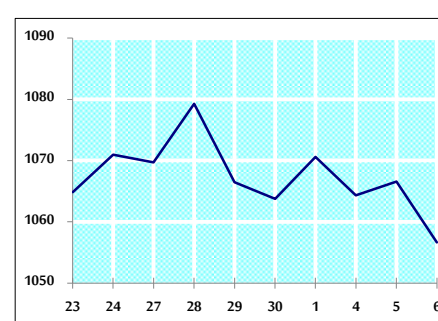
### VALUE TRADED BY SECTOR TUESDAY 6/7/2021



### GENERAL FREE FLOAT PRICE INDEX FROM 23/6 TO 6/7/2021



### ASE20 FREE FLOAT PRICE INDEX FROM 23/6 TO 6/7/2021



### GENERAL PRICE INDEX FROM 23/6 TO 6/7/2021

