

## Daily Summary for Amman Stock Exchange

### VALUE TRADED (JD)

	2020	2021	NET CHANGE	CHANGE (%)
Daily	1,546,180	6,856,793	5,310,613	343.47%
Cumulative (1/7-13/7)	41,656,225	63,322,380	21,666,155	52.01%
Cumulative (3/1-13/7)	457,265,537	1,192,412,633	735,147,096	160.77%

### NO. OF SHARES TRADED

	2020	2021	NET CHANGE	CHANGE (%)
Daily	2,472,622	4,383,430	1,910,808	77.28%
Cumulative (1/7-13/7)	50,751,625	42,348,773	-8,402,852	-16.56%
Cumulative (3/1-13/7)	454,078,716	948,643,966	494,565,250	108.92%

### NO. OF TRANSACTIONS

	2020	2021	NET CHANGE	CHANGE (%)
Daily	1,478	3,315	1,837	124.29%
Cumulative (1/7-13/7)	15,510	28,417	12,907	83.22%
Cumulative (3/1-13/7)	178,148	455,776	277,628	155.84%

### SOME FINANCIAL RATIOS FOR THE ASE (13/7/2021)

SECTOR	P/E	P/BV	DIVIDEND YIELD (%)	TURNOVER (%)
FINANCIAL	35.223	0.875	3.249	0.063
SERVICES	-	1.259	2.212	0.109
INDUSTRY	28.293	2.264	2.535	0.037
OVERALL	38.717	1.136	2.901	0.070

### STOCK PRICE INDEX WEIGHTED BY FREE FLOAT MARKET CAPITALIZATION (1999=1000)

	MONDAY 12/07/2021	TUESDAY 13/07/2021	% CHANGE	
			DAY BEFORE	YTD
GENERAL	2081.8	2090.9	0.44%	26.17%
FINANCIAL	2517.0	2527.8	0.43%	16.40%
SERVICES	1335.2	1339.7	0.33%	16.70%
INDUSTRY	3712.9	3730.3	0.47%	75.98%

### STOCK PRICE INDEX WEIGHTED BY FREE FLOAT MARKET CAPITALIZATION ASE20 (2014=1000)

	MONDAY 12/07/2021	TUESDAY 13/07/2021	% CHANGE
	1055.8	1061.5	0.54%

### STOCK PRICE INDEX WEIGHTED BY MARKET CAPITALIZATION (1991=1000)

	MONDAY 12/07/2021	TUESDAY 13/07/2021	% CHANGE	
			DAY BEFORE	YTD
GENERAL	4080.3	4104.8	0.60%	34.60%
BANKS	6625.7	6659.9	0.52%	23.09%
INSURANCE	1277.0	1276.3	-0.06%	-2.51%
SERVICES	782.6	781.1	-0.20%	10.91%
INDUSTRY	4906.2	4958.5	1.07%	75.95%

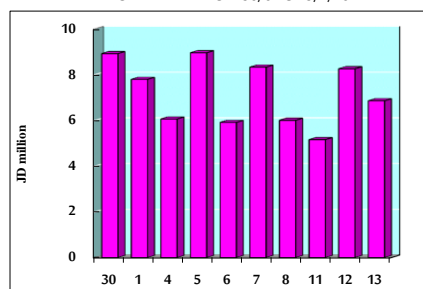
### STOCK PRICE MARKET INDEX WEIGHTED BY FREE FLOAT MARKET CAP. (2012=1000)

	MONDAY 12/07/2021	TUESDAY 13/07/2021	% CHANGE	
			DAY BEFORE	YTD
FIRST MARKET	1116.5	1122.3	0.52%	29.24%
SECOND MARKET	955.5	955.7	0.02%	9.68%

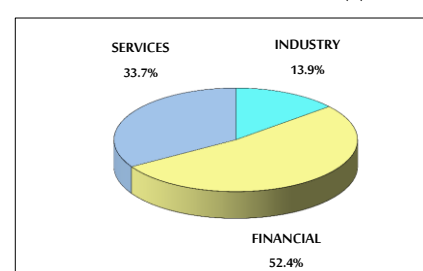
### MARKET CAPITALIZATION (JD)

	MONDAY 12/07/2021	TUESDAY 13/07/2021	% CHANGE
	15,772,381,182	15,858,677,409	0.55%

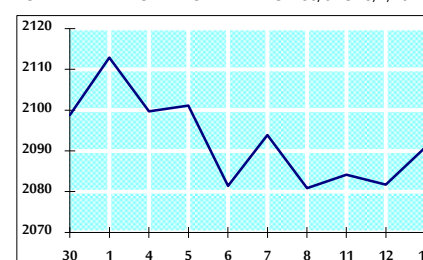
### VALUE TRADED FROM 30/6 TO 13/7/2021



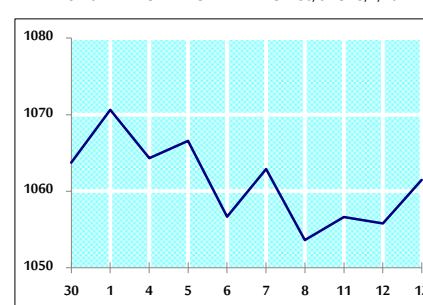
### VALUE TRADED BY SECTOR TUESDAY 13/7/2021



### GENERAL FREE FLOAT PRICE INDEX FROM 30/6 TO 13/7/2021



### ASE20 FREE FLOAT PRICE INDEX FROM 30/6 TO 13/7/2021



### GENERAL PRICE INDEX FROM 30/6 TO 13/7/2021

