

Daily Summary for Amman Stock Exchange

VALUE TRADED (JD)

	2020	2021	NET CHANGE	CHANGE (%)
Daily	3,578,054	6,786,185	3,208,131	89.66%
Cumulative (1/9-2/9)	6,844,398	15,116,673	8,272,275	120.86%
Cumulative (3/1-2/9)	617,230,852	1,406,187,955	788,957,103	127.82%

NO. OF SHARES TRADED

	2020	2021	NET CHANGE	CHANGE (%)
Daily	5,476,292	7,913,873	2,437,581	44.51%
Cumulative (1/9-2/9)	10,440,966	12,743,855	2,302,889	22.06%
Cumulative (3/1-2/9)	639,597,972	1,105,063,091	465,465,119	72.77%

NO. OF TRANSACTIONS

	2020	2021	NET CHANGE	CHANGE (%)
Daily	2,169	3,797	1,628	75.06%
Cumulative (1/9-2/9)	4,160	7,647	3,487	83.82%
Cumulative (3/1-2/9)	251,301	551,667	300,366	119.52%

SOME FINANCIAL RATIOS FOR THE ASE (2/9/2021)

SECTOR	P/E	P/BV	DIVIDEND YIELD (%)	TURNOVER (%)
FINANCIAL	34.859	0.866	3.283	0.155
SERVICES	-	1.222	2.269	0.043
INDUSTRY	27.278	2.183	2.629	0.107
OVERALL	37.972	1.114	2.958	0.126

STOCK PRICE INDEX WEIGHTED BY FREE FLOAT MARKET CAPITALIZATION (1999=1000)

	WEDNESDAY 01/09/2021	THURSDAY 02/09/2021	% CHANGE	
			DAY BEFORE	YTD
GENERAL	2060.3	2071.4	0.54%	24.99%
FINANCIAL	2506.9	2530.2	0.93%	16.51%
SERVICES	1294.8	1298.0	0.24%	13.07%
INDUSTRY	3683.2	3655.9	-0.74%	72.47%

STOCK PRICE INDEX WEIGHTED BY FREE FLOAT MARKET CAPITALIZATION ASE20 (2014=1000)

	1050.3	1056.6	0.59%	31.01%
--	--------	--------	-------	--------

STOCK PRICE INDEX WEIGHTED BY MARKET CAPITALIZATION (1991=1000)

	WEDNESDAY 01/09/2021	THURSDAY 02/09/2021	% CHANGE	
			DAY BEFORE	YTD
GENERAL	4012.1	4026.2	0.35%	32.03%
BANKS	6536.2	6591.4	0.84%	21.82%
INSURANCE	1250.5	1252.1	0.12%	-4.36%
SERVICES	773.4	777.8	0.58%	10.45%
INDUSTRY	4791.3	4767.0	-0.51%	69.16%

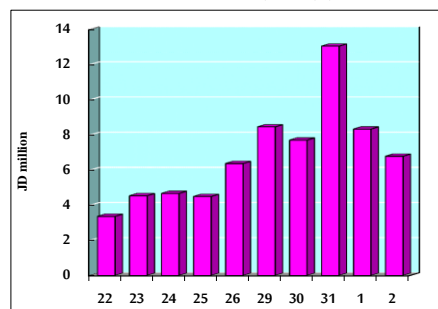
STOCK PRICE MARKET INDEX WEIGHTED BY FREE FLOAT MARKET CAP. (2012=1000)

	WEDNESDAY 01/09/2021	THURSDAY 02/09/2021	% CHANGE	
			DAY BEFORE	YTD
FIRST MARKET	1109.7	1115.6	0.53%	28.47%
SECOND MARKET	925.4	933.6	0.89%	7.14%

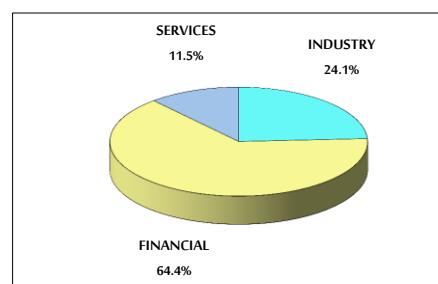
MARKET CAPITALIZATION (JD)

	15,507,211,750	15,558,260,452	0.33%	20.53%
--	----------------	----------------	-------	--------

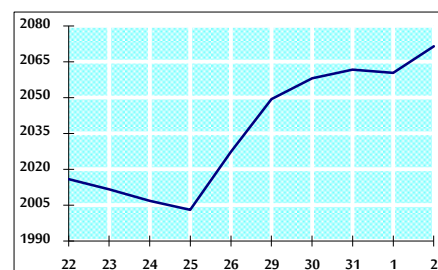
VALUE TRADED FROM 22/8 TO 2/9/2021



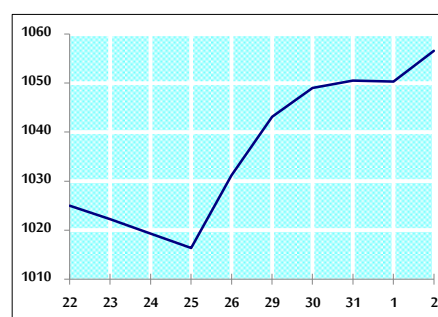
VALUE TRADED BY SECTOR THURSDAY 2/9/2021



GENERAL FREE FLOAT PRICE INDEX FROM 22/8 TO 2/9/2021



ASE20 FREE FLOAT PRICE INDEX FROM 22/8 TO 2/9/2021



GENERAL PRICE INDEX FROM 22/8 TO 2/9/2021

