

## Daily Summary for Amman Stock Exchange

### VALUE TRADED (JD)

	2020	2021	NET CHANGE	CHANGE (%)
Daily	3,392,303	5,158,826	1,766,523	52.07%
Cumulative (3/10-20/10)	52,341,101	81,254,888	28,913,787	55.24%
Cumulative (3/1-20/10)	763,402,009	1,629,707,342	866,305,333	113.48%

### NO. OF SHARES TRADED

	2020	2021	NET CHANGE	CHANGE (%)
Daily	3,988,221	4,419,324	431,103	10.81%
Cumulative (3/10-20/10)	64,838,834	59,313,257	-5,525,577	-8.52%
Cumulative (3/1-20/10)	842,265,420	1,270,511,167	428,245,747	50.84%

### NO. OF TRANSACTIONS

	2020	2021	NET CHANGE	CHANGE (%)
Daily	1,467	2,780	1,313	89.50%
Cumulative (3/10-20/10)	22,713	41,227	18,514	81.51%
Cumulative (3/1-20/10)	322,316	652,836	330,520	102.55%

### SOME FINANCIAL RATIOS FOR THE ASE (20/10/2021)

SECTOR	P/E	P/BV	DIVIDEND YIELD (%)	TURNOVER (%)
FINANCIAL	35.004	0.869	3.273	0.071
SERVICES	-	1.262	2.264	0.070
INDUSTRY	28.342	2.124	2.637	0.067
OVERALL	37.513	1.119	2.967	0.070

### STOCK PRICE INDEX WEIGHTED BY FREE FLOAT MARKET CAPITALIZATION (1999=1000)

	MONDAY 18/10/2021	WEDNESDAY 20/10/2021	% CHANGE	
			DAY BEFORE	YTD
GENERAL	2106.4	2109.8	0.16%	27.31%
FINANCIAL	2567.7	2577.1	0.37%	18.67%
SERVICES	1328.6	1332.0	0.25%	16.03%
INDUSTRY	3699.8	3674.3	-0.69%	73.34%

### STOCK PRICE INDEX WEIGHTED BY FREE FLOAT MARKET CAPITALIZATION ASE20 (2014=1000)

	1067.6	1070.2	0.25%	32.70%
--	--------	--------	-------	--------

### STOCK PRICE INDEX WEIGHTED BY MARKET CAPITALIZATION (1991=1000)

	MONDAY 18/10/2021	WEDNESDAY 20/10/2021	% CHANGE	
			DAY BEFORE	YTD
GENERAL	4026.1	4026.0	0.00%	32.02%
BANKS	6546.8	6565.6	0.29%	21.35%
INSURANCE	1384.5	1385.8	0.09%	5.85%
SERVICES	795.4	796.0	0.08%	13.03%
INDUSTRY	4747.4	4724.9	-0.47%	67.67%

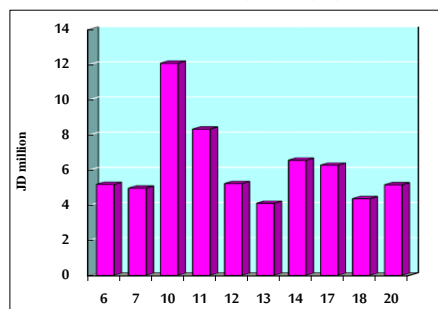
### STOCK PRICE MARKET INDEX WEIGHTED BY FREE FLOAT MARKET CAP. (2012=1000)

	MONDAY 18/10/2021	WEDNESDAY 20/10/2021	% CHANGE	
			DAY BEFORE	YTD
FIRST MARKET	1134.8	1137.0	0.20%	30.94%
SECOND MARKET	943.5	944.7	0.13%	8.41%

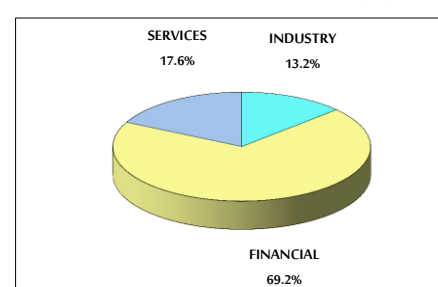
### MARKET CAPITALIZATION (JD)

	15,564,203,637	15,564,245,010	0.00%	20.58%
--	----------------	----------------	-------	--------

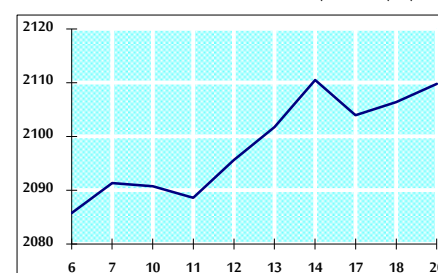
### VALUE TRADED FROM 6/10 TO 20/10/2021



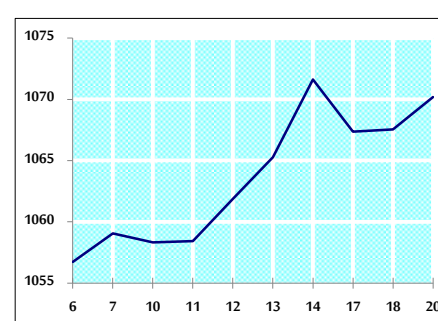
### VALUE TRADED BY SECTOR WEDNESDAY 20/10/2021



### GENERAL FREE FLOAT PRICE INDEX FROM 6/10 TO 20/10/2021



### ASE20 FREE FLOAT PRICE INDEX FROM 6/10 TO 20/10/2021



### GENERAL PRICE INDEX FROM 6/10 TO 20/10/2021

