

Daily Summary for Amman Stock Exchange

VALUE TRADED (JD)

	2020	2021	NET CHANGE	CHANGE (%)
Daily	3,614,433	5,643,661	2,029,228	56.14%
Cumulative (3/10-25/10)	62,956,910	98,723,624	35,766,714	56.81%
Cumulative (3/1-25/10)	774,017,818	1,647,176,078	873,158,260	112.81%

NO. OF SHARES TRADED

	2020	2021	NET CHANGE	CHANGE (%)
Daily	4,199,247	4,263,280	64,033	1.52%
Cumulative (3/10-25/10)	77,230,569	75,051,663	-2,178,906	-2.82%
Cumulative (3/1-25/10)	854,657,155	1,286,249,573	431,592,418	50.50%

NO. OF TRANSACTIONS

	2020	2021	NET CHANGE	CHANGE (%)
Daily	1,678	3,096	1,418	84.51%
Cumulative (3/10-25/10)	27,860	51,039	23,179	83.20%
Cumulative (3/1-25/10)	327,463	662,648	335,185	102.36%

SOME FINANCIAL RATIOS FOR THE ASE (25/10/2021)

SECTOR	P/E	P/BV	DIVIDEND YIELD (%)	TURNOVER (%)
FINANCIAL	34.991	0.868	3.274	0.059
SERVICES	-	1.268	2.254	0.087
INDUSTRY	28.444	2.132	2.627	0.083
OVERALL	37.574	1.121	2.963	0.068

STOCK PRICE INDEX WEIGHTED BY FREE FLOAT MARKET CAPITALIZATION (1999=1000)

	SUNDAY 24/10/2021	MONDAY 25/10/2021	% CHANGE	
			DAY BEFORE	YTD
GENERAL	2111.4	2119.0	0.36%	27.87%
FINANCIAL	2574.3	2580.9	0.26%	18.84%
SERVICES	1343.6	1344.6	0.07%	17.12%
INDUSTRY	3657.5	3697.3	1.09%	74.43%

STOCK PRICE INDEX WEIGHTED BY FREE FLOAT MARKET CAPITALIZATION ASE20 (2014=1000)

	1070.6	1076.1	0.51%	33.43%
--	--------	--------	-------	--------

STOCK PRICE INDEX WEIGHTED BY MARKET CAPITALIZATION (1991=1000)

	SUNDAY 24/10/2021	MONDAY 25/10/2021	% CHANGE	
			DAY BEFORE	YTD
GENERAL	4014.1	4032.6	0.46%	32.23%
BANKS	6565.4	6565.4	0.00%	21.34%
INSURANCE	1388.1	1390.3	0.16%	6.20%
SERVICES	794.0	797.0	0.38%	13.18%
INDUSTRY	4688.1	4745.1	1.22%	68.38%

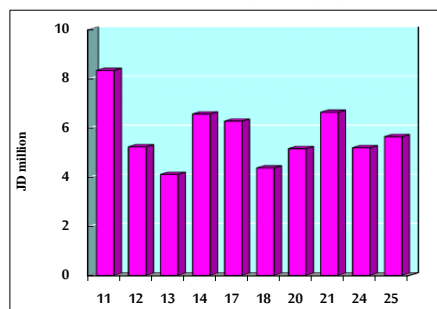
STOCK PRICE MARKET INDEX WEIGHTED BY FREE FLOAT MARKET CAP. (2012=1000)

	SUNDAY 24/10/2021	MONDAY 25/10/2021	% CHANGE	
			DAY BEFORE	YTD
FIRST MARKET	1138.6	1143.8	0.46%	31.72%
SECOND MARKET	941.5	938.3	-0.34%	7.68%

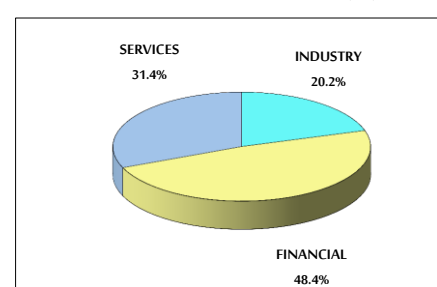
MARKET CAPITALIZATION (JD)

	15,517,842,898	15,586,716,402	0.44%	20.75%
--	----------------	----------------	-------	--------

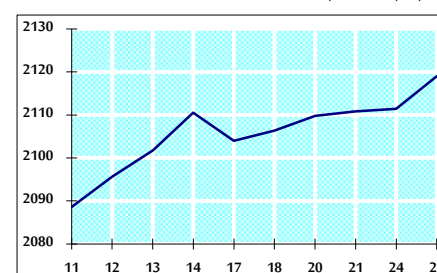
VALUE TRADED FROM 11/10 TO 25/10/2021



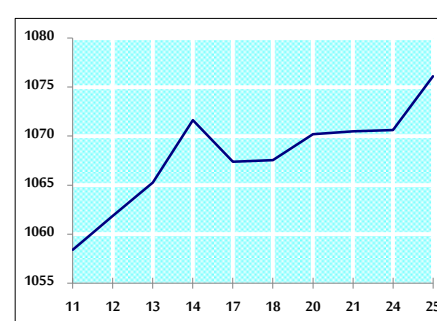
VALUE TRADED BY SECTOR MONDAY 25/10/2021



GENERAL FREE FLOAT PRICE INDEX FROM 11/10 TO 25/10/2021



ASE20 FREE FLOAT PRICE INDEX FROM 11/10 TO 25/10/2021



GENERAL PRICE INDEX FROM 11/10 TO 25/10/2021

