

## Daily Summary for Amman Stock Exchange

### VALUE TRADED (JD)

	2019	2020	NET CHANGE	CHANGE (%)
Daily	4,553,958	3,911,882	-642,076	-14.10%
Cumulative(1/7-1/7)	4,553,958	3,911,882	-642,076	-14.10%
Cumulative(2/1-1/7)	672,619,667	419,521,194	-253,098,473	-37.63%

### NO. OF SHARES TRADED

	2019	2020	NET CHANGE	CHANGE (%)
Daily	5,139,450	4,258,367	-881,083	-17.14%
Cumulative(1/7-1/7)	5,139,450	4,258,367	-881,083	-17.14%
Cumulative(2/1-1/7)	539,394,126	407,585,458	-131,808,668	-24.44%

### NO. OF TRANSACTIONS

	2019	2020	NET CHANGE	CHANGE (%)
Daily	2,395	1,859	-536	-22.38%
Cumulative(1/7-1/7)	2,395	1,859	-536	-22.38%
Cumulative(2/1-1/7)	245,830	164,497	-81,333	-33.09%

### SOME FINANCIAL RATIOS FOR THE ASE (1/7/2020)

SECTOR	P/E	P/BV	DIVIDEND YIELD (%)	TURNOVER (%)
FINANCIAL	9.363	0.759	0.166	0.054
SERVICES	12.621	0.977	4.819	0.063
INDUSTRY	14.882	1.215	3.506	0.120
OVERALL	9.888	0.865	1.749	0.064

### STOCK PRICE INDEX WEIGHTED BY FREE FLOAT MARKET CAPITALIZATION (1999=1000)

	TUESDAY 30/06/2020	WEDNESDAY 01/07/2020	% CHANGE	
			DAY BEFORE	YTD
GENERAL	1603.0	1598.4	-0.29%	-11.94%
FINANCIAL	2116.2	2113.6	-0.12%	-13.73%
SERVICES	1166.2	1158.8	-0.64%	-10.38%
INDUSTRY	1791.1	1785.9	-0.29%	-3.82%

### STOCK PRICE INDEX WEIGHTED BY FREE FLOAT MARKET CAPITALIZATION ASE20 (2014=1000)

	788.2	785.6	-0.33%	-11.82%
--	-------	-------	--------	---------

### STOCK PRICE INDEX WEIGHTED BY MARKET CAPITALIZATION (1991=1000)

	TUESDAY 30/06/2020	WEDNESDAY 01/07/2020	% CHANGE	
			DAY BEFORE	YTD
GENERAL	2935.2	2925.2	-0.34%	-16.75%
BANKS	5622.1	5597.7	-0.44%	-21.11%
INSURANCE	1324.2	1319.9	-0.32%	2.92%
SERVICES	668.9	668.5	-0.06%	-9.13%
INDUSTRY	2307.0	2299.5	-0.33%	-12.00%

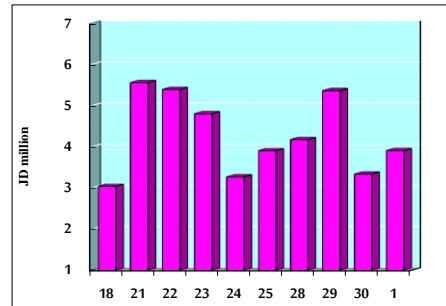
### STOCK PRICE MARKET INDEX WEIGHTED BY FREE FLOAT MARKET CAP. (2012=1000)

	TUESDAY 30/06/2020	WEDNESDAY 01/07/2020	% CHANGE	
			DAY BEFORE	YTD
FIRST MARKET	848.6	845.7	-0.33%	-11.52%
SECOND MARKET	754.9	757.1	0.29%	-9.44%

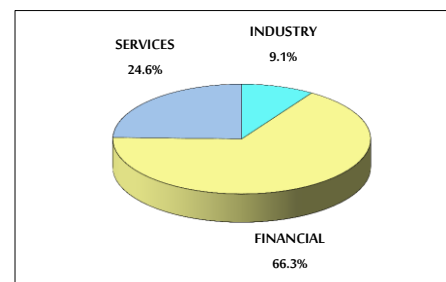
### MARKET CAPITALIZATION (JD)

	12,498,341,689	12,457,743,743	-0.32%	-16.47%
--	----------------	----------------	--------	---------

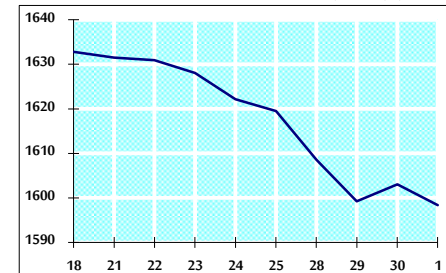
### VALUE TRADED FROM 18/6 TO 1/7/2020



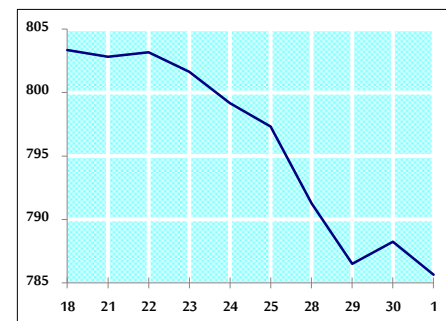
### VALUE TRADED BY SECTOR WEDNESDAY 1/7/2020



### GENERAL FREE FLOAT PRICE INDEX FROM 18/6 TO 1/7/2020



### ASE20 FREE FLOAT PRICE INDEX FROM 18/6 TO 1/7/2020



### GENERAL PRICE INDEX FROM 18/6 TO 1/7/2020

