

Daily Summary for Amman Stock Exchange

VALUE TRADED (JD)

	2019	2020	NET CHANGE	CHANGE (%)
Daily	6,868,158	2,894,256	-3,973,902	-57.86%
Cumulative(1/7-6/7)	22,575,253	13,538,190	-9,037,063	-40.03%
Cumulative(2/1-6/7)	690,640,962	429,147,502	-261,493,460	-37.86%

NO. OF SHARES TRADED

	2019	2020	NET CHANGE	CHANGE (%)
Daily	6,966,820	2,533,466	-4,433,354	-63.64%
Cumulative(1/7-6/7)	23,133,397	13,582,481	-9,550,916	-41.29%
Cumulative(2/1-6/7)	557,388,073	416,909,572	-140,478,501	-25.20%

NO. OF TRANSACTIONS

	2019	2020	NET CHANGE	CHANGE (%)
Daily	3,692	1,617	-2,075	-56.20%
Cumulative(1/7-6/7)	13,198	7,112	-6,086	-46.11%
Cumulative(2/1-6/7)	256,633	169,750	-86,883	-33.85%

SOME FINANCIAL RATIOS FOR THE ASE (6/7/2020)

SECTOR	P/E	P/BV	DIVIDEND YIELD (%)	TURNOVER (%)
FINANCIAL	9.250	0.750	0.168	0.039
SERVICES	12.510	0.971	4.845	0.017
INDUSTRY	14.915	1.218	3.498	0.073
OVERALL	9.808	0.858	1.763	0.038

STOCK PRICE INDEX WEIGHTED BY FREE FLOAT MARKET CAPITALIZATION (1999=1000)

	SUNDAY 05/07/2020	MONDAY 06/07/2020	% CHANGE	
			DAY BEFORE	YTD
GENERAL	1576.3	1583.2	0.44%	-12.78%
FINANCIAL	2076.3	2088.4	0.58%	-14.76%
SERVICES	1148.9	1151.4	0.22%	-10.95%
INDUSTRY	1783.9	1786.9	0.17%	-3.77%

STOCK PRICE INDEX WEIGHTED BY FREE FLOAT MARKET CAPITALIZATION ASE20 (2014=1000)

	773.3	777.5	0.55%	-12.73%
--	-------	-------	-------	---------

STOCK PRICE INDEX WEIGHTED BY MARKET CAPITALIZATION (1991=1000)

	SUNDAY 05/07/2020	MONDAY 06/07/2020	% CHANGE	
			DAY BEFORE	YTD
GENERAL	2882.1	2901.4	0.67%	-17.43%
BANKS	5458.4	5521.0	1.15%	-22.19%
INSURANCE	1314.0	1314.0	0.00%	2.45%
SERVICES	666.0	664.5	-0.23%	-9.69%
INDUSTRY	2297.9	2304.0	0.26%	-11.83%

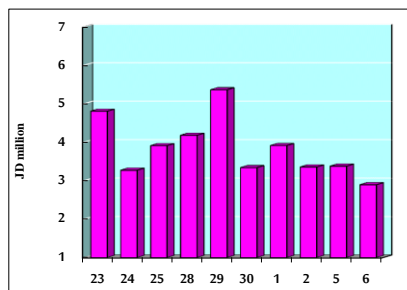
STOCK PRICE MARKET INDEX WEIGHTED BY FREE FLOAT MARKET CAP. (2012=1000)

	SUNDAY 05/07/2020	MONDAY 06/07/2020	% CHANGE	
			DAY BEFORE	YTD
FIRST MARKET	832.3	836.3	0.48%	-12.50%
SECOND MARKET	754.4	753.7	-0.09%	-9.85%

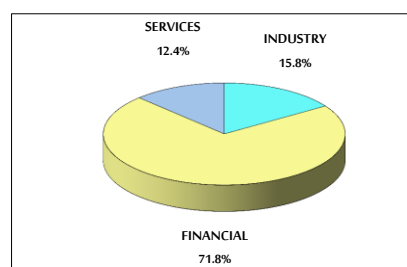
MARKET CAPITALIZATION (JD)

	12,287,846,695	12,364,392,277	0.62%	-17.10%
--	----------------	----------------	-------	---------

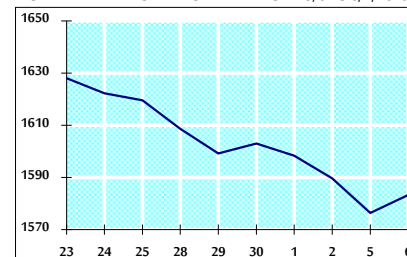
VALUE TRADED FROM 23/6 TO 6/7/2020



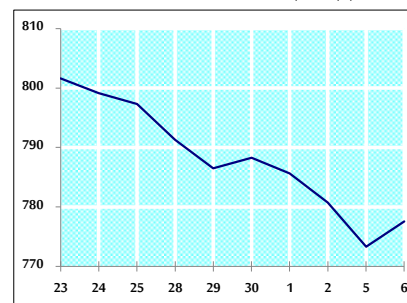
VALUE TRADED BY SECTOR MONDAY 6/7/2020



GENERAL FREE FLOAT PRICE INDEX FROM 23/6 TO 6/7/2020



ASE20 FREE FLOAT PRICE INDEX FROM 23/6 TO 6/7/2020



GENERAL PRICE INDEX FROM 23/6 TO 6/7/2020

