

### Daily Summary for Amman Stock Exchange

VALUE TRADED (JD)

	2019	2020	NET CHANGE	CHANGE (%)
Daily	-	4,504,441	-	-
Cumulative(4/8-31/8)	107,985,144	93,279,300	-14,705,844	-13.62%
Cumulative(2/1-31/8)	925,794,375	610,386,454	-315,407,921	-34.07%

NO. OF SHARES TRADED

	2019	2020	NET CHANGE	CHANGE (%)
Daily	-	5,149,356	-	-
Cumulative(4/8-31/8)	89,077,262	109,990,582	20,913,320	23.48%
Cumulative(2/1-31/8)	777,864,000	629,157,006	-148,706,994	-19.12%

NO. OF TRANSACTIONS

	2019	2020	NET CHANGE	CHANGE (%)
Daily	-	1,950	-	-
Cumulative(4/8-31/8)	35,462	40,732	5,270	14.86%
Cumulative(2/1-31/8)	339,935	247,141	-92,794	-27.30%

SOME FINANCIAL RATIOS FOR THE ASE (31/8/2020)

SECTOR	P/E	P/BV	DIVIDEND YIELD (%)	TURNOVER (%)
FINANCIAL	9.055	0.735	0.171	0.074
SERVICES	11.934	0.985	5.360	0.077
INDUSTRY	15.502	1.265	3.396	0.127
OVERALL	9.755	0.856	1.832	0.081

STOCK PRICE INDEX WEIGHTED BY FREE FLOAT MARKET CAPITALIZATION (1999=1000)

	SUNDAY 30/08/2020	MONDAY 31/08/2020	% CHANGE	
			DAY BEFORE	YTD
GENERAL	1574.4	1573.7	-0.05%	-13.31%
FINANCIAL	2093.6	2090.9	-0.13%	-14.66%
SERVICES	1113.7	1115.2	0.13%	-13.75%
INDUSTRY	1814.9	1817.4	0.13%	-2.13%

STOCK PRICE INDEX WEIGHTED BY FREE FLOAT MARKET CAPITALIZATION ASE20 (2014=1000)

	771.2	771.0	-0.02%	-13.46%
--	-------	-------	--------	---------

STOCK PRICE INDEX WEIGHTED BY MARKET CAPITALIZATION (1991=1000)

	SUNDAY 30/08/2020	MONDAY 31/08/2020	% CHANGE	
			DAY BEFORE	YTD
GENERAL	2879.6	2879.8	0.00%	-18.04%
BANKS	5372.7	5371.4	-0.02%	-24.30%
INSURANCE	1294.6	1291.9	-0.21%	0.73%
SERVICES	662.5	661.3	-0.19%	-10.12%
INDUSTRY	2369.3	2373.8	0.19%	-9.16%

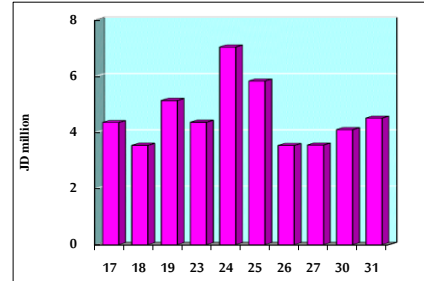
STOCK PRICE MARKET INDEX WEIGHTED BY FREE FLOAT MARKET CAP. (2012=1000)

	SUNDAY 30/08/2020	MONDAY 31/08/2020	% CHANGE	
			DAY BEFORE	YTD
FIRST MARKET	829.0	828.7	-0.04%	-13.31%
SECOND MARKET	779.6	779.4	-0.02%	-6.77%

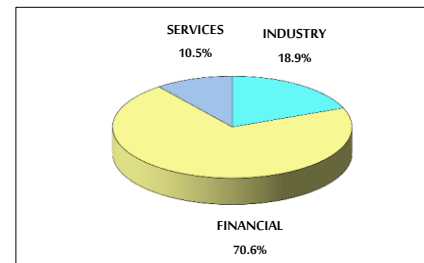
MARKET CAPITALIZATION (JD)

	12,222,580,290	12,224,866,208	0.02%	-18.04%
--	----------------	----------------	-------	---------

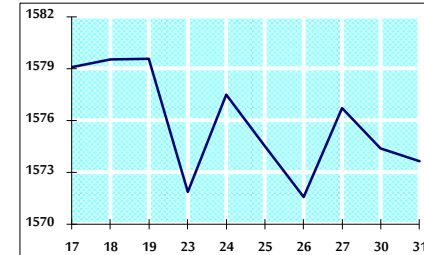
VALUE TRADED FROM 17/7 TO 31/8/2020



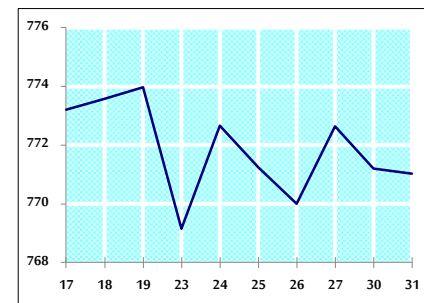
VALUE TRADED BY SECTOR MONDAY 31/8/2020



GENERAL FREE FLOAT PRICE INDEX FROM 17/7 TO 31/8/2020



ASE20 FREE FLOAT PRICE INDEX FROM 17/7 TO 31/8/2020



GENERAL PRICE INDEX FROM 17/7 TO 31/8/2020

