

## Daily Summary for Amman Stock Exchange

### VALUE TRADED (JD)

	2019	2020	NET CHANGE	CHANGE (%)
Daily	5,975,022	3,266,344	-2,708,678	-45.33%
Cumulative(1/9-1/9)	5,975,022	3,266,344	-2,708,678	-45.33%
Cumulative(2/1-1/9)	931,769,397	613,652,798	-318,116,599	-34.14%

### NO. OF SHARES TRADED

	2019	2020	NET CHANGE	CHANGE (%)
Daily	6,832,119	4,964,674	-1,867,445	-27.33%
Cumulative(1/9-1/9)	6,832,119	4,964,674	-1,867,445	-27.33%
Cumulative(2/1-1/9)	784,696,119	634,121,680	-150,574,439	-19.19%

### NO. OF TRANSACTIONS

	2019	2020	NET CHANGE	CHANGE (%)
Daily	2,191	1,991	-200	-9.13%
Cumulative(1/9-1/9)	2,191	1,991	-200	-9.13%
Cumulative(2/1-1/9)	342,126	249,132	-92,994	-27.18%

### SOME FINANCIAL RATIOS FOR THE ASE (1/9/2020)

SECTOR	P/E	P/BV	DIVIDEND YIELD (%)	TURNOVER (%)
FINANCIAL	9.101	0.739	0.171	0.047
SERVICES	11.989	0.989	5.336	0.115
INDUSTRY	15.610	1.274	3.373	0.182
OVERALL	9.811	0.861	1.822	0.078

### STOCK PRICE INDEX WEIGHTED BY FREE FLOAT MARKET CAPITALIZATION (1999=1000)

	MONDAY 31/08/2020	TUESDAY 01/09/2020	% CHANGE	
			DAY BEFORE	YTD
GENERAL	1573.7	1577.8	0.26%	-13.08%
FINANCIAL	2090.9	2094.3	0.16%	-14.52%
SERVICES	1115.2	1119.6	0.39%	-13.41%
INDUSTRY	1817.4	1826.3	0.49%	-1.65%

### STOCK PRICE INDEX WEIGHTED BY FREE FLOAT MARKET CAPITALIZATION ASE20 (2014=1000)

	771.0	772.4	0.18%	-13.30%
--	-------	-------	-------	---------

### STOCK PRICE INDEX WEIGHTED BY MARKET CAPITALIZATION (1991=1000)

	MONDAY 31/08/2020	TUESDAY 01/09/2020	% CHANGE	
			DAY BEFORE	YTD
GENERAL	2879.8	2896.1	0.57%	-17.58%
BANKS	5371.4	5402.1	0.57%	-23.87%
INSURANCE	1291.9	1296.5	0.36%	1.09%
SERVICES	661.3	663.9	0.40%	-9.76%
INDUSTRY	2373.8	2389.4	0.66%	-8.56%

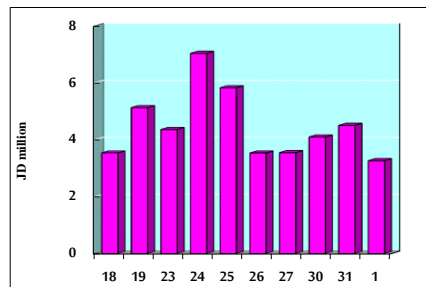
### STOCK PRICE MARKET INDEX WEIGHTED BY FREE FLOAT MARKET CAP. (2012=1000)

	MONDAY 31/08/2020	TUESDAY 01/09/2020	% CHANGE	
			DAY BEFORE	YTD
FIRST MARKET	828.7	830.5	0.23%	-13.11%
SECOND MARKET	779.4	784.9	0.70%	-6.12%

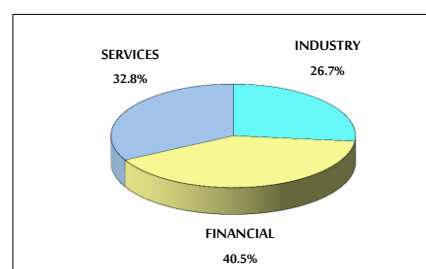
### MARKET CAPITALIZATION (JD)

	12,224,866,208	12,291,946,658	0.55%	-17.59%
--	----------------	----------------	-------	---------

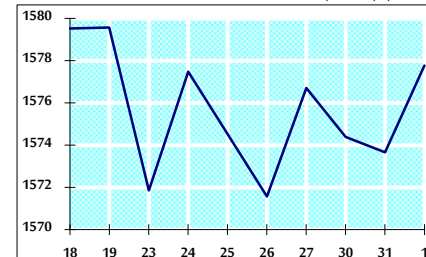
### VALUE TRADED FROM 18/8 TO 1/9/2020



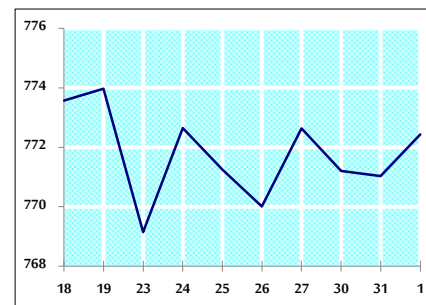
### VALUE TRADED BY SECTOR TUESDAY 1/9/2020



### GENERAL FREE FLOAT PRICE INDEX FROM 18/8 TO 1/9/2020



### ASE20 FREE FLOAT PRICE INDEX FROM 18/8 TO 1/9/2020



### GENERAL PRICE INDEX FROM 18/8 TO 1/9/2020

