

### Daily Summary for Amman Stock Exchange

VALUE TRADED (JD)

	2019	2020	NET CHANGE	CHANGE (%)
Daily	6,592,567	3,578,054	-3,014,513	-45.73%
Cumulative(1/9-2/9)	12,567,589	6,844,398	-5,723,191	-45.54%
Cumulative(2/1-2/9)	938,361,964	617,230,852	-321,131,112	-34.22%

NO. OF SHARES TRADED

	2019	2020	NET CHANGE	CHANGE (%)
Daily	6,212,715	5,476,292	-736,423	-11.85%
Cumulative(1/9-2/9)	13,044,834	10,440,966	-2,603,868	-19.96%
Cumulative(2/1-2/9)	790,908,834	639,597,972	-151,310,862	-19.13%

NO. OF TRANSACTIONS

	2019	2020	NET CHANGE	CHANGE (%)
Daily	2,815	2,169	-646	-22.95%
Cumulative(1/9-2/9)	5,006	4,160	-846	-16.90%
Cumulative(2/1-2/9)	344,941	251,301	-93,640	-27.15%

SOME FINANCIAL RATIOS FOR THE ASE (2/9/2020)

SECTOR	P/E	P/BV	DIVIDEND YIELD (%)	TURNOVER (%)
FINANCIAL	9.091	0.738	0.171	0.053
SERVICES	11.980	0.988	5.340	0.163
INDUSTRY	15.633	1.276	3.368	0.142
OVERALL	9.805	0.860	1.823	0.086

STOCK PRICE INDEX WEIGHTED BY FREE FLOAT MARKET CAPITALIZATION (1999=1000)

	TUESDAY 01/09/2020	WEDNESDAY 02/09/2020	% CHANGE	
			DAY BEFORE	YTD
GENERAL	1577.8	1575.5	-0.14%	-13.20%
FINANCIAL	2094.3	2093.4	-0.04%	-14.55%
SERVICES	1119.6	1114.6	-0.44%	-13.80%
INDUSTRY	1826.3	1827.3	0.05%	-1.60%

STOCK PRICE INDEX WEIGHTED BY FREE FLOAT MARKET CAPITALIZATION ASE20 (2014=1000)

	772.4	771.5	-0.12%	-13.41%
--	-------	-------	--------	---------

STOCK PRICE INDEX WEIGHTED BY MARKET CAPITALIZATION (1991=1000)

	TUESDAY 01/09/2020	WEDNESDAY 02/09/2020	% CHANGE	
			DAY BEFORE	YTD
GENERAL	2896.1	2894.4	-0.06%	-17.63%
BANKS	5402.1	5395.2	-0.13%	-23.96%
INSURANCE	1296.5	1298.1	0.12%	1.21%
SERVICES	663.9	664.6	0.10%	-9.67%
INDUSTRY	2389.4	2388.6	-0.03%	-8.59%

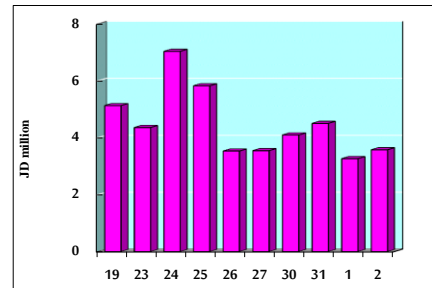
STOCK PRICE MARKET INDEX WEIGHTED BY FREE FLOAT MARKET CAP. (2012=1000)

	TUESDAY 01/09/2020	WEDNESDAY 02/09/2020	% CHANGE	
			DAY BEFORE	YTD
FIRST MARKET	830.5	829.3	-0.14%	-13.24%
SECOND MARKET	784.9	786.3	0.18%	-5.95%

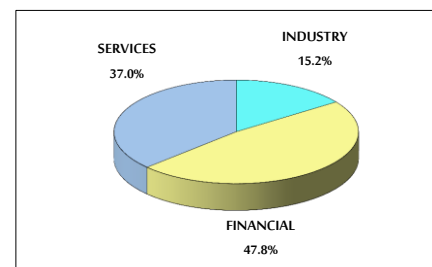
MARKET CAPITALIZATION (JD)

	12,291,946,658	12,287,203,621	-0.04%	-17.62%
--	----------------	----------------	--------	---------

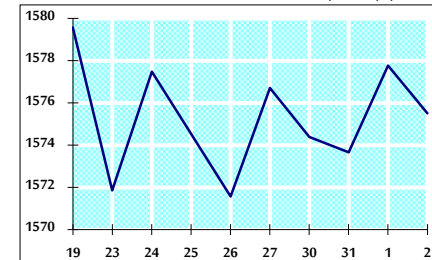
VALUE TRADED FROM 19/8 TO 2/9/2020



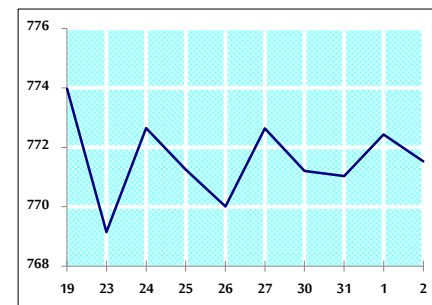
VALUE TRADED BY SECTOR WEDNESDAY 2/9/2020



GENERAL FREE FLOAT PRICE INDEX FROM 19/8 TO 2/9/2020



ASE20 FREE FLOAT PRICE INDEX FROM 19/8 TO 2/9/2020



GENERAL PRICE INDEX FROM 19/8 TO 2/9/2020

