

Daily Summary for Amman Stock Exchange

VALUE TRADED (JD)

	2019	2020	NET CHANGE	CHANGE (%)
Daily	5,816,183	3,295,236	-2,520,947	-43.34%
Cumulative(1/9-6/9)	22,681,972	15,235,476	-7,446,496	-32.83%
Cumulative(2/1-6/9)	948,476,347	625,621,930	-322,854,417	-34.04%

NO. OF SHARES TRADED

	2019	2020	NET CHANGE	CHANGE (%)
Daily	5,996,834	4,706,137	-1,290,697	-21.52%
Cumulative(1/9-6/9)	24,179,488	22,087,309	-2,092,179	-8.65%
Cumulative(2/1-6/9)	802,043,488	651,244,315	-150,799,173	-18.80%

NO. OF TRANSACTIONS

	2019	2020	NET CHANGE	CHANGE (%)
Daily	2,707	2,211	-496	-18.32%
Cumulative(1/9-6/9)	10,071	9,014	-1,057	-10.50%
Cumulative(2/1-6/9)	350,006	256,155	-93,851	-26.81%

SOME FINANCIAL RATIOS FOR THE ASE (6/9/2020)

SECTOR	P/E	P/BV	DIVIDEND YIELD (%)	TURNOVER (%)
FINANCIAL	9.115	0.740	0.170	0.050
SERVICES	12.028	0.992	5.319	0.109
INDUSTRY	15.703	1.282	3.353	0.144
OVERALL	9.834	0.863	1.818	0.074

STOCK PRICE INDEX WEIGHTED BY FREE FLOAT MARKET CAPITALIZATION (1999=1000)

	THURSDAY 03/09/2020	SUNDAY 06/09/2020	% CHANGE	
			DAY BEFORE	YTD
GENERAL	1581.6	1581.8	0.01%	-12.86%
FINANCIAL	2101.5	2102.9	0.06%	-14.17%
SERVICES	1119.4	1119.4	0.00%	-13.43%
INDUSTRY	1832.4	1834.5	0.11%	-1.21%

STOCK PRICE INDEX WEIGHTED BY FREE FLOAT MARKET CAPITALIZATION ASE20 (2014=1000)

	773.6	773.2	-0.06%	-13.22%
--	-------	-------	--------	---------

STOCK PRICE INDEX WEIGHTED BY MARKET CAPITALIZATION (1991=1000)

	THURSDAY 03/09/2020	SUNDAY 06/09/2020	% CHANGE	
			DAY BEFORE	YTD
GENERAL	2910.6	2903.0	-0.26%	-17.38%
BANKS	5432.6	5401.4	-0.57%	-23.88%
INSURANCE	1299.4	1301.6	0.16%	1.49%
SERVICES	667.6	669.7	0.32%	-8.97%
INDUSTRY	2397.6	2397.9	0.01%	-8.24%

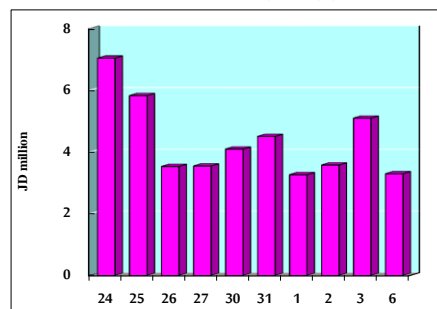
STOCK PRICE MARKET INDEX WEIGHTED BY FREE FLOAT MARKET CAP. (2012=1000)

	THURSDAY 03/09/2020	SUNDAY 06/09/2020	% CHANGE	
			DAY BEFORE	YTD
FIRST MARKET	831.7	831.2	-0.05%	-13.04%
SECOND MARKET	796.3	805.0	1.10%	-3.71%

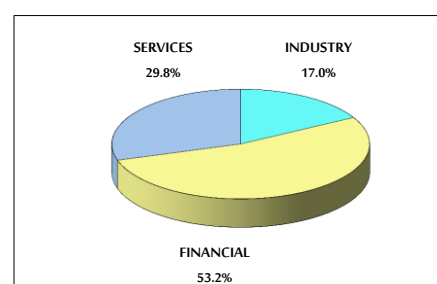
MARKET CAPITALIZATION (JD)

	12,353,540,589	12,327,552,327	-0.21%	-17.35%
--	----------------	----------------	--------	---------

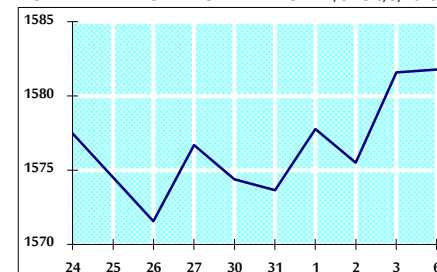
VALUE TRADED FROM 24/8 TO 6/9/2020



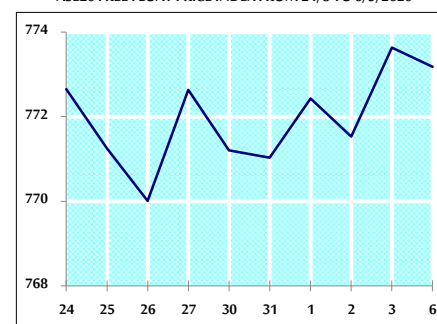
VALUE TRADED BY SECTOR SUNDAY 6/9/2020



GENERAL FREE FLOAT PRICE INDEX FROM 24/8 TO 6/9/2020



ASE20 FREE FLOAT PRICE INDEX FROM 24/8 TO 6/9/2020



GENERAL PRICE INDEX FROM 24/8 TO 6/9/2020

